

CURVE COUNTING ON ABELIAN SURFACES AND THREEFOLDS

JIM BRYAN, GEORG OBERDIECK, RAHUL PANDHARIPANDE,
AND QIZHENG YIN

ABSTRACT. We study the enumerative geometry of algebraic curves on abelian surfaces and threefolds. In the abelian surface case, the theory is parallel to the well-developed study of the reduced Gromov-Witten theory of $K3$ surfaces. We prove complete results in all genera for primitive classes. The generating series are quasi-modular forms of pure weight. Conjectures for imprimitive classes are presented. In genus 2, the counts in all classes are proven. Special counts match the Euler characteristic calculations of the moduli spaces of stable pairs on abelian surfaces by Göttsche-Shende. A formula for hyperelliptic curve counting in terms of Jacobi forms is proven (modulo a transversality statement).

For abelian threefolds, complete conjectures in terms of Jacobi forms for the generating series of curve counts in primitive classes are presented. The base cases make connections to classical lattice counts of Debarre, Göttsche, and Lange-Sernesi. Further evidence is provided by Donaldson-Thomas partition function computations for abelian threefolds. A multiple cover structure is presented. The abelian threefold conjectures open a new direction in the subject.

CONTENTS

0. Introduction	2
1. Abelian varieties	15
Part I. Abelian surfaces	24
2. The genus 2 case	24
3. Primitive classes	28
4. Quasi-modular forms	38
5. Hyperelliptic curves	54
Part II. Abelian threefolds	64
6. Donaldson-Thomas theory	64
7. Gromov-Witten theory	78
References	88

Date: November 2015.

0. INTRODUCTION

0.1. **Vanishings.** Let A be a complex abelian variety of dimension d . The Gromov-Witten invariants of A in genus g and class $\beta \in H_2(A, \mathbb{Z})$ are defined by integration against the virtual class of the moduli space of stable maps $\overline{M}_{g,n}(A, \beta)$,

$$\left\langle \tau_{a_1}(\gamma_1) \cdots \tau_{a_n}(\gamma_n) \right\rangle_{g,\beta}^A = \int_{[\overline{M}_{g,n}(A,\beta)]^{\text{vir}}} \psi_1^{a_1} \text{ev}_1^*(\gamma_1) \cdots \psi_n^{a_n} \text{ev}_n^*(\gamma_n),$$

see [48] for an introduction.¹ However, for abelian varieties of dimension $d \geq 2$, the Gromov-Witten invariants often vanish for two independent reasons. Fortunately, both can be controlled. The result is a meaningful and non-trivial enumerative geometry of curves in A .

The first source of vanishing is the obstruction theory of stable maps. For dimensions $d \geq 2$, the cohomology

$$H^{2,0}(A, \mathbb{C}) = H^0(A, \Omega_A^2)$$

does not vanish and yields a trivial quotient of the obstruction sheaf. As a consequence, the virtual class vanishes [28] for non-zero classes β .

An alternative view of the first vanishing can be obtained by deformation invariance. A homology class $\beta \in H_2(A, \mathbb{Z})$ is a *curve class* if β is represented by an algebraic curve on A . The Gromov-Witten invariants vanish if β is *not* a curve class since then the moduli space $\overline{M}_{g,n}(A, \beta)$ is empty. After generic deformation of A , every non-zero curve class β acquires a part of $H^{2,0}(A, \mathbb{C})^\vee$ and is no longer the class of an algebraic curve. By deformation invariance, the Gromov-Witten invariants of A then necessarily vanish for all non-zero β .

Second, an independent source of vanishing arises from the action of the abelian variety A on the moduli space $\overline{M}_{g,n}(A, \beta)$ by translation: most stable maps

$$f : C \rightarrow A$$

appear in d -dimensional families. Integrands which are translation invariant almost always lead to vanishing Gromov-Witten invariants. We must therefore impose a d -dimensional condition on the moduli space which picks out a single or finite number of curves in each translation class.

¹The domain of a *stable map* is always taken here to be connected.

Curve classes on A are equivalent to divisor classes on the dual abelian variety \widehat{A} . Every curve class $\beta \in H_2(A, \mathbb{Z})$ has a type²

$$(d_1, \dots, d_{\dim A}), \quad d_i \geq 0$$

obtained from the standard divisor theory of \widehat{A} . A curve class β is *non-degenerate* if $d_i > 0$ for all i . Otherwise, β is a *degenerate* curve class. The degenerate³ case is studied by reducing the dimension of A .

Various techniques have been developed in recent years to address the first vanishing. The result in the non-degenerate case is a *reduced virtual class* $[\overline{M}_{g,n}(A, \beta)]^{\text{red}}$ with dimension increased by $h^{2,0}(A)$. Integrals against the reduced class are invariant under deformations of A for which β stays algebraic. Up to translation, we expect the family of genus g curves in class β to be of dimension

$$\begin{aligned} & \text{vdim } \overline{M}_g(A, \beta) + h^{2,0}(A) - d \\ (1) \quad & = (d-3)(1-g) + \frac{d(d-1)}{2} - d \\ & = (d-3) \left(\frac{d}{2} + 1 - g \right). \end{aligned}$$

Hence, for abelian varieties of dimension 1, 2, and 3, we expect families (modulo translation) of dimensions $2g-3$, $g-2$, and 0 respectively.

For abelian varieties of dimension $d \geq 4$, the reduced virtual dimension (1) is non-negative only if

$$g \leq \frac{d}{2} + 1 \leq d - 1.$$

In the non-degenerate case, a generic abelian variety A admits no proper abelian subvariety and thus admits *no* map from a curve of genus less than d . Hence, all invariants vanish.

The Gromov-Witten theory of elliptic curves has been completely solved by Okounkov and Pandharipande in [43, 44]. Some special results are known about abelian surfaces [8, 13, 21, 53]. We put forth here several results and conjectures concerning the complete Gromov-Witten theory of abelian surfaces and threefolds.

²If $A = E_1 \times \dots \times E_d$, the product of elliptic curves E_i , the class $\beta = \sum_i d_i [E_i]$ has type $(d_1, \dots, d_{\dim A})$. See Section 1.2 for a full discussion.

³A detailed discussion of the degenerate case is given in Section 1.5. We focus in the Introduction on the non-degenerate case.

0.2. Abelian surfaces.

0.2.1. *Basic curve counting.* Let A be an abelian surface and let

$$\beta \in H_2(A, \mathbb{Z})$$

be a curve class of type (d_1, d_2) with $d_1, d_2 > 0$. The moduli space

$$\overline{M}_{g,n}(A, \beta)^{\text{FLS}} \subset \overline{M}_{g,n}(A, \beta)$$

is the closed substack of $\overline{M}_{g,n}(A, \beta)$ parameterizing maps with image in a fixed linear system (FLS) on A . Given a curve C in class β , the FLS condition naturally picks out $(d_1 d_2)^2$ elements in the translation class of C . The FLS moduli space carries a reduced virtual fundamental class [31, 39, 55],

$$[\overline{M}_g(A, \beta)^{\text{FLS}}]^{\text{red}},$$

of virtual dimension $g - 2$.

Define λ_k to be the Chern class

$$\lambda_k = c_k(\mathbb{E})$$

of the Hodge bundle $\mathbb{E} \rightarrow \overline{M}_{g,n}(A, \beta)$ with fiber $H^0(C, \omega_C)$ over the moduli point

$$[f : C \rightarrow A] \in \overline{M}_{g,n}(A, \beta).$$

There are no genus 0 or 1 curves on a general abelian surface A . The most basic genus $g \geq 2$ Gromov-Witten invariants of A are

$$(2) \quad \mathbf{N}_{g,\beta}^{\text{FLS}} = \int_{[\overline{M}_g(A,\beta)^{\text{FLS}}]^{\text{red}}} (-1)^{g-2} \lambda_{g-2}.$$

The integrand $(-1)^{g-2} \lambda_{g-2}$ corresponds to the natural deformation theory of curves in A when considered inside a Calabi-Yau threefold. The invariants (2) are therefore precisely the analogs of the genus $g - 2$ Gromov-Witten invariants of $K3$ surface which appear in the Katz-Klemm-Vafa formula, see [39, 40, 47].

By deformation invariance, $\mathbf{N}_{g,\beta}^{\text{FLS}}$ depends only on the type (d_1, d_2) of β . We write

$$\mathbf{N}_{g,\beta}^{\text{FLS}} = \mathbf{N}_{g,(d_1,d_2)}^{\text{FLS}}.$$

We have the following fully explicit conjecture for these counts.

Conjecture A. *For all $g \geq 2$ and for all $d_1, d_2 > 0$,*

$$\mathbf{N}_{g,(d_1,d_2)}^{\text{FLS}} = (d_1 d_2)^2 \frac{2(-1)^{g-2}}{(2g-2)!} \sum_{k \mid \gcd(d_1,d_2)} \sum_{m \mid \frac{d_1 d_2}{k^2}} k^{2g-1} m^{2g-3}.$$

The right hand side incorporates a multiple cover rule which expresses the invariants in imprimitive classes in terms of primitive invariants.⁴ The multiple cover structure is discussed in Section 2.3.

Theorem 1. *Conjecture A is true in the following cases:*

- (i) for all g in case β is primitive,
- (ii) for all β in case $g = 2$.

For part (i) concerning primitive β , our method relies on a degeneration formula for Gromov-Witten invariants of abelian surfaces and calculations in [40]. Via a version of the Gromov-Witten/Pairs correspondence [46], the primitive case also yields an independent proof of the Euler characteristic calculations of relative Hilbert schemes of points by Göttsche and Shende [22].

For part (ii) concerning genus 2, the proof is reduced by a method of Debarre [13], Göttsche [21], and Lange-Sernesi [33] to a lattice count in abelian groups. Our results reveal a new and surprising multiple cover structure in these counts.

Conjecture A is parallel to the full Katz-Klemm-Vafa conjecture for $K3$ surfaces. Part (i) of Theorem 1 is parallel to the primitive KKV conjecture proven in [40]. Part (ii) is parallel to the full Yau-Zaslow conjecture for rational curves on $K3$ surfaces proven in [29]. While our proof of part (i) involves methods parallel to those appearing in the proof of the primitive KKV conjecture, our proof of part (ii) is completely unrelated to the (much more complicated) geometry used in the proof of the full Yau-Zaslow conjecture.

The full Katz-Klemm-Vafa conjecture is proven in [47]. However, most cases of Conjecture A remain open.

0.2.2. *Point insertions for primitive classes.* Let $\mathbf{p} \in H^4(A, \mathbb{Z})$ be the class of a point. Define the λ -twisted Gromov-Witten invariants with k point insertions by:

$$N_{g,k,(d_1,d_2)}^{\text{FLS}} = \int_{[\overline{M}_{g,k}(A,\beta)^{\text{FLS}}]_{\text{red}}} (-1)^{g-2-k} \lambda_{g-2-k} \prod_{i=1}^k \text{ev}_i^*(\mathbf{p}),$$

⁴The class is primitive if and only if $\gcd(d_1, d_2) = 1$ (or, equivalently, the class can be deformed to type $(1, d)$), see Section 1.2.

where β is a curve class of type (d_1, d_2) . Define the function

$$S(z, \tau) = - \sum_{d \geq 1} \sum_{m|d} \frac{d}{m} (p^m - 2 + p^{-m}) q^d,$$

considered as a formal power series in the variables

$$p = e^{2\pi iz} \quad \text{and} \quad q = e^{2\pi i\tau}.$$

Theorem 2. *After setting $u = 2\pi z$, we have*

$$\sum_{g \geq 2} \sum_{d \geq 1} \mathbf{N}_{g,k,(1,d)}^{\text{FLS}} u^{2g-2} q^d = q \frac{d}{dq} \left(\frac{S(z, \tau)^{k+1}}{k+1} \right).$$

For $k = 0$, by definition

$$\mathbf{N}_{g,0,(1,d)}^{\text{FLS}} = \mathbf{N}_{g,(1,d)}^{\text{FLS}}.$$

Hence, by Theorem 2,

$$\sum_{g \geq 2} \sum_{d \geq 1} \mathbf{N}_{g,(1,d)}^{\text{FLS}} u^{2g-2} q^d = q \frac{d}{dq} S(z, \tau),$$

which is a restatement of the formula of Conjecture A for the classes $(1, d)$. Theorem 2 specializes in the $k = 0$ case to the primitive part of Theorem 1.

0.2.3. *Quasi-modular forms.* Let $\gamma_1, \dots, \gamma_n \in H^*(A, \mathbb{Q})$ be cohomology classes. The primitive descendent potential of A with insertions $\tau_{a_1}(\gamma_1) \dots \tau_{a_n}(\gamma_n)$ is defined⁵ by

$$\mathbf{F}_g^A(\tau_{a_1}(\gamma_1) \dots \tau_{a_n}(\gamma_n)) = \sum_{d \geq 0} \left\langle \tau_{a_1}(\gamma_1) \dots \tau_{a_n}(\gamma_n) \right\rangle_{g,(1,d)}^{A, \text{red}} q^d,$$

where the coefficients on the right hand side denote the reduced invariants of A ,

$$\left\langle \tau_{a_1}(\gamma_1) \dots \tau_{a_n}(\gamma_n) \right\rangle_{g,\beta}^{A, \text{red}} = \int_{[\overline{M}_{g,n}(A,\beta)]^{\text{red}}} \prod_{i=1}^n \text{ev}_i^*(\gamma_i) \psi_i^{a_i}.$$

The ring QMod of holomorphic quasi-modular forms (of level 1) is the free polynomial algebra in the Eisenstein⁶ series $E_2(\tau)$, $E_4(\tau)$ and $E_6(\tau)$,

$$\text{QMod} = \mathbb{Q}[E_2, E_4, E_6].$$

⁵Unlike in the FLS setting, the degenerate type $(1, 0)$ is included here.

⁶The Eisenstein series are defined by

$$E_{2k}(\tau) = 1 - \frac{4k}{B_{2k}} \sum_{m|d} m^{2k-1} q^d$$

where B_{2k} is the Bernoulli number.

The ring QMod carries a grading by weight,

$$\text{QMod} = \bigoplus_{k \geq 0} \text{QMod}_{2k},$$

where E_{2k} has weight $2k$. Let

$$\text{QMod}_{\leq 2k} \subset \text{QMod}$$

be the linear subspace of quasi-modular forms of weight $\leq 2k$.

The series vanish in $g = 0$. For $g \geq 1$ and arbitrary insertions, we have the following result.

Theorem 3. *The series $F_g^A(\tau_{a_1}(\gamma_1) \dots \tau_{a_n}(\gamma_n))$ is the Fourier expansion in $q = e^{2\pi i\tau}$ of a quasi-modular form of weight $\leq 2(g-2) + 2n$,*

$$F_g^A(\tau_{a_1}(\gamma_1) \dots \tau_{a_n}(\gamma_n)) \in \text{QMod}_{\leq 2(g-2)+2n}.$$

A sharper formulation of Theorem 3 specifying the weight appears in Theorem 8 of Section 4.

0.2.4. *Hyperelliptic curves.* A nonsingular curve C of genus $g \geq 2$ is *hyperelliptic* if C admits a degree 2 map to \mathbb{P}^1 ,

$$C \rightarrow \mathbb{P}^1.$$

A stable curve C is *hyperelliptic* if $[C] \in \overline{M}_g$ is in the closure of the locus of nonsingular hyperelliptic curves.⁷ An *irreducible hyperelliptic curve* of genus g on an abelian surface A ,

$$C \subset A,$$

is the image of a stable map

$$f : \widehat{C} \rightarrow C \subset A$$

satisfying the following two conditions:

- \widehat{C} is an irreducible stable hyperelliptic curve of genus g ,
- $f : \widehat{C} \rightarrow C$ is birational.

By [49], for any abelian surface A and curve class β , the number of irreducible hyperelliptic curves of genus g in a fixed linear system of class β is *finite*.⁸ We write $\mathbf{h}_{g,\beta}^{A,\text{FLS}}$ for this finite count. Unlike all other invariants considered in the paper, $\mathbf{h}_{g,\beta}^{A,\text{FLS}}$ is *defined* by classical counting.

⁷The closure can be described precisely via the theory of admissible covers [26].

⁸On the other hand, generic abelian varieties of dimension ≥ 3 contain *no* hyperelliptic curve at all, see [49].

Since every genus 2 curve is hyperelliptic, for generic A and β of type $(1, d)$ we have

$$h_{2,\beta}^{A,\text{FLS}} = d^2 \sum_{m|d} m$$

by the genus 2 part of Theorem 1. The following result calculates the genus 3 hyperelliptic counts in generic primitive classes.

Proposition 1. *For a generic abelian surface A with a curve class β of type $(1, d)$,*

$$h_{3,\beta}^{A,\text{FLS}} = d^2 \sum_{m|d} \frac{m(3m^2 + 1 - 4d)}{4}.$$

Let \mathcal{H}_g be the stack fundamental class of the closure of nonsingular hyperelliptic curves inside \overline{M}_g . By [17], \mathcal{H}_g is a tautological⁹ class of codimension $g - 2$. While the restriction of \mathcal{H}_g to M_g is a known multiple of λ_{g-2} , a closed formula for \mathcal{H}_g on \overline{M}_g in terms of the standard generators of the tautological ring is not known.

For β of type (d_1, d_2) , we define a *virtual* count of hyperelliptic curves in class β by

$$(3) \quad H_{g,(d_1,d_2)}^{\text{FLS}} = \int_{[\overline{M}_g(A,\beta)^{\text{FLS}}]_{\text{red}}} \pi^*(\mathcal{H}_g),$$

where π is the forgetful map

$$\pi : \overline{M}_g(A, \beta) \rightarrow \overline{M}_g.$$

Because the integral (3) is deformation invariant, the left side depends only upon g and (d_1, d_2) .

For irreducible curve classes β of type $(1, d)$ on an abelian surface A , consider the following property:

(†) *Every irreducible curve in $\mathbb{P}^1 \times A$ of class*

$$(2, \beta) = 2[\mathbb{P}^1] + \beta \in H_2(\mathbb{P}^1 \times A, \mathbb{Z})$$

is nonsingular.

We will prove property (†) for curves of genus 2 in case A and β are generic. Together with the explicit expression [26] for

$$\mathcal{H}_3 \in H^2(\overline{M}_3, \mathbb{Q}),$$

⁹See [18] for an introduction to tautological classes on the moduli spaces of curves.

we can deduce Proposition 1. The existence of classes β of type $(1, d)$ satisfying (\dagger) is not known for most d , but is expected generically for dimension reasons.

Define the Jacobi theta function [11]

$$(4) \quad K(z, \tau) = \frac{i \vartheta_1(z, \tau)}{\eta(\tau)^3} = iu \exp \left(\sum_{k \geq 1} \frac{(-1)^k B_{2k}}{2k(2k)!} E_{2k}(\tau) u^{2k} \right),$$

where $u = 2\pi z$.

Theorem 4. *Let β be an irreducible class of type $(1, d)$ on an abelian surface A satisfying (\dagger) . Then we have:*

$$(i) \quad \sum_{g \geq 2} \mathbf{h}_{g,\beta}^{A,\text{FLS}} (2 \sin(u/2))^{2g+2} = \sum_{g \geq 2} \mathbf{H}_{g,(1,d)}^{\text{FLS}} u^{2g+2}.$$

(ii) *After the change of variables $u = 2\pi z$ and $q = e^{2\pi i \tau}$,*

$$\sum_{g \geq 2} \mathbf{H}_{g,(1,d)}^{\text{FLS}} u^{2g+2} = \text{Coeff}_{q^d} \left[\left(q \frac{d}{dq} \right)^2 \frac{K(z, \tau)^4}{4} \right],$$

where Coeff_{q^d} denotes the coefficient of q^d .

Enumerative results on hyperelliptic curves via Gromov-Witten theory were first obtained for \mathbb{P}^2 by T. Graber [23] using the Hilbert scheme of points $\text{Hilb}^2(\mathbb{P}^2)$. The hyperelliptic curve counts on abelian surfaces were first studied by S. Rose [53] using the orbifold Gromov-Witten theory of $\text{Sym}^2(A)$ and the geometry of the Kummer. Rose derives his results from the crepant resolution conjecture (CRC) [6, 54] and certain geometric genericity assumptions. While our approach is similar, the closed formula (ii) for $\mathbf{H}_{g,(1,d)}^{\text{FLS}}$ via the theta function $K(z, \tau)$ is new.

Proposition 1 for $\mathbf{h}_{3,\beta}^{A,\text{FLS}}$ and the formula of Theorem 4 for $\mathbf{h}_{g,\beta}^{A,\text{FLS}}$ in higher genus (obtained by combining parts (i) and (ii)) do *not* match Rose's results. The errors in Rose's genus 3 counts can be repaired to agree with Proposition 1. We hope the CRC approach will be able to arrive exactly at the formula of Theorem 4 for $\mathbf{h}_{g,\beta}^{A,\text{FLS}}$.

The values of $\mathbf{h}_{g,\beta}^{A,\text{FLS}}$ in low genus and degree are presented in Table 1 below. The distribution of the non-zero values in Table 1 matches precisely the results of Knutsen, Lelli-Chiesa, and Mongardi in [30, Theorem 1.6]: $\mathbf{h}_{g,\beta}^{A,\text{FLS}}$ is non-zero if and only if

$$(5) \quad (g-1) + \left\lfloor \frac{g-1}{4} \right\rfloor \left((g-1) - 2 \left\lfloor \frac{g-1}{4} \right\rfloor - 2 \right) \leq d.$$

$g \backslash d$	1	2	3	4	5	6	7	8	9	10
2	1	12	36	112	150	432	392	960	1053	1800
3	0	6	90	456	1650	4320	9996	20640	36774	67500
4	0	0	9	192	1425	6732	23814	68352	173907	387900
5	0	0	0	4	150	1656	10486	48240	174474	539200
6	0	0	0	0	0	36	735	6720	41310	191400
7	0	0	0	0	0	0	0	96	1620	14700
8	0	0	0	0	0	0	0	0	0	100

TABLE 1. The first values for the counts $h_{g,\beta}^{A,\text{FLS}}$ of hyperelliptic curves of genus g and type $(1, d)$ in a FLS of a generic abelian surface A as predicted by Theorem 4.

0.3. Abelian threefolds.

0.3.1. *Donaldson-Thomas theory.* Let X be an abelian threefold and let

$$\beta \in H_2(X, \mathbb{Z})$$

be a curve class. The Hilbert scheme of curves

$$\text{Hilb}^n(X, \beta) = \{Z \subset X \mid [Z] = \beta, \chi(\mathcal{O}_Z) = n\}$$

parameterizes 1 dimensional subschemes of class β with holomorphic Euler characteristic n . The group X acts on $\text{Hilb}^n(X, \beta)$ by translation.

If $n \neq 0$, no assumption on β is made. If $n = 0$, we assume that β is not of type $(d, 0, 0)$ up to permutation. Then, the action of X has finite stabilizers, and the stack quotient

$$\text{Hilb}^n(X, \beta)/X$$

is a Deligne-Mumford stack.

We consider here two numerical invariants of $\text{Hilb}^n(X, \beta)/X$, the topological Euler characteristic

$$\widehat{\text{DT}}_{n,\beta}^X = e(\text{Hilb}^n(X, \beta)/X),$$

and the *reduced Donaldson-Thomas invariant* of X defined as the Behrend function weighted Euler characteristic

$$\begin{aligned} \text{DT}_{n,\beta}^X &= e(\text{Hilb}^n(X, \beta)/X, \nu) \\ &= \sum_{k \in \mathbb{Z}} k \cdot e(\nu^{-1}(k)). \end{aligned}$$

While the Behrend function

$$\nu : \text{Hilb}^n(X, \beta)/X \rightarrow \mathbb{Z}$$

is integer valued, the topological Euler characteristic e is taken in the orbifold sense and so may be a rational number. Hence,

$$\text{DT}_{n,\beta}^X \in \mathbb{Q}, \quad \widehat{\text{DT}}_{n,\beta}^X \in \mathbb{Q}.$$

By results of M. Gulbrandsen [25], the numbers $\text{DT}_{n,\beta}^X$ are invariant under deformations of the pair (X, β) if $n \neq 0$. For $n = 0$, Gulbrandsen's method breaks down, but deformation invariance is still expected. The numbers $\widehat{\text{DT}}_{n,\beta}^X$ are not expected to be deformation invariant.

By deformation equivalence, we may compute $\text{DT}_{n,\beta}^X$ after specialization to the product geometry

$$X = A \times E.$$

We compute $\widehat{\text{DT}}_{n,\beta}^X$ for the product geometry, and we conjecture a simple relationship there between $\text{DT}_{n,\beta}^X$ and $\widehat{\text{DT}}_{n,\beta}^X$. We then obtain a formula for the invariants $\text{DT}_{n,\beta}^X$.

Let A be a generic abelian surface with a curve class $\beta_{d'}$ of type $(1, d' > 0)$, and let E be a generic elliptic curve. Consider the abelian threefold

$$X = A \times E.$$

For every integer $d \geq 0$, the curve class

$$(\beta_{d'}, d) = \beta_{d'} + d[E] \in H_2(X, \mathbb{Z})$$

is of type $(1, d', d)$.

The following result determines the invariants $\widehat{\text{DT}}_{n,(\beta_{d'},d)}^X$ in the first two nontrivial cases $d' = 1$ and $d' = 2$.

Let K be the theta function which already appeared in Section 0.2.4,

$$K(p, q) = (p^{1/2} - p^{-1/2}) \prod_{m \geq 1} \frac{(1 - pq^m)(1 - p^{-1}q^m)}{(1 - q^m)^2}.$$

Theorem 5. *For the topological Euler characteristic theory, we have*

$$\begin{aligned}
\text{(i)} \quad & \sum_{d \geq 0} \sum_{n \in \mathbb{Z}} \widehat{\text{DT}}_{n,(\beta_1,d)}^X p^n q^d = K(p, q)^2, \\
\text{(ii)} \quad & \sum_{d \geq 0} \sum_{n \in \mathbb{Z}} \widehat{\text{DT}}_{n,(\beta_2,d)}^X p^n q^d = K(p, q)^4 \cdot \left(\frac{1}{2} + \frac{3p}{(1-p)^2} \right. \\
& \quad \left. + \sum_{d \geq 1} \sum_{k|d} k \cdot (3(p^k + p^{-k})q^d + 12q^{2d}) \right).
\end{aligned}$$

Assuming Conjecture D in Section 6.6 below, we obtain the following result for the invariants $\text{DT}_{n,(\beta_{d'},d)}^X$ in the cases $d' = 1$ and $d' = 2$.

Consider the Weierstrass elliptic function

$$\wp(p, q) = \frac{1}{12} + \frac{p}{(1-p)^2} + \sum_{d \geq 1} \sum_{m|d} m(p^m - 2 + p^{-m})q^d$$

expanded in the region $|p| < 1$.

Corollary* 5. *Assume Conjecture D holds. Then we have*

$$\begin{aligned}
\text{(i)} \quad & \sum_{d \geq 0} \sum_{n \in \mathbb{Z}} \text{DT}_{n,(\beta_1,d)}^X (-p)^n q^d = -K(p, q)^2, \\
\text{(ii)} \quad & \sum_{d \geq 0} \sum_{n \in \mathbb{Z}} \text{DT}_{n,(\beta_2,d)}^X (-p)^n q^d = -\frac{3}{2}K(p, q)^4 \wp(p, q) - \frac{3}{8}K(p^2, q^2)^2.
\end{aligned}$$

Theorem 5 concerns the Hilbert schemes of curves on X . The Euler characteristics associated to the Hilbert scheme of points of X (via the generalized Kummer construction) have been calculated recently by J. Shen [56] – proving conjectures of Gulbrandsen [25].

0.3.2. Gromov-Witten theory. Let X be an abelian threefold, and let β be a curve class of type (d_1, d_2, d_3) with $d_1, d_2 > 0$. We consider curves of genus $g \geq 2$.

The translation action of X on $\overline{M}_g(X, \beta)$ has finite stabilizer. Hence,

$$\overline{M}_g(X, \beta)/X$$

is a Deligne-Mumford stack. In Section 7, we use methods of Kiem and Li [28] to construct a reduced virtual class

$$[\overline{M}_g(X, \beta)/X]^{\text{red}}$$

on $\overline{M}_g(X, \beta)/X$ of dimension 0. We define the *reduced quotient Gromov-Witten invariants of X* by

$$\mathbf{N}_{g,\beta} = \int_{[\overline{M}_g(X,\beta)/X]^{\text{red}}} 1.$$

By construction, $\mathbf{N}_{g,\beta}$ is deformation invariant and hence only depends on g and the type (d_1, d_2, d_3) of β . We write

$$\mathbf{N}_{g,\beta} = \mathbf{N}_{g,(d_1,d_2,d_3)}.$$

The number $\mathbf{N}_{g,\beta}$ is a virtual count of translation classes of genus g curves in X of class β in X . In Section 7, we show that $\mathbf{N}_{g,\beta}$ determines the full reduced descendent Gromov-Witten theory of X in genus g and class β .

The following conjecture relates the Gromov-Witten invariants $\mathbf{N}_{g,\beta}$ to the Donaldson-Thomas invariants $\text{DT}_{n,\beta}^X$ defined above. Define the generating series

$$Z_\beta^{\text{GW}}(u) = \sum_{g \geq 2} \mathbf{N}_{g,\beta} u^{2g-2} \quad \text{and} \quad Z_\beta^{\text{DT}}(y) = \sum_{n \in \mathbb{Z}} \text{DT}_{n,\beta}^X y^n.$$

Conjecture B. *The series $Z_\beta^{\text{DT}}(y)$ is the Laurent expansion of a rational function in y and*

$$Z_\beta^{\text{DT}}(y) = Z_\beta^{\text{GW}}(u).$$

after the variable change $y = -e^{iu}$.

Conjecture B is a Gromov-Witten/Donaldson-Thomas correspondence for reduced theories [37, 42]. In conjunction with part (i) of Corollary* 5 and the expansion (4), Conjecture B determines the invariants $\mathbf{N}_{g,(1,1,d)}$ for all $d \geq 0$ by the formula

$$\begin{aligned} \sum_{d \geq 0} \sum_{g \geq 2} \mathbf{N}_{g,(1,1,d)} u^{2g-2} q^d &= -K^2(z, \tau)|_{y=-e^{2\pi iz}, q=e^{2\pi i\tau}} \\ &= (y + 2 + y^{-1}) \prod_{m \geq 1} \frac{(1 + yq^m)^2 (1 + y^{-1}q^m)^2}{(1 - q^m)^4}. \end{aligned}$$

To capture the invariants $\mathbf{N}_{g,(1,d',d)}$ for higher d' , we conjecture an additional structure governing the counting. Let

$$f_{(d_1,d_2,d_3)}(u) = \sum_{g \geq 2} \mathbf{N}_{g,(d_1,d_2,d_3)} u^{2g-2}.$$

The following multiple cover rule expresses the invariants of type $(1, d', d)$ in terms of those of type $(1, 1, d)$.

Conjecture C. *For all $d', d > 0$,*

$$f_{(1,d',d)}(u) = \sum_{k|\gcd(d',d)} \frac{1}{k} f_{(1,1,\frac{d'd}{k^2})}(ku).$$

Conjecture C matches the counts of genus 3 curves by the lattice method of [13, 21, 33]. The deepest support for Conjecture C is a highly non-trivial match with part (ii) of Corollary* 5.

Taken together, Corollary* 5 and Conjectures B and C determine the invariants $\mathbf{N}_{g,\beta}$ for all primitive¹⁰ classes β . The discussion is parallel to [42, Conjecture A] concerning the virtual enumeration of curves on $K3 \times E$ in classes (β, d) where $\beta \in H_2(K3, \mathbb{Z})$ is primitive. The latter has been computed for $\langle \beta, \beta \rangle \in \{-2, 0\}$ in Donaldson-Thomas theory in [5]. The proof of Theorem 5 in Section 6 closely follows the strategy of [5].

For Theorem 5 and Conjecture B, the Hilbert scheme of curves can be replaced by the moduli space of stable pairs [46]. For technical aspects of the proof of Theorem 5, ideal sheaves are simpler – but there is no fundamental difference in the arguments required here.

0.4. Plan of the paper. In Section 1, we recall several classical facts concerning divisors and curves on abelian varieties. Polarized isogenies, which play a central role in the enumeration of low genus curves, are reviewed. Reduced virtual classes are discussed in Section 1.4. Non-degenerate curves classes are analyzed in Section 1.5.

Part I of the paper (Sections 2-5) concerns the enumeration of curves on abelian surfaces A . In Section 2, the genus 2 part of Theorem 1 is proven. In Section 3, the proofs of Theorem 1 and Theorem 2 for primitive classes are completed. A connection with the Euler characteristic calculations of stable pairs moduli spaces on A by Göttsche and Shende [22] is discussed in Section 3.7. The quasi-modularity of the primitive descendent potentials of A is studied in Section 4 where a refinement of Theorem 3 is proven. A parallel refined quasi-modularity result for the reduced Gromov-Witten theory of $K3$ surfaces is presented in Section 4.6. The enumeration of hyperelliptic curves on A and the proof of Theorem 4 is given in Section 5.

Part II of the paper (Sections 6-7) concerns the enumeration of curves on abelian threefolds X . In Section 6, the topological and

¹⁰The class is primitive if and only if it can be deformed to type $(1, d', d)$, see Section 1.2.

Behrend weighted Euler characteristics of the Hilbert scheme of curves in $A \times E$ are studied. For $d' \in \{1, 2\}$, the topological Euler characteristic theory is calculated and Theorem 5 is proven (except for genus 3 lattice counts which appear in Section 7.3). Conjecture D relating the two theories is presented in Section 6.6. In Section 7, the foundations of the quotient Gromov-Witten theory are discussed and the full descendent theory is expressed in terms of the invariants $\mathbf{N}_{g,(d_1,d_2,d_3)}$. Finally, the relationship between Theorem 5 and Conjectures B and C is studied in Section 7.4.

0.5. Acknowledgements. We thank B. Bakker, L. Göttsche, S. Katz, M. Kool, A. Klemm, A. Knutsen, A. Kresch, J. Li, D. Maulik, M. Raum, S. Rose, J. Schmitt, E. Sernesi, J. Shen, V. Shende, and R. Thomas for discussions about counting invariants of abelian surfaces and threefolds. The results here were first presented at the conference *Motivic invariants related to K3 and abelian geometries* at Humboldt University in February 2015. We thank G. Farkas and the Einstein Stiftung for support in Berlin.

J.B. was partially supported by NSERC Accelerator and Discovery grants. The research here was partially carried out during a visit of J.B. to the Forschungsinstitut für Mathematik at ETH Zürich in November 2014. G.O. was supported by the grant SNF-200021-143274. R.P. was partially supported by SNF-200021-143274, ERC-2012-AdG-320368-MCSK, SwissMap, and the Einstein Stiftung. Q.Y. was supported by the grant ERC-2012-AdG-320368-MCSK.

1. ABELIAN VARIETIES

1.1. Overview. We review here some basic facts about divisor and curve classes on abelian varieties. A standard reference for complex abelian varieties is [4]. A treatment of polarized isogenies is required for the lattice counting in Sections 2 and 7.4. Using results of Kiem-Li [28], we define reduced virtual classes on the moduli spaces of stable maps to abelian varieties. Finally, we show that the (reduced) Gromov-Witten theory of abelian varieties of arbitrary dimensions is determined by the (reduced) theories in dimensions up to 3.

1.2. Curve classes. Let $V = \mathbb{C}^n$. Let $\Lambda \subset V$ be a rank $2n$ lattice for which

$$A = V/\Lambda$$

is an n -dimensional compact complex torus. Let L be a holomorphic line bundle on A . The first Chern class

$$c_1(L) \in H^2(A, \mathbb{Z})$$

induces a Hermitian form

$$H : V \times V \rightarrow \mathbb{C}$$

and an alternating form

$$E = \text{Im } H : \Lambda \times \Lambda \rightarrow \mathbb{Z}.$$

By the elementary divisor theorem, there exists a *symplectic* basis of Λ in which E is given by the matrix

$$\begin{pmatrix} 0 & D \\ -D & 0 \end{pmatrix},$$

where $D = \text{Diag}(d_1, \dots, d_n)$ with integers $d_i \geq 0$ satisfying

$$d_1 \mid d_2 \mid \dots \mid d_n.$$

The tuple (d_1, \dots, d_n) is uniquely determined by L (in fact by $c_1(L)$) and is called the *type* of L .

A *polarization* on A is a first Chern class $c_1(L)$ with positive definite Hermitian form H (in particular $d_i > 0$). The polarization is *principal* if $d_i = 1$ for all i . The moduli space of polarized n -dimensional abelian varieties of a fixed type is irreducible of dimension $n(n+1)/2$.

Let $\beta \in H_2(A, \mathbb{Z})$ be a curve class on A . The class corresponds to

$$\widehat{\beta} = c_1(\widehat{L}) \in H^2(\widehat{A}, \mathbb{Z}),$$

where $\widehat{A} = \text{Pic}^0(A)$ is the dual complex torus of A and \widehat{L} is a line bundle on \widehat{A} . We define the *type* (d_1, \dots, d_n) of β to be the type of \widehat{L} . The class β is primitive if and only if $d_1 = 1$. For abelian surfaces, we may view β as either a curve class or a divisor class: the resulting types are the same.

If β is of type (d_1, \dots, d_n) with $d_i > 0$ for all i , then $\widehat{\beta}$ is a polarization on \widehat{A} . Hence, all curve classes of a fixed type (d_1, \dots, d_n) with $d_i > 0$ for all i are deformation equivalent.

If $d_i = 0$ for some i , then we say that β is of *degenerate* type. Write $k = \max\{i \mid d_i \neq 0\}$. By [4, Theorem 3.3.3], there exists a subtorus $B \subset \widehat{A}$ of dimension $n - k$ with quotient map

$$p : \widehat{A} \rightarrow \bar{A} = \widehat{A}/B,$$

and a polarization

$$\bar{\beta} = c_1(\bar{L}) \in H^2(\bar{A}, \mathbb{Z})$$

of type (d_1, \dots, d_k) , such that $\widehat{\beta} = p^*(\bar{\beta})$. The deformation of β is then governed by the deformation of $\bar{\beta}$. As a result, curve classes of a fixed type $(d_1, \dots, d_k, 0, \dots, 0)$ are also deformation equivalent.

Let A be the product of n elliptic curves $E_1 \times \dots \times E_n$. For integers $a_1, \dots, a_n \geq 0$, consider the curve class

$$\beta = a_1[E_1] + \dots + a_n[E_n] \in H_2(A, \mathbb{Z}).$$

The type (d_1, \dots, d_n) of β is given by the rank and the invariant factors of the abelian group associated to (a_1, \dots, a_n) :

$$\bigoplus_{i=1}^n \mathbb{Z}/a_i \cong \mathbb{Z}^m \oplus \bigoplus_{j=1}^k \mathbb{Z}/d'_j.$$

Here, $k, m \leq n$ and

$$(d_1, \dots, d_n) = (\underbrace{1, \dots, 1}_{n-k-m}, d'_1, \dots, d'_k, \underbrace{0, \dots, 0}_m).$$

Later we shall also say that β is of type (a_1, \dots, a_n) without requiring $a_1|a_2|\dots|a_n$.

Two tuples (a_1, \dots, a_n) and (b_1, \dots, b_n) are deformation equivalent if and only if

$$\bigoplus_{i=1}^n \mathbb{Z}/a_i \cong \bigoplus_{i=1}^n \mathbb{Z}/b_i.$$

The primitivity of β is determined by $\gcd(a_1, \dots, a_n)$.

1.3. Polarized isogenies. The following discussion is based on [13, 21, 33]. Let

$$f : C \rightarrow A$$

be a map from a nonsingular curve of genus g . Suppose the curve class

$$\beta = f_*[C]$$

is of type (d_1, \dots, d_n) with $d_i > 0$ for all i . The map f factors as

$$C \xrightarrow{\mathbf{aj}} J \xrightarrow{\pi} A,$$

where J is the Jacobian of C and \mathbf{aj} is the Abel-Jacobi map, defined up to translation by J . By duality, π corresponds to

$$\widehat{\pi} : \widehat{A} \rightarrow J \quad \text{such that} \quad \widehat{\beta} = \widehat{\pi}^*\theta,$$

where θ is the theta divisor class on J (here we identify J with \widehat{J}). When $g = n$, the map $\widehat{\pi}$ is a *polarized isogeny*.

More generally, consider the isogeny

$$\phi_{\widehat{\beta}} : \widehat{A} \rightarrow \widehat{A} \cong A, \quad x \mapsto t_x^* \widehat{L} \otimes \widehat{L}^{-1},$$

where $\widehat{\beta} = c_1(\widehat{L})$ for some line bundle \widehat{L} and $t_x : \widehat{A} \rightarrow \widehat{A}$ is the translation by x . The finite kernel of $\phi_{\widehat{\beta}}$ admits a non-degenerate multiplicative alternating form

$$\langle \cdot, \cdot \rangle : \text{Ker}(\phi_{\widehat{\beta}}) \times \text{Ker}(\phi_{\widehat{\beta}}) \rightarrow \mathbb{C}^*,$$

called the *commutator pairing*. By [4, Corollary 6.3.5], there is a bijective correspondence between the following two sets:

- polarized isogenies from $(\widehat{A}, \widehat{\beta})$ to principally polarized abelian varieties (B, θ) ,
- maximal totally isotropic subgroups of $\text{Ker}(\phi_{\widehat{\beta}})$.

The cardinality of both sets depends only on the type (d_1, \dots, d_n) of β , and is denoted by

$$\nu(d_1, \dots, d_n).$$

In fact, under a suitable basis of $\widehat{\Lambda}$ we have

$$(6) \quad \text{Ker}(\phi_{\widehat{\beta}}) \cong (\mathbb{Z}/d_1 \times \dots \times \mathbb{Z}/d_n)^2,$$

and in terms of standard generators $e_1, \dots, e_n, f_1, \dots, f_n$ of (6),

$$\langle e_k, f_\ell \rangle = e^{\delta_{k\ell} \frac{2\pi i}{d_k}}.$$

The number $\nu(d_1, \dots, d_n)$ can be computed as follows.

Lemma 1 (Debarre [13]). *We have*

$$(7) \quad \nu(d_1, \dots, d_n) = \sum_{K < \mathbb{Z}/d_1 \times \dots \times \mathbb{Z}/d_n} \# \text{Hom}^{\text{sym}}(K, \widehat{K}),$$

where $\widehat{K} = \text{Hom}(K, \mathbb{C}^*)$ and Hom^{sym} stands for symmetric homomorphisms.

A straightforward analysis yields

$$(8) \quad \nu(1, \dots, 1, d) = \sigma(d) = \sum_{k|d} k.$$

A list of values of $\nu(d_1, \dots, d_n)$ can be found in [33], but some of the entries are incorrect. For example, the number $\nu(2, 4)$ should be 39 and not 51.

The counts of polarized isogenies are closely related to the counts of the lowest genus curves on abelian surfaces and threefolds. Moreover,

this lattice method is also important in counting higher genus curves in class of type $(1, 2, d)$, see Sections 2 and 7.4.

1.4. Reduced virtual classes. Let A be an abelian variety of dimension $n \geq 2$, and let $\beta \in H_2(A, \mathbb{Z})$ be a curve class of type

$$(d_1, \dots, d_k, \underbrace{0, \dots, 0}_m)$$

with $d_i > 0$ for all i . Here, $k > 0$, $m \geq 0$, and $k + m = n$.

By the discussion in Section 1.2, there exists a subtorus $A' \subset A$ of dimension k and a curve class $\beta' \in H_2(A', \mathbb{Z})$ of type (d_1, \dots, d_k) such that β is the push-forward of β' . Write

$$\pi : A \rightarrow A'' = A/A'$$

for the quotient map.

Consider the moduli space of stable maps $\overline{M}_g(A, \beta)$. Using the *co-section localization* method of Kiem-Li [28], we define a (maximally) reduced virtual class

$$[\overline{M}_g(A, \beta)]^{\text{red}}$$

on $\overline{M}_g(A, \beta)$. The case with marked points is done similarly. The result provides a foundation for the reduced Gromov-Witten theory of abelian varieties.

By [28, Section 6], every holomorphic 2-form $\theta \in H^0(A, \Omega_A^2)$ induces a map

$$\sigma_\theta : \text{Ob}_{\overline{M}_g(A, \beta)} \rightarrow \mathcal{O}_{\overline{M}_g(A, \beta)},$$

where $\text{Ob}_{\overline{M}_g(A, \beta)}$ is the obstruction sheaf of $\overline{M}_g(A, \beta)$.

Lemma 2. *The map σ_θ is trivial if*

$$\theta \in \pi^* H^0(A'', \Omega_{A''}^2)$$

and surjective otherwise.

Proof. Let $[f : C \rightarrow A] \in \overline{M}_g(A, \beta)$ be a stable map in class β . After translation, we may assume $\text{Im}(C) \subset A'$.

By [28, Proposition 6.4], the map σ_θ is trivial at $[f]$ if and only if the composition

$$(9) \quad T_{C_{\text{reg}}} \xrightarrow{df} f^* T_A|_{C_{\text{reg}}} \xrightarrow{f^* \hat{\theta}} f^* \Omega_A|_{C_{\text{reg}}}$$

is trivial. Here C_{reg} is the regular locus of C and $\hat{\theta} : T_A \rightarrow \Omega_A$ is the map induced by θ . Since $\text{Im}(C) \subset A'$, it is clear that (9) is trivial if $\theta \in \pi^* H^0(A'', \Omega_{A''}^2)$.

For the surjectivity statement, we identify the tangent space $T_{A,x}$ at $x \in A$ with $T_{A,0_A}$ by translation. Since β' is of type (d_1, \dots, d_k) with $d_i > 0$, the curve $\text{Im}(C)$ generates A' as a group. By [14, Lemma 8.2], there exists an open dense subset $U \subset \text{Im}(C)_{\text{reg}}$, such that $T_{A',0_{A'}}$ is spanned by

$$T_{\text{Im}(C)_{\text{reg}},x} \quad \text{for } x \in U.$$

It follows that for any $\theta \in H^0(A, \Omega_A^2) \setminus \pi^* H^0(A'', \Omega_{A''}^2)$, there exists a point $x \in U$ with (9) non-trivial at x . \square

Hence, by taking a basis of the quotient $H^0(A, \Omega_A^2)/\pi^* H^0(A'', \Omega_{A''}^2)$, we obtain a surjective map

$$\sigma : \text{Ob}_{\overline{M}_g(A,\beta)} \rightarrow \mathcal{O}_{\overline{M}_g(A,\beta)}^{\oplus r(k,m)}$$

with

$$r(k,m) = \binom{k+m}{2} - \binom{m}{2} = \frac{k(k-1)}{2} + km.$$

Then, by the construction of [28], the map σ yields a reduced virtual class $[\overline{M}_g(A,\beta)]^{\text{red}}$ of dimension

$$\text{vdim } \overline{M}_g(A,\beta) + r(k,m) = (k+m-3)(1-g) + \frac{k(k-1)}{2} + km.$$

1.5. Gromov-Witten theory in degenerate curve classes. We now explore the possibilities of obtaining non-trivial reduced Gromov-Witten invariants for A and β . By deformation invariance, the invariants depend only on the type

$$(d_1, \dots, d_k, \underbrace{0, \dots, 0}_m).$$

We may then assume

$$A = A' \times A''$$

with A' generic among abelian varieties carrying a curve class of type (d_1, \dots, d_k) , and A'' a product of m elliptic curves,

$$A'' = E_1 \times \dots \times E_m.$$

By the genericity of A' , there are no stable maps of genus less than $k = \dim A'$ in class β . Hence, all invariants in genus $< k$ vanish.

We list the following four cases according to the number k of non-zero entries in the type of β .

Case $k = 1$. For $g \geq 1$, stable maps $[f : C \rightarrow A] \in \overline{M}_g(A,\beta)$ come in m -dimensional families via the translation action of A'' . On the other

hand, the translation by the elliptic curve A' fixes $\text{Im}(f)$. The expected dimension modulo the translation by A'' is

$$\text{vdim } \overline{M}_g(A, \beta) + r(1, m) - m = (m - 2)(1 - g).$$

Integrals over the reduced class $[\overline{M}_g(A, \beta)]^{\text{red}}$ can be evaluated by eliminating the E -factors. In each step from

$$A' \times E_1 \times \cdots \times E_{i+1} \quad \text{to} \quad A' \times E_1 \times \cdots \times E_i,$$

we find a surjective map $\mathbb{E}^\vee \rightarrow \mathcal{O}$ where \mathbb{E} is the Hodge bundle. We then obtain a copy of the top Chern class of

$$\text{Ker}(\mathbb{E}^\vee \rightarrow \mathcal{O})$$

which is $(-1)^{g-1} \lambda_{g-1}$. This follows from a close analysis of the obstruction sheaf and the definition of the reduced class. In the end, we arrive at integrals over $[\overline{M}_g(A', \beta')]^{\text{vir}}$ with

$$((-1)^{g-1} \lambda_{g-1})^m$$

in the integrand.

For $m = 1$ ($\dim A = 2$), the theory becomes the study of λ_{g-1} -integrals on the elliptic curve A' . Such Hodge integrals may be expressed [16] in terms of the descendent theory of an elliptic curve [43, 44].

For $m \geq 2$ ($\dim A \geq 3$), all invariants in genus $g \geq 2$ vanish. By Mumford's relation for $g \geq 2$,

$$\lambda_{g-1}^2 = 2\lambda_g \lambda_{g-2},$$

and λ_g annihilates the virtual fundamental class of non-constant maps to the elliptic curve A' . In genus 1, all invariants are multiples of

$$(10) \quad \int_{[\overline{M}_1(A', \beta')]^{\text{vir}}} \mathbf{1} = \frac{\sigma(d_1)}{d_1}$$

for β' of type (d_1) .

Case $k = 2$. For $g \geq 2$, stable maps in $\overline{M}_g(A, \beta)$ come in $(2 + m)$ -dimensional families via the translation action of A . The expected dimension modulo translation is

$$\text{vdim } \overline{M}_g(A, \beta) + r(2, m) - (2 + m) = (m - 1)(2 - g).$$

Similar to the $k = 1$ case, by eliminating each E -factor we find a surjective map $\mathbb{E}^\vee \rightarrow \mathcal{O}^{\oplus 2}$, and obtain a copy of the top Chern class of

$$\text{Ker}(\mathbb{E}^\vee \rightarrow \mathcal{O}^{\oplus 2})$$

which is $(-1)^{g-2}\lambda_{g-2}$.

The reduced Gromov-Witten theory of the abelian surface A' is the subject of Part I of the paper. For $m = 1$ ($\dim A = 3$), we find integrals of the form

$$\int_{[\overline{M}_g(A', \beta')]^{\text{red}}} (-1)^{g-2}\lambda_{g-2} \dots ,$$

where the dots stand for further terms in the integrand. Our interest in λ_{g-2} -integrals on an abelian surface (see (2) and Theorem 1) is directly motivated by Gromov-Witten theory in degenerate curve classes on abelian threefolds.

For $m \geq 2$ ($\dim A \geq 4$), all invariants in genus $g \geq 3$ vanish for dimension reasons. We are then reduced to the genus 2 invariants of A' and β' .

Case $k = 3$. Similar to the $k = 2$ case, for $g \geq 3$, the expected dimension modulo translation is

$$\text{vdim } \overline{M}_g(A, \beta) + r(3, m) - (3 + m) = m(3 - g).$$

Here by eliminating each E -factor we find a surjective map $\mathbb{E}^\vee \rightarrow \mathcal{O}^{\oplus 3}$, and obtain a copy of the top Chern class of

$$\text{Ker}(\mathbb{E}^\vee \rightarrow \mathcal{O}^{\oplus 3})$$

which is $(-1)^{g-3}\lambda_{g-3}$.

The reduced Gromov-Witten theory of the abelian threefold A' is studied in Part II of the paper. For $m \geq 1$ ($\dim A \geq 4$), all invariants in genus $g \geq 4$ vanish for dimension reasons. We are reduced to the genus 3 invariants of A' and β' .

Case $k \geq 4$. For $g \geq k$, the expected dimension modulo translation is

$$\begin{aligned} (11) \quad \text{vdim } \overline{M}_g(A, \beta) + r(k, m) - (k + m) \\ = (k - 3) \left(\frac{k}{2} + 1 - g \right) + m(k - g). \end{aligned}$$

The right hand side of (11) is always negative for $g \geq k \geq 4$. Hence, all invariants vanish.

In conclusion, the (reduced) Gromov-Witten theory of abelian varieties of arbitrary dimensions is completely determined by the (reduced) Gromov-Witten theories of abelian varieties of dimensions $1 \leq d \leq 3$. The analysis here justifies our focus on these low dimensions.

Furthermore, for abelian varieties of dimension at least 4, only genus $1 \leq g \leq 3$ invariants can possibly survive. Exact formulas¹¹ are available for the genus $1 \leq g \leq 3$ invariants which arise for abelian varieties of dimension at least 4.

¹¹For genus 1, the formula is (10). For genus 2, the formula is given by Theorem 1. For genus 3, the formula appears in Lemma 20.

Part I. Abelian surfaces

2. THE GENUS 2 CASE

2.1. Quotient Gromov-Witten invariants. Let A be an abelian surface, and let $\beta \in H_2(A, \mathbb{Z})$ be a curve class of type (d_1, d_2) with $d_1, d_2 > 0$. In Section 0.2.1, we defined invariants

$$\mathbf{N}_{g,\beta}^{\text{FLS}} = \mathbf{N}_{g,(d_1,d_2)}^{\text{FLS}}$$

counting genus g curves in a fixed linear system. It is sometimes more natural to count curves up to translation. A reasonable path¹² to the definition of such invariants is by integrating over the quotient stack

$$(12) \quad \overline{M}_g(A, \beta)/A.$$

Classically, people have taken a simpler course. Let

$$p : \overline{M}_g(A, \beta) \rightarrow \text{Pic}^\beta(A) \cong \widehat{A},$$

be the morphism which sends a curve $[f : C \rightarrow A]$ to the divisor class associated with its image curve.¹³ The map p is equivariant with respect to the actions of A on $\overline{M}_g(A, \beta)$ by translation and on \widehat{A} by the isogeny

$$\phi_\beta : A \rightarrow \widehat{A}.$$

An element $x \in A$ fixes a linear system of type (d_1, d_2) if and only if x is an element of

$$(13) \quad \text{Ker}(\phi_\beta : A \rightarrow \widehat{A}) \cong (\mathbb{Z}/d_1 \times \mathbb{Z}/d_2)^2.$$

The quotient space (12) equals the quotient of $\overline{M}_g(A, \beta)^{\text{FLS}}$ by the finite group (13) with $(d_1 d_2)^2$ elements. Therefore, we *define* the invariants counting curves up to translation by

$$(14) \quad \mathbf{N}_{g,(d_1,d_2)}^{\text{Q}} = \frac{1}{(d_1 d_2)^2} \mathbf{N}_{g,(d_1,d_2)}^{\text{FLS}}.$$

In genus 2, the invariants are related to the lattice counts considered in Section 1.3.

Lemma 3. *For all $d_1, d_2 > 0$,*

$$\mathbf{N}_{2,(d_1,d_2)}^{\text{Q}} = \nu(d_1, d_2).$$

¹²See Section 7.2 for such a treatment for abelian threefolds.

¹³The construction of p relies upon the Hilbert-Chow morphism.

Proof. Let β be of type (d_1, d_2) and assume $\text{End}_{\mathbb{Q}}(A) = \mathbb{Q}$. In particular, A is simple (contains no elliptic curves) and $\text{Aut}(A) = \{\pm 1\}$. It follows that every genus 2 stable map

$$f : C \rightarrow A$$

in class β has a nonsingular domain C . As discussed in Section 1.3, to such a map f , we can associate a polarized isogeny

$$(\widehat{A}, \widehat{\beta}) \rightarrow (J, \theta),$$

where J is the Jacobian of C .

Conversely, every simple principally polarized abelian surface (B, θ) is the Jacobian of a unique nonsingular genus 2 curve C . Hence, each polarized isogeny $(\widehat{A}, \widehat{\beta}) \rightarrow (B, \theta)$ induces a map

$$f : C \xrightarrow{\text{aj}} B \rightarrow A.$$

The map f is unique up to translation and automorphism of A . Moreover, the automorphism -1 of A corresponds to the hyperelliptic involution of C .

The abelian surface A acts freely¹⁴ on $\overline{M}_2(A, \beta)$ by translation. To prove this, we decompose a genus 2 map $f : C \rightarrow A$ as

$$f : C \xrightarrow{\text{aj}} J \xrightarrow{\pi} A.$$

First, since $[\text{aj}(C)]$ is a divisor class of type $(1, 1)$, the only element in J fixing $\text{aj}(C)$ is 0_J . Second, the preimage $\pi^{-1}(f(C))$ is the union

$$(15) \quad \bigcup_{x \in \text{Ker}(\pi)} t_x(\text{aj}(C)),$$

where $t_x : J \rightarrow J$ is the translation by x . Suppose a point $a \in A$ fixes $f(C)$, and let $b \in \pi^{-1}\{a\}$. By (15), we have

$$t_b(\text{aj}(C)) = t_x(\text{aj}(C))$$

for some $x \in \text{Ker}(\pi)$. In other words, the element $b - x \in J$ fixes $\text{aj}(C)$. Hence, $b - x = 0_J$ and $a = \pi(b) = \pi(b - x) = 0_A$.

It follows that $\overline{M}_2(A, \beta)/A$ is precisely a set of $\nu(d_1, d_2)$ isolated reduced points (or equivalently, $\overline{M}_2(A, \beta)^{\text{FLS}}$ is a set of $(d_1 d_2)^2 \nu(d_1, d_2)$ isolated reduced points). \square

¹⁴The action is in general *not* free in genus > 2 . For example, maps from nonsingular genus 3 hyperelliptic curves in class of type $(1, 2)$ have $\mathbb{Z}/2$ -stabilizers, see Sections 5.3 and 7.4.

2.2. Genus 2 counts. For genus 2, the following result determines the counts in all classes.

Theorem 6. *For all $d_1, d_2 > 0$,*

$$(16) \quad N_{2,(d_1,d_2)}^Q = \sum_{k|\gcd(d_1,d_2)} \sum_{\ell|\frac{d_1 d_2}{k^2}} k^3 \ell.$$

The primitive case (where $\gcd(d_1, d_2) = 1$) was proven in [13, 21, 33] via the lattice method discussed in Section 1.3 and in [8, 53] via geometric arguments. A closer look at the lattice method actually yields a proof of Theorem 6 in the general case.

Proof of Theorem 6. To prove (16) for $\nu(d_1, d_2)$, we are immediately reduced to the case $\nu(p^m, p^n)$ where p is a prime number and $m \leq n$. For $m = 0$, we have, by (8),

$$\nu(1, p^n) = \sigma(p^n) = \sum_{k=0}^n p^k.$$

It suffices then to prove the following recursion:

$$(17) \quad \nu(p^m, p^n) = \nu(1, p^{m+n}) + p^3 \nu(p^{m-1}, p^{n-1})$$

for $1 \leq m \leq n$.

The proof uses (7). Consider the quotient map

$$\pi : \mathbb{Z}/p^m \times \mathbb{Z}/p^n \rightarrow \mathbb{Z}/p^{m-1} \times \mathbb{Z}/p^{n-1}.$$

For $1 \leq r \leq s$, the map π induces a bijective correspondence between the following two sets:

- subgroups of $\mathbb{Z}/p^m \times \mathbb{Z}/p^n$ isomorphic to $\mathbb{Z}/p^r \times \mathbb{Z}/p^s$,
- subgroups of $\mathbb{Z}/p^{m-1} \times \mathbb{Z}/p^{n-1}$ isomorphic to $\mathbb{Z}/p^{r-1} \times \mathbb{Z}/p^{s-1}$.

We also have

$$\begin{aligned} \# \operatorname{Hom}^{\operatorname{sym}}(\mathbb{Z}/p^r \times \mathbb{Z}/p^s, \widehat{\mathbb{Z}/p^r \times \mathbb{Z}/p^s}) \\ = p^3 \# \operatorname{Hom}^{\operatorname{sym}}(\mathbb{Z}/p^{r-1} \times \mathbb{Z}/p^{s-1}, \widehat{\mathbb{Z}/p^{r-1} \times \mathbb{Z}/p^{s-1}}). \end{aligned}$$

The remaining subgroups of $\mathbb{Z}/p^m \times \mathbb{Z}/p^n$ are cyclic and isomorphic to \mathbb{Z}/p^k for some $0 \leq k \leq n$. Moreover,

$$\# \operatorname{Hom}^{\operatorname{sym}}(\mathbb{Z}/p^k, \widehat{\mathbb{Z}/p^k}) = \# \operatorname{Hom}(\mathbb{Z}/p^k, \widehat{\mathbb{Z}/p^k}) = p^k.$$

Applying (7), we find

$$\nu(p^m, p^n) = \sum_{k=0}^n p^k \# \{ \mathbb{Z}/p^k < \mathbb{Z}/p^m \times \mathbb{Z}/p^n \} + p^3 \nu(p^{m-1}, p^{n-1}).$$

The numbers of cyclic subgroups can be deduced from classical group theory (see [10, Lemma 1.4.1]):

$$\#\{\mathbb{Z}/p^k < \mathbb{Z}/p^m \times \mathbb{Z}/p^n\} = \sum_{\substack{0 \leq i \leq m, 0 \leq j \leq n \\ \max(i,j)=k}} \varphi(p^{\min(i,j)}),$$

where φ is Euler's phi function.¹⁵ We have

$$\begin{aligned} & \sum_{k=0}^n p^k \#\{\mathbb{Z}/p^k < \mathbb{Z}/p^m \times \mathbb{Z}/p^n\} \\ &= \sum_{k=0}^n p^k \sum_{\substack{0 \leq i \leq m, 0 \leq j \leq n \\ \max(i,j)=k}} \varphi(p^{\min(i,j)}) \\ &= \sum_{k=0}^m p^k \sum_{i=0}^k \varphi(p^i) + \sum_{k=m+1}^n p^k \sum_{i=0}^m \varphi(p^i) + \sum_{k=1}^m p^k \sum_{j=0}^{k-1} \varphi(p^j) \\ &= \sum_{k=0}^m p^{2k} + \sum_{k=m+1}^n p^{m+k} + \sum_{k=1}^m p^{2k-1} \\ &= \sum_{k=0}^{m+n} p^k = \nu(1, p^{m+n}), \end{aligned}$$

proving the recursion (17). Theorem 6 then follows from Lemma 3. \square

Since $g = 2$ is the minimal genus for curve counting on abelian surfaces, Theorem 6 may be viewed as the analogue of the Yau-Zaslow conjecture [60] for $g = 0$ counting on $K3$ surfaces. In the $K3$ case, primitive classes were handled first in [1, 9]. To treat the imprimitive classes, a completely new approach [29] was required (and came a decade later). For abelian surfaces, the lattice counting for the primitive case is much easier than the complete result of Theorem 6. The perfect matching of the lattice counts in all cases with formula of Theorem 6 appears miraculous.

2.3. Multiple cover rule. A multiple cover formula in $g = 2$ can be extracted from Theorem 6. The result follows the structure of the complete multiple cover formula for $K3$ surfaces [47]. We state here the multiple cover conjecture for the invariants $\mathbf{N}_{g,(d_1,d_2)}^{\mathbb{Q}}$ for all g .

For $d_1, d_2 > 0$, define the generating series of the *quotient* invariants:

$$f_{(d_1,d_2)}(u) = \sum_{g \geq 2} \mathbf{N}_{g,(d_1,d_2)}^{\mathbb{Q}} u^{2g-2}.$$

¹⁵ $\varphi(1) = 1$ and $\varphi(p^k) = p^k - p^{k-1}$ for $k \geq 1$.

The quotient invariants are defined in terms of the FLS invariants in (14).

Conjecture A'. For all $d_1, d_2 > 0$,

$$f_{(d_1, d_2)}(u) = \sum_{k | \gcd(d_1, d_2)} k f_{(1, \frac{d_1 d_2}{k^2})}(ku).$$

Theorem 6 implies the $g = 2$ case of Conjecture A'. By an elementary check, Conjecture A is *equivalent* to Conjecture A' plus the $k = 0$ case of Theorem 2. Since Theorem 2 is proven in Section 3, Conjectures A and A' are equivalent.

3. PRIMITIVE CLASSES

3.1. Overview. Let A be an abelian surface, let $g \geq 2$ be the genus, and let $\beta \in H_2(A, \mathbb{Z})$ be a curve class of type (d_1, d_2) with $d_1, d_2 > 0$. The class β is primitive if $\gcd(d_1, d_2) = 1$.

The proof of Theorem 2 is presented here. We proceed in two steps. First, we relate the FLS invariants to the reduced Gromov-Witten invariants of A with pure point insertions and λ classes in Sections 3.2 and 3.3. Next, we degenerate an elliptically fibered abelian surface A . Using the degeneration formula in Sections 3.4 and 3.5, we reduce the calculation to an evaluation on $\mathbb{P}^1 \times E$. The proof of Theorem 2 is completed in Section 3.6.

We conclude with an application in Section 3.7: a new proof is presented of a result by Göttsche and Shende [22] concerning the Euler characteristics of the moduli spaces of stable pairs on abelian surfaces in irreducible classes.

3.2. Notation. Let $\alpha \in H^*(\overline{M}_{g,n}, \mathbb{Q})$ be a cohomology class on the moduli space of stable curves $\overline{M}_{g,n}$, and let

$$\gamma_1, \dots, \gamma_n \in H^*(A, \mathbb{Q})$$

be cohomology classes on A . The classes α and γ_i can be pulled back to the moduli spaces

$$\overline{M}_{g,n}(A, \beta)^{\text{FLS}} \quad \text{and} \quad \overline{M}_{g,n}(A, \beta)$$

via the forgetful map π and the evaluation maps $\text{ev}_1, \dots, \text{ev}_n$.

For each marking $i \in \{1, \dots, n\}$, let L_i be the associated cotangent line bundle on $\overline{M}_{g,n}(A, \beta)$. Let

$$\psi_i = c_1(L_i) \in H^2(\overline{M}_{g,n}(A, \beta), \mathbb{Q})$$

be the first Chern class. Since

$$\overline{M}_{g,n}(A, \beta)^{\text{FLS}} \subset \overline{M}_{g,n}(A, \beta),$$

the classes ψ_i restrict to $\overline{M}_{g,n}(A, \beta)^{\text{FLS}}$.

The reduced Gromov-Witten invariants of A are defined by:

$$\left\langle \alpha; \tau_{a_1}(\gamma_1) \cdots \tau_{a_n}(\gamma_n) \right\rangle_{g,\beta}^{A,\text{red}} = \int_{[\overline{M}_{g,n}(A,\beta)]^{\text{red}}} \pi^*(\alpha) \prod_{i=1}^n \text{ev}_i^*(\gamma_i) \psi_i^{a_i}.$$

The FLS invariants of A are defined by:

$$\left\langle \alpha; \tau_{a_1}(\gamma_1) \cdots \tau_{a_n}(\gamma_n) \right\rangle_{g,\beta}^{A,\text{FLS}} = \int_{[\overline{M}_{g,n}(A,\beta)]^{\text{FLS}}^{\text{red}}} \pi^*(\alpha) \prod_{i=1}^n \text{ev}_i^*(\gamma_i) \psi_i^{a_i}.$$

The FLS invariants can be expressed in terms of the usual invariants by a result¹⁶ of Bryan and Leung [8] as follows. Let

$$\xi_1, \xi_2, \xi_3, \xi_4 \in H_1(A, \mathbb{Z})$$

be a basis for which the corresponding dual classes

$$\widehat{\xi}_1, \widehat{\xi}_2, \widehat{\xi}_3, \widehat{\xi}_4 \in H^1(\widehat{A}, \mathbb{Z}) \cong H_1(A, \mathbb{Z})$$

satisfy the normalization

$$\int_{\widehat{A}} \widehat{\xi}_1 \cup \widehat{\xi}_2 \cup \widehat{\xi}_3 \cup \widehat{\xi}_4 = 1.$$

By first trading the higher descendants $\tau_k(\gamma_i)$ for classes pulled back from $\overline{M}_{g,n}$ up to boundary terms, we may reduce to non-gravitational insertions $\tau_0(\gamma_i)$. Then

$$(18) \quad \left\langle \alpha; \prod_{i=1}^n \tau_0(\gamma_i) \right\rangle_{g,\beta}^{A,\text{FLS}} = \left\langle \alpha; \prod_{i=1}^4 \tau_0(\xi_i) \cdot \prod_{i=1}^n \tau_0(\gamma_i) \right\rangle_{g,\beta}^{A,\text{red}},$$

where α on the right side of (18) is viewed to be a cohomology class on $\overline{M}_{g,n+4}$ via pull-back along the map which forgets the four new points.

¹⁶See [31, Section 4] for an algebraic proof.

3.3. Odd and even classes.

3.3.1. *Trading FLS for insertions.* We prove here the following simple rule which trades the FLS condition for insertions in the reduced Gromov-Witten theory of A .

As in Section 0.2.2, let $\mathbf{p} \in H^4(A, \mathbb{Z})$ be the class of a point.

Proposition 2. *For $g \geq 2$ and $d_1, d_2 > 0$, we have*

$$\left\langle \alpha; \tau_0(\mathbf{p})^k \right\rangle_{g, (d_1, d_2)}^{A, \text{FLS}} = \frac{d_1 d_2}{(k+1)(k+2)} \left\langle \alpha; \tau_0(\mathbf{p})^{k+2} \right\rangle_{g, (d_1, d_2)}^{A, \text{red}}$$

for all $\alpha \in H^*(\overline{M}_g, \mathbb{Q})$ and $k \geq 0$.

The proof uses the action of A on the moduli space $\overline{M}_{g,n}(A, \beta)$ to produce relation among various Gromov-Witten invariants. The argument is a modification of an elliptic vanishing argument introduced in [44].

3.3.2. *Abelian vanishing.* Let $\beta \in H_2(A, \mathbb{Z})$ be any curve class. For $n \geq 1$, let

$$\text{ev}_1 : \overline{M}_{g,n}(A, \beta) \rightarrow A$$

be the first evaluation map. Denote the fiber of the identity element $0_A \in A$ by

$$\overline{M}_{g,n}^0(A, \beta) = \text{ev}_1^{-1}(0_A).$$

We have the product decomposition

$$(19) \quad \overline{M}_{g,n}(A, \beta) = \overline{M}_{g,n}^0(A, \beta) \times A.$$

The reduced virtual class on $\overline{M}_{g,n}(A, \beta)$ is pulled back from a class on $\overline{M}_{g,n}^0(A, \beta)$. Consider the commutative diagram

$$\begin{array}{ccc} \overline{M}_{g,n}(A, \beta) & \xrightarrow{\text{ev}} & A^n \\ \downarrow \text{pr} & & \downarrow p \\ \overline{M}_{g,n}^0(A, \beta) & \longrightarrow & A^{n-1} \end{array}$$

where pr is projection onto the first factor of (19) and

$$p(x_1, \dots, x_n) = (x_2 - x_1, \dots, x_n - x_1).$$

Lemma 4. *Let $\alpha \in H^*(\overline{M}_{g,n}, \mathbb{Q})$ and $\gamma \in H^*(A^{n-1}, \mathbb{Q})$ be arbitrary classes. For any $\gamma_1 \in H^*(A, \mathbb{Q})$ of degree $\deg(\gamma_1) \leq 3$,*

$$\int_{[\overline{M}_{g,n}(A, \beta)]^{\text{red}}} \pi^*(\alpha) \cup \text{ev}_1^*(\gamma_1) \cup \text{ev}^* p^*(\gamma) = 0.$$

Proof. The class

$$\left(\pi^*(\alpha) \cup \text{ev}^* p^*(\gamma) \right) \cap [\overline{M}_{g,n}(A, \beta)]^{\text{red}}$$

is the pull-back via pr of a class θ on $\overline{M}_{g,n}^0(A, \beta)$. Using the push-pull formula, we have

$$\text{pr}_* \left(\text{ev}_1^*(\gamma_1) \cap \text{pr}^*(\theta) \right) = \text{pr}_* \text{ev}_1^*(\gamma_1) \cap \theta = 0.$$

The last equality holds for dimension reasons since $\gamma_1 \in H^{\leq 3}(A, \mathbb{Q})$ and the fibers of pr are A . \square

3.3.3. *Proof of Proposition 2.* We study the split abelian surface

$$A = E_1 \times E_2,$$

where E_1 and E_2 are two generic elliptic curves. Consider the curve class

$$(d_1, d_2) = d_1[E_1] + d_2[E_2] \in H_2(A, \mathbb{Z}).$$

For $i \in \{1, 2\}$, let $\omega_i \in H^2(E_i, \mathbb{Z})$ be the class of a point on E_i , and let

$$\mathbf{a}_i, \mathbf{b}_i \in H^1(E_i, \mathbb{Z})$$

be a symplectic basis. We use freely the identification induced by the Künneth decomposition

$$H^*(E_1 \times E_2, \mathbb{Z}) = H^*(E_1, \mathbb{Z}) \otimes H^*(E_2, \mathbb{Z}).$$

The proof of Proposition 2 follows directly from (18) and the following two Lemmas.

Lemma 5. *For $\alpha \in H^*(\overline{M}_g, \mathbb{Q})$, we have*

$$\begin{aligned} d_2 \left\langle \alpha ; \tau_0(\mathbf{p})^{k+2} \right\rangle_{g, (d_1, d_2)}^{A, \text{red}} \\ = (k+2) \cdot \left\langle \alpha ; \tau_0(\mathbf{a}_1 \omega_2) \tau_0(\mathbf{b}_1 \omega_2) \tau_0(\mathbf{p})^{k+1} \right\rangle_{g, (d_1, d_2)}^{A, \text{red}}. \end{aligned}$$

Proof. Consider the class

$$\gamma = \mathbf{b}_1 \omega_2 \otimes \mathbf{p}^{\otimes k+1} \in H^*(A^{k+2}, \mathbb{Q}).$$

In the notation of Section 3.3.2 for $n = k + 3$, we have

$$(20) \quad p^*(\mathbf{1}^{\otimes i-1} \otimes v \otimes \mathbf{1}^{\otimes k+2-i}) = -v \otimes \mathbf{1}^{\otimes k+2} + \mathbf{1}^{\otimes i} \otimes v \otimes \mathbf{1}^{\otimes k+2-i}$$

for all $i = 1, \dots, k+2$ and all $v \in \{\mathbf{a}_1, \mathbf{b}_1, \mathbf{a}_2, \mathbf{b}_2\}$.

Denote the projection onto the first factor of A^{k+3} by

$$\pi_1 : A^{k+3} \rightarrow A.$$

Let $u = \mathbf{a}_1\omega_2$. Via several applications of (20), we find

$$\begin{aligned} \pi_1^*(u) \cup p^*(\gamma) &= \mathbf{a}_1\omega_2 \otimes \mathbf{b}_1\omega_2 \otimes \mathbf{p}^{\otimes k+1} - \mathbf{p} \otimes \omega_2 \otimes \mathbf{p}^{\otimes k+1} \\ &\quad - \sum_{i=1}^{k+1} \mathbf{p} \otimes \mathbf{b}_1\omega_2 \otimes \mathbf{p}^{\otimes i-1} \otimes \mathbf{a}_1\omega_2 \otimes \mathbf{p}^{\otimes k+1-i}. \end{aligned}$$

After applying the abelian vanishing of Lemma 4, we obtain

$$\begin{aligned} \left\langle \alpha; \tau_0(\omega_2)\tau_0(\mathbf{p})^{k+2} \right\rangle_{g,(d_1,d_2)}^{A,\text{red}} \\ = (k+2) \left\langle \alpha; \tau_0(\mathbf{a}_1\omega_2)\tau_0(\mathbf{b}_1\omega_2)\tau_0(\mathbf{p})^{k+1} \right\rangle_{g,(d_1,d_2)}^{A,\text{red}}. \end{aligned}$$

The Lemma then follows from the divisor equation. \square

Lemma 6. *For $\alpha \in H^*(\overline{M}_g, \mathbb{Q})$, we have*

$$\begin{aligned} d_1 \left\langle \alpha; \tau_0(\mathbf{a}_1\omega_2)\tau_0(\mathbf{b}_1\omega_2)\tau_0(\mathbf{p})^{k+1} \right\rangle_{g,(d_1,d_2)}^{A,\text{red}} \\ = (k+1) \left\langle \alpha; \tau_0(\mathbf{a}_1\omega_2)\tau_0(\mathbf{b}_1\omega_2)\tau_0(\omega_1\mathbf{a}_2)\tau_0(\omega_1\mathbf{b}_2)\tau_0(\mathbf{p})^k \right\rangle_{g,(d_1,d_2)}^{A,\text{red}}. \end{aligned}$$

Proof. Consider the class

$$\gamma = \omega_1\mathbf{b}_2 \otimes \mathbf{a}_1\omega_2 \otimes \mathbf{b}_1\omega_2 \otimes \mathbf{p}^{\otimes k}$$

and let $u = \omega_1\mathbf{a}_2$. We apply the abelian vanishing just as in the proof of Lemma 5. Every term with an insertion of the form $\tau_0(vw)$ for $v \in \{\mathbf{a}_1, \mathbf{b}_1\}$ and $w \in \{\mathbf{a}_2, \mathbf{b}_2\}$ contributes zero by the divisor equation. We obtain

$$\begin{aligned} \left\langle \alpha; \tau_0(\omega_1)\tau_0(\mathbf{a}_1\omega_2)\tau_0(\mathbf{b}_1\omega_2)\tau_0(\mathbf{p})^{k+1} \right\rangle_{g,(d_1,d_2)}^{A,\text{red}} \\ = (k+1) \left\langle \alpha; \tau_0(\mathbf{a}_1\omega_2)\tau_0(\mathbf{b}_1\omega_2)\tau_0(\omega_1\mathbf{a}_2)\tau_0(\omega_1\mathbf{b}_2)\tau_0(\mathbf{p})^k \right\rangle_{g,(d_1,d_2)}^{A,\text{red}}, \end{aligned}$$

which yields the result by an application of the divisor equation. \square

3.4. Degeneration formula. Let the abelian surface A

$$A = E_1 \times E_2$$

be the product of two generic elliptic curves E_1 and E_2 , and let

$$E = 0_{E_1} \times E_2$$

be a fixed fiber of the projection to E_1 . The degeneration of A to the normal cone of $E \subset A$ is the family

$$(21) \quad \epsilon : X = \text{Bl}_{E \times 0}(A \times \mathbb{P}^1) \rightarrow \mathbb{P}^1.$$

For $\xi \in \mathbb{P}^1 \setminus \{0\}$, the fiber $X_\xi = \epsilon^{-1}(\xi)$ is isomorphic to A . For $\xi = 0$, we have

$$X_0 = A \cup_E (\mathbb{P}^1 \times E).$$

We will apply the degeneration formula of Gromov-Witten theory [34, 35] to the family (21).

For our use, the degeneration formula must be modified for the reduced virtual class. More precisely, the degeneration formula expresses the reduced Gromov-Witten theory of A in terms of the reduced relative Gromov-Witten theory of A/E and standard relative Gromov-Witten theory of $(\mathbb{P}^1 \times E)/E$. The technical point in the modification of the degeneration formula is to define a reduced virtual class on the moduli space

$$\overline{M}_{g,n}(\epsilon, \beta)$$

of stable maps to the fibers of ϵ . Note that every fiber X_ξ and every extended degeneration \widehat{X}_ξ maps to the abelian surface A . The pull-back of the symplectic form of A to \widehat{X}_ξ then yields a 2-form on \widehat{X}_ξ which vanishes on all components except A . With the usual arguments [39, 40], we obtain a quotient of the obstruction sheaf which only changes the obstruction sheaf on the A side. The outcome is the desired degeneration formula. A parallel argument can be found in [40, Section 6].

3.5. The surface $\mathbb{P}^1 \times E$. For the trivial elliptic fibrations

$$p : A \rightarrow E_1 \quad \text{and} \quad \widehat{p} : \mathbb{P}^1 \times E \rightarrow \mathbb{P}^1,$$

we denote the section class by B and the fiber class by E . We also write

$$(d_1, d_2) = d_1 B + d_2 E$$

for the corresponding classes in $H_2(A, \mathbb{Z})$ and $H_2(\mathbb{P}^1 \times E, \mathbb{Z})$.

We will use the standard bracket notation

$$\begin{aligned} \left\langle \mu \mid \alpha \prod_i \tau_{a_i}(\gamma_i) \mid \nu \right\rangle_{g,(1,d)}^{\mathbb{P}^1 \times E} \\ = \int_{[\overline{M}_{g,n}((\mathbb{P}^1 \times E)/\{0,\infty\},(1,d))_{\mu,\nu'}]^{vir}} \alpha \cup \prod_i \psi_i^{a_i} \text{ev}_i^*(\gamma_i) \end{aligned}$$

for the Gromov-Witten invariants of $\mathbb{P}^1 \times E$ relative to the fibers over $0, \infty \in \mathbb{P}^1$. The integral is over the moduli space of stable maps

$$\overline{M}_{g,n}((\mathbb{P}^1 \times E)/\{0, \infty\}, (1, d))$$

relative the fibers over $0, \infty \in \mathbb{P}^1$ in class $(1, d)$. Here,

$$\mu \in H^*(0 \times E) \quad \text{and} \quad \nu \in H^*(\infty \times E)$$

are cohomology classes on the relative divisors. The integrand contains $\alpha \in H^*(\overline{M}_{g,n}, \mathbb{Q})$ and the descendents.

We form the generating series of relative invariants

$$\begin{aligned} \left\langle \mu \mid \alpha \prod_i \tau_{a_i}(\gamma_i) \mid \nu \right\rangle^{\mathbb{P}^1 \times E} \\ = \sum_{g \geq 0} \sum_{d \geq 0} u^{2g-2} q^d \left\langle \mu \mid \alpha \prod_i \tau_{a_i}(\gamma_i) \mid \nu \right\rangle_{g, (1, d)}^{\mathbb{P}^1 \times E}. \end{aligned}$$

Similar definitions apply also to the case of a single relative divisor and/or the case of the abelian surface A (with respect to the reduced virtual class).

We will require several exact evaluations. Let

$$\mathbb{E}^\vee(1) = c(\mathbb{E}^\vee)$$

denote the total Chern class of the dual of the Hodge bundle, and let ω be the class of a point on the relative divisors of A and $E \times \mathbb{P}^1$.

Lemma 7. *We have*

$$\begin{aligned} \left\langle 1 \mid \mathbb{E}^\vee(1) \tau_0(\mathbf{p}) \mid 1 \right\rangle^{\mathbb{P}^1 \times E} &= \frac{1}{u^2}, \\ \left\langle 1 \mid \mathbb{E}^\vee(1) \tau_0(\mathbf{p}) \mid \omega \right\rangle^{\mathbb{P}^1 \times E} &= \frac{1}{u^2} \sum_{d \geq 1} \sum_{m|d} \frac{d}{m} \left(2 \sin(mu/2)\right)^2 q^d, \\ \left\langle \omega \mid \mathbb{E}^\vee(1) \tau_0(\mathbf{p}) \mid \omega \right\rangle^{\mathbb{P}^1 \times E} &= 0. \end{aligned}$$

Proof. The first equation is obtained by exactly following the proof of [40, Lemma 24]. The second equation follows from [40, Lemmas 25 and 26]. For the third equality, the point conditions on the relative divisors can be chosen to be different. Then, since the degree over \mathbb{P}^1 is 1 (and there are no nonconstant maps from \mathbb{P}^1 to E), the moduli space with the relative conditions imposed is empty. \square

Lemma 8. *For $g \geq 0$ and $d \geq 0$,*

$$\left\langle \mathbb{E}^\vee(1) \mid \omega \right\rangle_{g, (1, d)}^{A, \text{red}} = \delta_{g, 1} \delta_{d, 0}.$$

Proof. By dimension reasons only the term

$$(-1)^{g-1} \lambda_{g-1} = c_{g-1}(\mathbb{E}^\vee)$$

contributes in the evaluation of Lemma 8.

Case $d > 0$. We will prove the vanishing of λ_{g-1} on $\overline{M}_g(A/E, \beta)$ by giving two linearly independent sections of \mathbb{E} .

Let $\gamma, \gamma' \in H^0(A, \Omega_A)$ be the pull-backs to A of non-zero global differential forms on E_1 and E_2 respectively. Let

$$\pi : \mathcal{C} \rightarrow \overline{M}_g(A/E, \beta)$$

be the universal curve and $f : \mathcal{C} \rightarrow A$ be the universal map. We have the induced sequence

$$\mathcal{O}_{\mathcal{C}}^2 \xrightarrow{(\gamma, \gamma')} f^* \Omega_A \rightarrow \Omega_{\pi} \rightarrow \omega_{\pi}.$$

By pushforward via π we obtain the sequence

$$s : \mathcal{O}_{\overline{M}_g(A/E, \beta)}^2 \rightarrow \pi_* \omega_{\pi} = \mathbb{E}.$$

If s does not define a 2-dimensional subbundle of \mathbb{E} , there exists a map $f_0 : C \rightarrow A$ in class $(1, d)$ and nonzero elements $c, c' \in \mathbb{C}$ such that

$$f_0^*(c\gamma + c'\gamma') = 0.$$

Thus f_0 must map to a (translate of a) 1-dimensional abelian subvariety V inside $E_1 \times E_2$. Because f has degree $(1, d)$, the subvariety V induces an isogeny between E_1 and E_2 . But E_1 and E_2 were chosen generic, which is a contradiction. Hence s is injective and $\lambda_{g-1} = 0$.

Case $d = 0$. Then, we have the factor $R^1 \pi_*(f^* T_{E_2})$ inside the obstruction sheaf, which yields an additional class $(-1)^{g-1} \lambda_{g-1}$ after reduction. Therefore,

$$\left\langle \mathbb{E}^{\vee}(1) \mid \omega \right\rangle_{g, (1, 0)}^{A, \text{red}} = \int_{[\overline{M}_g(E_1/0, 1)]^{\text{vir}}} \lambda_{g-1}^2.$$

For $g \geq 2$, we have $\lambda_{g-1}^2 = 2\lambda_g \lambda_{g-2}$ by Mumford's relation. By pulling-back the global non-zero 1-form from E_1 , we obtain a 1-dimensional subbundle of \mathbb{E} . Therefore, $\lambda_g = 0$ and the integral vanishes.

Finally, for $g = 1$ and $d = 0$ the moduli space $\overline{M}_1(E_1/0, 1)$ is a single point and the invariant is 1. \square

3.6. Proof of Theorem 2. We are now able to evaluate the invariants $\mathbf{N}_{g, k, (1, d)}^{\text{FLS}}$ of Section 0.2.2 and prove Theorem 2. By definition,

$$(22) \quad \sum_{g \geq 2} \sum_{d \geq 1} \mathbf{N}_{g, k, (1, d)}^{\text{FLS}} u^{2g-2} q^d = \sum_{g \geq 2} \sum_{d \geq 1} u^{2g-2} q^d \left\langle \mathbb{E}^{\vee}(1) \tau_0(\mathbf{p})^k \right\rangle_{g, (1, d)}^{A, \text{FLS}}.$$

By Proposition 2, the right side of (22) equals

$$q \frac{d}{dq} \frac{1}{(k+1)(k+2)} \sum_{g \geq 0} \sum_{d \geq 0} u^{2g-2} q^d \left\langle \mathbb{E}^\vee(1) \tau_0(\mathbf{p})^{k+2} \right\rangle_{g,(1,d)}^{A,\text{red}}.$$

Next, we apply the degeneration formula. Only one term satisfies the dimension constraints:

$$q \frac{d}{dq} \frac{u^2}{(k+1)(k+2)} \cdot \left\langle \mathbb{E}^\vee(1) \mid \omega \right\rangle^{A,\text{red}} \cdot \left\langle \mathbf{1} \mid \mathbb{E}^\vee(1) \tau_0(\mathbf{p})^{k+2} \right\rangle^{\mathbb{P}^1 \times E}.$$

An application of Lemma 8 then yields

$$q \frac{d}{dq} \frac{u^2}{(k+1)(k+2)} \cdot \left\langle \mathbf{1} \mid \mathbb{E}^\vee(1) \tau_0(\mathbf{p})^{k+2} \right\rangle^{\mathbb{P}^1 \times E}.$$

We degenerate the base \mathbb{P}^1 to obtain a chain of $k+3$ surfaces isomorphic to $\mathbb{P}^1 \times E$. The first $k+2$ of these each receive a single insertion $\tau_0(\mathbf{p})$. Using the vanishing of Lemma 7 and the evaluation of the last $\mathbb{P}^1 \times E$ by [40, Lemma 24], we obtain

$$q \frac{d}{dq} \frac{u^2(k+2)}{(k+1)(k+2)} \cdot \left\langle \mathbf{1} \mid \mathbb{E}^\vee(1) \tau_0(\mathbf{p}) \mid \mathbf{1} \right\rangle^{\mathbb{P}^1 \times E} \cdot \left(u^2 \left\langle \mathbf{1} \mid \mathbb{E}^\vee(1) \tau_0(\mathbf{p}) \mid \omega \right\rangle^{\mathbb{P}^1 \times E} \right)^{k+1}.$$

A further application of Lemma 7 yields

$$q \frac{d}{dq} \frac{1}{k+1} \left(\sum_{d \geq 1} \sum_{m|d} \frac{d}{m} \left(2 \sin(mu/2) \right)^2 q^d \right)^{k+1}.$$

Rewriting the result in the variables

$$p = e^{2\pi iz}, \quad q = e^{2\pi i\tau}$$

and $u = 2\pi z$, we obtain

$$q \frac{d}{dq} \frac{1}{k+1} \left(- \sum_{d \geq 1} \sum_{m|d} \frac{d}{m} (p^m - 2 + p^{-m}) q^d \right)^{k+1} = q \frac{d}{dq} \frac{1}{k+1} \mathbf{S}(z, \tau)^{k+1}.$$

The proof of Theorem 2 is thus complete. \square

3.7. Relation to stable pairs invariants. Let A be an abelian surface and let β be an *irreducible* curve class of type $(1, d)$. Let

$$P_n(A, \beta)$$

be the moduli space of stable pairs (F, s) on A in class β and with Euler characteristic $\chi(F) = n$, see [46]. The moduli spaces $P_n(A, \beta)$ are isomorphic to the relative Hilbert scheme over the universal family of curves in class β . It is nonsingular of dimension $2d + n + 1$.

Consider the Hilbert-Chow map

$$p : P_n(A, \beta) \rightarrow \text{Pic}^\beta(A) \cong \widehat{A}.$$

which sends a stable pair (F, s) to the divisor class associated to the support of F . The map is equivariant with respect to the action of A and is an isotrivial étale fibration. The fiber of p over $0_{\widehat{A}}$ is denoted by

$$P_n(A, \beta)^{\text{FLS}} = p^{-1}(0_{\widehat{A}}),$$

We define the FLS stable pairs invariants in class β by the signed Euler characteristic

$$(23) \quad \mathbf{P}_{n,\beta}^{\text{FLS}} = (-1)^{2d+n-1} e(P_n(A, \beta)^{\text{FLS}}).$$

The definition agrees with the definition of residue stable pairs invariants of the threefold $A \times \mathbb{C}$ using torus localization, see [40].

By deformation invariance of the Euler characteristic under deformations with smooth fibers, $\mathbf{P}_{n,\beta}^{\text{FLS}}$ only depends on the type $(1, d)$ of the irreducible class β . We write

$$\mathbf{P}_{n,\beta}^{\text{FLS}} = \mathbf{P}_{n,(1,d)}^{\text{FLS}}.$$

The Euler characteristics (23) (in fact the χ_y -genus) have been computed by Göttsche and Shende in [22]:

Theorem 7 (Göttsche-Shende [22]). *We have*

$$\sum_{d \geq 1} \sum_{n \in \mathbb{Z}} \mathbf{P}_{n,(1,d)}^{\text{FLS}} (-p)^n q^d = - \sum_{d \geq 1} \sum_{m|d} \frac{d^2}{m} (p^m - 2 + p^{-m}) q^d.$$

The $k = 0$ case of Theorem 2 yields a second proof of this result: using an analog of the abelian vanishing relation (Lemma 4) for stable pairs, we may express the FLS condition by point insertions on the full moduli space $P_n(A, \beta)$ as in Proposition 2. After degenerating the abelian surface A to $\mathbb{P}^1 \times E$, we can apply the Gromov-Witten/Pairs correspondence [45], which yields the result.

In [40], a parallel study of the reduced invariants of $K3$ surfaces was undertaken. The Gromov-Witten/Pairs correspondence and the Euler characteristic calculations of Kawai-Yoshioka [27] were together used to evaluate the Gromov-Witten side to prove the primitive Katz-Klemm-Vafa conjecture. The analogue of the Kawai-Yoshioka calculation for abelian surfaces is Theorem 7. However, for abelian surfaces we are able to evaluate the Gromov-Witten side directly without using input from the stable pairs side.

4. QUASI-MODULAR FORMS

4.1. **Descendent series.** Let $A = E_1 \times E_2$ be the product of two generic elliptic curves E_1 and E_2 , and let

$$(d_1, d_2) = d_1[E_1] + d_2[E_2] \in H_2(A, \mathbb{Z}).$$

For $i \in \{1, 2\}$, let $\omega_i \in H^2(E_i, \mathbb{Z})$ be the class of a point on E_i and let

$$\mathbf{a}_i, \mathbf{b}_i \in H^1(E_i, \mathbb{Z})$$

be a symplectic basis. As before, we use freely the identification induced by the Künneth decomposition

$$H^*(E_1 \times E_2, \mathbb{Z}) = H^*(E_1, \mathbb{Z}) \otimes H^*(E_2, \mathbb{Z}).$$

A class $\gamma \in H^*(A, \mathbb{Q})$ is *monomial* if γ is a product

$$\gamma = \mathbf{a}_1^i \mathbf{b}_1^j \mathbf{a}_2^k \mathbf{b}_2^l, \quad i, j, k, l \in \{0, 1\}.$$

A basis of the cohomology of A is given by monomial classes. For a monomial class γ , we denote by $v_s(\gamma)$ the exponent of $s \in \{\mathbf{a}_1, \mathbf{b}_1, \mathbf{a}_2, \mathbf{b}_2\}$ in γ . Hence,

$$\gamma = \mathbf{a}_1^{v_{\mathbf{a}_1}(\gamma)} \mathbf{b}_1^{v_{\mathbf{b}_1}(\gamma)} \mathbf{a}_2^{v_{\mathbf{a}_2}(\gamma)} \mathbf{b}_2^{v_{\mathbf{b}_2}(\gamma)}.$$

Let $\gamma_1, \dots, \gamma_n \in H^*(A, \mathbb{Q})$ be monomial classes, and let

$$a_1, \dots, a_n \in \mathbb{Z}^{\geq 0}$$

be non-negative integers. The primitive descendent potential of A with insertions $\tau_{a_1}(\gamma_1) \dots \tau_{a_n}(\gamma_n)$ is defined by

$$\mathbf{F}_g^A(\tau_{a_1}(\gamma_1) \dots \tau_{a_n}(\gamma_n)) = \sum_{d \geq 0} \left\langle \tau_{a_1}(\gamma_1) \dots \tau_{a_n}(\gamma_n) \right\rangle_{g, (1, d)}^{A, \text{red}} q^d.$$

Theorem 3 states a modularity¹⁷ property for $\mathbf{F}_g^A(\tau_{a_1}(\gamma_1) \dots \tau_{a_n}(\gamma_n))$. The following refined result will be proven here.

Theorem 8. *The primitive descendent potential satisfies the following properties for all $g \geq 1$:*

(i) $\mathbf{F}_g^A(\tau_{a_1}(\gamma_1) \dots \tau_{a_n}(\gamma_n))$ vanishes unless

$$\sum_{k=1}^n v_{\mathbf{a}_i}(\gamma_k) = \sum_{k=1}^n v_{\mathbf{b}_i}(\gamma_k), \quad i \in \{1, 2\}.$$

(ii) $\mathbf{F}_g^A(\tau_{a_1}(\gamma_1) \dots \tau_{a_n}(\gamma_n)) \in \text{QMod}_{2(g-2)+2\ell}$ for $\ell = \sum_{k=1}^n v_{\mathbf{a}_2}(\gamma_k)$.

¹⁷The vector space of quasi-modular forms was defined in Section 0.2.3.

Part (i) of Theorem 8 is a basic balancing condition. Part (ii) is a homogeneity property which refines the statement of Theorem 3.

Having the precise weight is useful in applications. For example, by part (ii) of Theorem 8, the series $F_2^A(\tau_1(\mathbf{p}))$ is a quasi-modular form of weight 2, and hence a multiple of $E_2(\tau)$. The constant coefficient is given by

$$\int_{[\overline{M}_{2,1}(A,(1,0))]^{\text{red}}} \text{ev}_1^*(\mathbf{p})\psi_1 = \int_{[\overline{M}_{2,1}(E_1,1)]^{\text{vir}}} (-\lambda_1) \text{ev}_1^*(\omega_1)\psi_1 = -\frac{1}{12}.$$

We conclude

$$F_2^A(\tau_1(\mathbf{p})) = -\frac{1}{12}E_2(\tau) = -\frac{1}{12} + 2 \sum_{d \geq 0} \sigma(d)q^d.$$

For genus $g = 1$, both parts of Theorem 8 are easy to see. The contributions of curve classes $(1, d > 0)$ vanish for $g = 1$ since the moduli space of maps is *empty*: an element of

$$\overline{M}_{1,n}(E_1 \times E_2, (1, d > 0))$$

would yield an isogeny between E_1 and E_2 contradicting the genericity of E_1 and E_2 . The series $F_1^A(\tau_{a_1}(\gamma_1) \cdots \tau_{a_n}(\gamma_n))$ therefore has only a constant term in q . For curve classes of degree $(1, 0)$, the moduli space factors as

$$\overline{M}_{1,n}(E_1 \times E_2, (1, 0)) \cong \overline{M}_{1,n}(E_1, 1) \times E_2.$$

The balancing condition of part (i) then follows by the separate balancing on the two factors. For nonvanishing invariants

$$\left\langle \tau_{a_1}(\gamma_1) \cdots \tau_{a_n}(\gamma_n) \right\rangle_{1,(1,0)}^{A,\text{red}},$$

we must have

$$\ell = \sum_{k=1}^n v_{a_2}(\gamma_k) = 1.$$

Hence, part (ii) correctly predicts a quasi-modular form of weight

$$2(g-2) + 2\ell = 2(1-2) + 2 \cdot 1 = 0.$$

4.2. Tautological classes. The first step in the proof of Theorem 8 is to recast the result in terms of tautological classes on the moduli space of curves. For $2g - 2 + n > 0$, let

$$R^*(\overline{M}_{g,n}) \subset H^*(\overline{M}_{g,n}, \mathbb{Q})$$

be the tautological ring. Let

$$\pi : \overline{M}_{g,n}(A, \beta) \rightarrow \overline{M}_{g,n}$$

be the forgetful map. For $\alpha \in R^*(\overline{M}_{g,n})$, we define α -twisted reduced invariants of A by

$$\left\langle \alpha; \gamma_1, \dots, \gamma_n \right\rangle_{g,\beta}^{A,\text{red}} = \int_{[\overline{M}_{g,n}(A,\beta)]^{\text{red}}} \pi^*(\alpha) \cup \prod_i \text{ev}_i^*(\gamma_i).$$

Here, β is a curve class on A and

$$\gamma_1, \dots, \gamma_n \in H^*(A, \mathbb{Q})$$

are monomial classes. The associated primitive potential is defined by

$$\mathbf{F}_g^A(\alpha; \gamma_1, \dots, \gamma_n) = \sum_{d \geq 0} \left\langle \alpha; \gamma_1, \dots, \gamma_n \right\rangle_{g,(1,d)}^{A,\text{red}} q^d.$$

Proposition 3. *The primitive α -twisted potential satisfies the following properties for all $g \geq 1$:*

(i) $\mathbf{F}_g^A(\alpha; \gamma_1, \dots, \gamma_n)$ vanishes unless

$$\sum_{k=1}^n v_{\mathbf{a}_i}(\gamma_k) = \sum_{k=1}^n v_{\mathbf{b}_i}(\gamma_k), \quad i \in \{1, 2\}.$$

(ii) $\mathbf{F}_g^A(\alpha; \gamma_1, \dots, \gamma_n) \in \text{QMod}_{2(g-2)+2\ell}$ for $\ell = \sum_{k=1}^n v_{\mathbf{a}_2}(\gamma_k)$.

The cotangent line classes

$$\psi_1, \dots, \psi_n \in H^2(\overline{M}_{g,n}(A, \beta), \mathbb{Q})$$

can be expressed as pull-backs of the corresponding cotangent line classes from $\overline{M}_{g,n}$ up to boundary corrections.¹⁸ Integration over the boundary corrections is governed by the splitting formula for reduced invariants. The boundary corrections yield integrals of lower genus or fewer marked points. Arguing inductively, the descendent series $\mathbf{F}_g^A(\tau_{a_1}(\gamma_1) \dots \tau_{a_n}(\gamma_n))$ can therefore be expressed in terms of the series

$$\{\mathbf{F}_{g'}^A(\alpha'; \gamma'_1, \dots, \gamma'_{n'})\}$$

for various $\alpha', g', \gamma'_1, \dots, \gamma'_{n'}$. By a simple verification, the splitting formula preserves the vanishing and modularity statements of Theorem 8. Hence, Proposition 3 implies Theorem 8.

The balancing condition of part (i) of Proposition 3 follows easily from a Hodge theoretic argument. Alternatively, the balancing condition can be obtained inductively via the proof of part (ii) of Proposition 3.

¹⁸The unstable $g = 0$ cases do not play a role. For abelian varieties, genus 0 invariants (standard or reduced) are non-vanishing only in the constant map case where stability requires 3 special points.

4.3. Proof of Proposition 3 (i). By [57], or by a direct Mumford-Tate group calculation in case E_1 and E_2 are generic, the subring of Hodge classes on $A^n = (E_1 \times E_2)^n$,

$$\text{Hdg}^*(A^n) \subset H^*(A^n, \mathbb{Q}),$$

is generated by divisor classes.¹⁹

Hence, under the Künneth decomposition, the ring $\text{Hdg}^*(A^n)$ is generated by pull-backs of divisors classes in

$$H^2(E_i, \mathbb{Q}), \quad H^1(E_i, \mathbb{Q}) \otimes H^1(E_i, \mathbb{Q}), \quad H^1(E_1, \mathbb{Q}) \otimes H^1(E_2, \mathbb{Q}),$$

for $i = 1, 2$. We have $H^2(E_i, \mathbb{Q}) = \langle \omega_i \rangle = \langle \mathbf{a}_i \mathbf{b}_i \rangle$. By the genericity of E_1 and E_2 , all divisor classes in $H^1(E_i, \mathbb{Q}) \otimes H^1(E_i, \mathbb{Q})$ are multiples of

$$\mathbf{a}_i \otimes \mathbf{b}_i - \mathbf{b}_i \otimes \mathbf{a}_i,$$

and there are no non-zero divisor classes in $H^1(E_1, \mathbb{Q}) \otimes H^1(E_2, \mathbb{Q})$.

It follows that all classes in $\text{Hdg}^*(A^n)$ are linear combinations of

$$\delta_1 \otimes \cdots \otimes \delta_n$$

where $\delta_k \in H^*(A, \mathbb{Q})$ are monomial classes as defined in Section 4.1, such that

$$\sum_{k=1}^n v_{\mathbf{a}_i}(\delta_k) = \sum_{k=1}^n v_{\mathbf{b}_i}(\delta_k), \quad i \in \{1, 2\}.$$

Consider the evaluation map

$$\text{ev} : \overline{M}_{g,n}(A, \beta) \rightarrow A^n.$$

By the push-pull formula, we have

$$(24) \quad \left\langle \alpha; \gamma_1, \dots, \gamma_n \right\rangle_{g,(1,d)}^{A, \text{red}} = \int_{\text{ev}_*(\pi^*(\alpha) \cap [\overline{M}_{g,n}(A, \beta)]^{\text{red}})} \gamma_1 \otimes \cdots \otimes \gamma_n.$$

By the algebraicity of α and $[\overline{M}_{g,n}(A, \beta)]^{\text{red}}$, the integral (24) is zero unless

$$\sum_{k=1}^n v_{\mathbf{a}_i}(\gamma_k) = \sum_{k=1}^n v_{\mathbf{b}_i}(\gamma_k), \quad i \in \{1, 2\}. \quad \square$$

¹⁹In particular, all Hodge classes on A^n are algebraic.

4.4. Proof of Proposition 3 (ii): Base cases. We argue by induction on the pair (g, n) , where $g \geq 1$ is the genus of the source curve and $n \geq 0$ is the number of marked points. We order the pairs (g, n) lexicographically: we define $(g', n') < (g, n)$ if and only if

- $g' < g$ or
- $g' = g, n' < n$.

Base cases: $g = 1$ and $n \geq 0$.

We have already observed that Theorem 8 holds in all $g = 1$ cases. Proposition 3 holds in $g = 1$ by the same argument. We discuss the $n = 0$ and $n = 1$ cases as examples.

In case $(g, n) = (1, 0)$, the only series is

$$F_1^A(;) = 0,$$

since the reduced virtual dimension is 1 and there are no insertions.

In case $(g, n) = (1, 1)$, the moduli space $\overline{M}_{1,1}(A, (1, d))$ has reduced virtual dimension 2. We must have either $\alpha \in R^1(\overline{M}_{1,1})$ or $\tau(\mathbf{p})$ as integrands. Such an α is a multiple of the class of a point on $\overline{M}_{1,1}$. Because a generic elliptic curve does not admit a non-vanishing map to $E_1 \times E_2$, the integral vanishes. In the second case, we evaluate

$$F_1^A(1; \mathbf{p}) = \langle \tau_0(\mathbf{p}) \rangle_{1, (1, 0)}^{A, \text{red}} = 1,$$

which is a quasi-modular form of weight 0.

4.5. Proof of Proposition 3 (ii): Induction. Consider a pair (g, n) satisfying $g \geq 2$ and assume Proposition 3 is proven in *all* cases (g', n') where

$$(g', n') < (g, n).$$

Let $\gamma_1, \dots, \gamma_n \in H^*(A, \mathbb{Q})$ be monomial classes, and let $\alpha \in R^*(\overline{M}_{g,n})$ be a tautological class of pure degree. We must prove Proposition 3 holds for the series

$$(25) \quad F_g^A(\alpha; \gamma_1, \dots, \gamma_n).$$

We may assume the dimension constraint

$$(26) \quad 2g + 2n = \deg(\alpha) + \sum_{i=1}^n \deg(\gamma_i)$$

is satisfied, since the series (25) vanishes otherwise. In the dimension constraint (26), \deg denotes the *real* cohomological degree of a class (both on $\overline{M}_{g,n}$ and A).

Case (i): $\sum_{i=1}^n \deg(\gamma_i) \leq 2n$.

From dimension constraint (26), we find

$$\deg(\alpha) = 2g + 2n - \sum_i \deg(\gamma_i) \geq 2g,$$

or equivalently,

$$\alpha \in R^{\geq g}(\overline{M}_{g,n}).$$

Using the strong form of Getzler-Ionel vanishing proven in [17, Proposition 2], we can find a class

$$\tilde{\alpha} \in R^*(\partial\overline{M}_{g,n})$$

such that $\iota_*\tilde{\alpha} = \alpha$, where $\iota : \partial\overline{M}_{g,n} \rightarrow \overline{M}_{g,n}$ is the inclusion of the boundary. By the splitting formula, the series

$$\mathbf{F}_g^A(\alpha; \gamma_1, \dots, \gamma_n) = \mathbf{F}_g^A(\iota_*\tilde{\alpha}; \gamma_1, \dots, \gamma_n)$$

is expressed in terms of a linear combination of series

$$\mathbf{F}_{g'}^A(\tilde{\alpha}; \tilde{\gamma}_1, \dots, \tilde{\gamma}_{n'}) \quad \text{for which } (g', n') < (g, n).$$

The induction hypothesis for the latter implies Proposition 3 holds for $\mathbf{F}_g^A(\alpha; \gamma_1, \dots, \gamma_n)$.

Case (ii): $\sum_{i=1}^n \deg(\gamma_i) > 2n$.

Consider the moduli space

$$M_{g,n} \subset \overline{M}_{g,n}$$

of nonsingular genus $g \geq 2$ curves with n marked points. The tautological ring $R^*(M_{g,n})$ is generated by classes pulled-back from M_g via the forgetful map

$$p : M_{g,n} \rightarrow M_g$$

and the cotangent line classes

$$\psi_1, \dots, \psi_n \in H^2(M_{g,n}, \mathbb{Q}).$$

A class $\alpha \in R^*(\overline{M}_{g,n})$ can therefore be written as a sum of classes of the form:

- $\iota_*(\tilde{\alpha})$ for $\tilde{\alpha} \in R^*(\partial\overline{M}_{g,n})$,
- $\psi_1^{k_1} \cup \dots \cup \psi_n^{k_n} \cup p^*(\zeta)$ for $k_1, \dots, k_n \geq 0$ and $\zeta \in R^*(\overline{M}_g)$.

Here, we let ψ_1, \dots, ψ_n denote also the cotangent line classes on $\overline{M}_{g,n}$.

A summand of the form $\iota_*(\tilde{\alpha})$ is expressed by the splitting formula in lower order terms, see Case (i). Hence, we may assume

$$(27) \quad \alpha = \psi_1^{k_1} \cup \dots \cup \psi_n^{k_n} \cup p^*(\zeta).$$

Case (ii-a): There exists an i for which $k_i > 0$.

We assume $k_1 > 0$. If $\deg(\gamma_1) \leq 3$, we first apply the vanishing of Lemma 4 for γ_1 and

$$\gamma = \gamma_2 \otimes \dots \otimes \gamma_n.$$

Using the abelian vanishing relation (see also (20)), we find, that $F_g^A(\alpha; \gamma_1, \gamma_2, \dots, \gamma_n)$ can be expressed as a sum of series

$$\pm F_g^A(\alpha; \gamma_1 \cup \delta, \gamma'_2, \dots, \gamma'_n)$$

for various monomial classes $\delta, \gamma'_2, \dots, \gamma'_n \in H^*(A, \mathbb{Q})$ with $\deg(\delta) \geq 1$.

The above relation *increases* the degree of γ_1 . By induction on $\deg(\gamma_1)$, we may assume $\deg(\gamma_1) = 4$, or equivalently, $\gamma_1 = \mathbf{p}$.

We use next the degeneration of

$$A = E_1 \times E_2$$

to the normal cone of an elliptic fiber $E = E_2$ of the projection to E_1 ,

$$A \rightsquigarrow A \cup_E (\mathbb{P}^1 \times E).$$

We choose the point class γ_1 to lie (after degeneration) on the component $\mathbb{P}^1 \times E$. The distribution of the remaining classes $\gamma_2, \dots, \gamma_n$ can be chosen freely.

For classes $\tilde{\alpha} \in R^*(\overline{M}_{g,r})$, $\xi \in H^*(E, \mathbb{Q})$, and $\tilde{\gamma}_i$ on A and $\mathbb{P}^1 \times E$ respectively, we define

$$F_g^{A/E}(\tilde{\alpha}; \tilde{\gamma}_1, \dots, \tilde{\gamma}_r; \xi) = \sum_{d \geq 0} \left\langle \tilde{\alpha}; \prod_{i=1}^r \tau_0(\tilde{\gamma}_i) \mid \xi \right\rangle_{g,(1,d)}^{A/E, \text{red}} q^d,$$

$$F_g^{(\mathbb{P}^1 \times E)/E}(\tilde{\alpha}; \tilde{\gamma}_1, \dots, \tilde{\gamma}_r; \xi) = \sum_{d \geq 0} \left\langle \tilde{\alpha}; \prod_{i=1}^r \tau_0(\tilde{\gamma}_i) \mid \xi \right\rangle_{g,(1,d)}^{(\mathbb{P}^1 \times E)/E} q^d.$$

where we use the bracket notation defined in Section 3.5.

For $\gamma_1 = \mathbf{p}$, the degeneration formula then yields:

$$(28) \quad F_g^A(\alpha; \gamma_1, \dots, \gamma_n) = \sum_{(g', n') \leq (g, n-1)} F_{g', n'}^{A/E}(\alpha'; (\dots); \xi) \cdot F_{g'', n''}^{(\mathbb{P}^1 \times E)/E}(\alpha''; \gamma_1, (\dots); \xi^\vee).$$

The summation here is over splittings

$$g = g' + g'', \quad n = n' + n'',$$

and distributions (\dots) of the insertions $\gamma_2, \dots, \gamma_n$. The marking numbers n' and n'' are placed in the subscripts of the generating series inside the sum for clarity.²⁰ The class α determines α' and α'' by restriction. Finally, there is also a sum over all relative conditions

$$\xi \in \{1, \mathbf{a}_2, \mathbf{b}_2, \omega_2\}$$

where ξ^\vee denotes the class dual to ξ .

Lemma 9. *The primitive potential for $(\mathbb{P}^1 \times E)/E$ satisfies the following properties for all $g'' \geq 0$:*

(i) $F_{g''}^{(\mathbb{P}^1 \times E)/E}(\alpha''; \tilde{\gamma}_1, \dots, \tilde{\gamma}_{n''}; \xi^\vee)$ vanishes unless

$$v_{\mathbf{a}_2}(\xi^\vee) + \sum_{k=1}^{n''} v_{\mathbf{a}_2}(\tilde{\gamma}_k) = v_{\mathbf{b}_2}(\xi^\vee) + \sum_{k=1}^{n''} v_{\mathbf{b}_2}(\tilde{\gamma}_k).$$

(ii) $F_{g''}^{(\mathbb{P}^1 \times E)/E}(\alpha''; \tilde{\gamma}_1, \dots, \tilde{\gamma}_{n''}; \xi^\vee) \in \text{QMod}_{2g''+2\ell''-2}$ for

$$\ell'' = v_{\mathbf{a}_2}(\xi^\vee) + \sum_{k=1}^{n''} v_{\mathbf{a}_2}(\tilde{\gamma}_k).$$

Proof. Because there is only algebraic cohomology on \mathbb{P}^1 , the vanishing statement (i) follows from the fact that the virtual class is algebraic.

In [38], the relative invariants of $(\mathbb{P}^1 \times E)/E$ were effectively expressed in terms of the absolute descendent invariants of $\mathbb{P}^1 \times E$ through relations obtained by the following operations:

- degeneration of $\mathbb{P}^1 \times E$ to $\mathbb{P}^1 \times E \cup_E \mathbb{P}^1 \times E$,
- localization on the \mathbb{P}^1 factor,
- rubber calculus.

A simple verification shows the resulting relations respect modularity of the weight specified by (ii) for each of these operations. Hence, we are reduced to the case of absolute descendent invariants of $\mathbb{P}^1 \times E$.

²⁰The relative points are *not* included in the counts n' and n'' .

Then, virtual localization on the \mathbb{P}^1 -factor expresses the descendent invariants of $\mathbb{P}^1 \times E$ in terms of the descendent invariants of E . Finally, [40, Lemma 28] yields the required modularity property (ii).

For the last step, instead of localization, the product formula [2] may be used to reduce $\mathbb{P}^1 \times E$ to the case of the descendent invariants of the elliptic curve E since the the Gromov-Witten classes of \mathbb{P}^1 are known to be tautological [24]. \square

Lemma 9 controls the factor on the right inside the sum of (28). Part (ii) of Lemma 9 is a refinement of [40, Lemma 30]. However, the proof is the same as given in [40].

The factor on the left inside the sum of (28) is more difficult to control. We will consider the terms of the sum corresponding to

$$(g', n') < (g, n - 1) \quad \text{and} \quad (g', n') = (g, n - 1)$$

separately. Lemma 10 below shows how to apply the inductive hypothesis to the terms in the sum (28) with $(g', n') < (g, n - 1)$. The case $(g', n') = (g, n - 1)$ will be considered afterwards.

Lemma 10. *Let $(g', n') < (g, n - 1)$. The primitive potential for A/E satisfies the following properties:*

(i) $F_{g'}^{A/E}(\alpha'; \tilde{\gamma}_1, \dots, \tilde{\gamma}_{n'}; \xi)$ vanishes unless

$$v_{\mathbf{a}_i}(\xi) + \sum_{k=1}^{n'} v_{\mathbf{a}_i}(\tilde{\gamma}_k) = v_{\mathbf{b}_i}(\xi) + \sum_{k=1}^{n'} v_{\mathbf{b}_i}(\tilde{\gamma}_k), \quad i \in \{1, 2\}.$$

(ii) $F_{g'}^{A/E}(\alpha'; \tilde{\gamma}_1, \dots, \tilde{\gamma}_{n'}; \xi) \in \text{QMod}_{2(g'-2)+2\ell'}$ for

$$\ell' = v_{\mathbf{a}_2}(\xi) + \sum_{k=1}^{n'} v_{\mathbf{a}_2}(\tilde{\gamma}_k).$$

Proof. We apply the degeneration formula to

$$(29) \quad F_{g'}^A(\alpha'; \tilde{\gamma}_1, \dots, \tilde{\gamma}_{n'}, \omega_1 \xi)$$

with the last point degenerating to $\mathbb{P}^1 \times E$ and the specialization by pull-back for the other insertions. Since $(g', n') < (g, n - 1)$, we have

$$(g', n' + 1) < (g, n)$$

so the induction hypothesis applies to the series (29).

The degeneration formula yields a relation involving the relative geometries A/E and $(\mathbb{P}^1 \times E)/E$,

$$(30) \quad \mathbf{F}_{g'}^A(\alpha'; \tilde{\gamma}_1, \dots, \tilde{\gamma}_{n'}, \omega_1 \xi) = \sum_{(g'_o, n'_o) \leq (g', n')} \mathbf{F}_{g'_o, n'_o}^{A/E}(\alpha'_o; (\dots); \tilde{\xi}) \cdot \mathbf{F}_{g'_\bullet, n'_\bullet}^{(\mathbb{P}^1 \times E)/E}(\alpha'_\bullet; (\dots), \omega_1 \xi; \tilde{\xi}^\vee).$$

The summation here is over splittings

$$g' = g'_o + g'_\bullet, \quad n' + 1 = n'_o + n'_\bullet,$$

and distributions (\dots) of the insertions $\tilde{\gamma}_1, \dots, \tilde{\gamma}_{n'}$. The class α' determines α'_o and α'_\bullet by restriction. There is also a sum over all relative conditions $\tilde{\xi} \in \{\mathbf{1}, \mathbf{a}_2, \mathbf{b}_2, \omega_2\}$.

We now analyse the $(g'_o, n'_o) = (g', n')$ term of the sum in (30),

$$(31) \quad \mathbf{F}_{g'}^{A/E}(\alpha'; \tilde{\gamma}_1, \dots, \tilde{\gamma}_{n'}; \tilde{\xi}) \cdot \mathbf{F}_{0,1}^{(\mathbb{P}^1 \times E)/E}(\omega_1 \xi; \tilde{\xi}^\vee).$$

Since genus 0 stable maps do not represent classes of type $(1, d > 0)$ on $\mathbb{P}^1 \times E$,

$$\mathbf{F}_{0,1}^{(\mathbb{P}^1 \times E)/E}(\omega_1 \xi; \tilde{\xi}^\vee) = \langle \tilde{\xi}^\vee | \tau_0(\omega_1 \xi) \rangle_{0,(1,0)}^{(\mathbb{P}^1 \times E)/E} = \delta_{\xi, \tilde{\xi}}.$$

The second equality is obtained by the identification of the moduli space of maps by the location of the relative point,

$$(32) \quad \overline{M}_{0,0}((\mathbb{P}^1 \times E)/E, (1, 0)) \cong E.$$

Taken together, we can rewrite (31) as simply

$$\mathbf{F}_{g'}^{A/E}(\alpha'; \tilde{\gamma}_1, \dots, \tilde{\gamma}_{n'}; \xi).$$

We find the series \mathbf{F}^A for the absolute geometry can be expressed in terms of the series $\mathbf{F}^{A/E}$ for the relative geometry by a transformation matrix \mathbf{M} which is upper triangular with 1's on the diagonal. By Lemma 9, the off-diagonal terms of \mathbf{M} are given by quasi-modular forms. By inverting the unipotent matrix \mathbf{M} and applying the induction hypothesis to \mathbf{F}^A , we find that the relative invariants $\mathbf{F}^{A/E}$ are quasi-modular forms.

The weight and vanishing statement can now be deduced from a careful consideration of the entries of \mathbf{M}^{-1} . Alternatively, we may argue via a (second) induction on (g', n') . In case $(g', n') = (1, 1)$, there are no lower order terms in (30), and we are done. If the statement is true for all $(g'_o, n'_o) < (g', n')$, then the statement follows directly from (30) and the induction hypothesis. \square

We now turn to the $(g', n') = (g, n - 1)$ term in the sum (28):

$$\mathbf{F}_{g, n-1}^{A/E}(\alpha; \gamma_2, \dots, \gamma_n; \omega) \cdot \mathbf{F}_{0,1}^{(\mathbb{P}^1 \times E)/E}(\gamma_1; \mathbf{1})$$

As we have seen above, only curves in class $(1, 0)$ contribute to the series $\mathbf{F}_{0,1}^{(\mathbb{P}^1 \times E)/E}(\gamma_1; \mathbf{1})$. By the identification of the moduli space (32),

$$\mathbf{F}_{0,1}^{(\mathbb{P}^1 \times E)/E}(\gamma_1; \mathbf{1}) = \langle \mathbf{1} \mid \tau_0(\mathbf{p}) \rangle_{0,(1,0)}^{(\mathbb{P}^1 \times E)/E} = 1.$$

Hence, the $(g', n') = (g, n - 1)$ term is

$$(33) \quad \mathbf{F}_{g,n-1}^{A/E}(\alpha; \gamma_2, \dots, \gamma_n; \omega),$$

where the class $\alpha \in R^*(\overline{M}_{g,n})$ is pulled-back to $\overline{M}_{g,n-1}(A/E, (1, d))$ via the map

$$\pi : \overline{M}_{g,n-1}(A/E, (1, d)) \rightarrow \overline{M}_{g,n}$$

which takes the *relative* point on the left to the marking 1 on the right.

We must prove the induction hypothesis implies

(i) $\mathbf{F}_{g,n-1}^{A/E}(\alpha; \gamma_2, \dots, \gamma_n; \omega)$ vanishes unless

$$v_{\mathbf{a}_i}(\xi) + \sum_{k=2}^n v_{\mathbf{a}_i}(\gamma_k) = v_{\mathbf{b}_i}(\xi) + \sum_{k=2}^n v_{\mathbf{b}_i}(\gamma_k), \quad i \in \{1, 2\}.$$

(ii) $\mathbf{F}_{g,n-1}^{A/E}(\alpha; \gamma_2, \dots, \gamma_n; \omega) \in \text{QMod}_{2(g-2)+2\ell}$ for

$$\ell = v_{\mathbf{a}_2}(\xi) + \sum_{k=2}^n v_{\mathbf{a}_2}(\gamma_k).$$

We proceed by studying the cotangent lines. Let

$$L_{\text{rel}} \rightarrow \overline{M}_{g,n-1}(A/E, (1, d)), \quad L_1 \rightarrow \overline{M}_{g,n}$$

denote the respective cotangent lines at the relative point and the first marking.

Lemma 11. *After pull-back via π , we have an isomorphism*

$$L_{\text{rel}} \cong \pi^* L_1$$

on $\overline{M}_{g,n-1}(A/E, (1, d))$.

Proof. Let C be the n -pointed domain of a map

$$f : C \rightarrow \tilde{A}$$

parameterized by the moduli space $\overline{M}_{g,n-1}(A/E, (1, d))$. The n points consist of the relative point together with the $n - 1$ standard markings. The target \tilde{A} is a possible accordian destabilization of A along E . The Lemma is a consequence of the following claim: *the n -pointed curve C is Deligne-Mumford stable.*

Since $g \geq 1$ and $n \geq 1$, to prove the stability of the n -pointed curve C , we need only consider the nonsingular rational components $P \subset C$:

- If $f(P) \subset A$, then f is constant on P ,

$$f(P) \in A \setminus E,$$

and P must carry at least 3 special points by the definition of map stability.

- If $f(P)$ is contained in a rubber bubble over E , P is mapped to a point of E and therefore must map to a fiber of the bubble. Stability of the bubble then requires the existence of at least 3 special points of P .

Since the n -pointed curve C is stable, there is no contraction of components associated to the map π . Hence, the cotangent lines are isomorphic. \square

The relative divisor $E \subset A$ is the fiber over a point $0_{E_1} \in E_1$. Let

$$f : C \rightarrow \tilde{A}$$

be a stable map parameterized by the moduli space $\overline{M}_{g,n-1}(A/E, (1, d))$, and let $p_{\text{rel}} \in C$ be the relative point. Composition of the canonical projections

$$\epsilon : \tilde{A} \rightarrow A \rightarrow E_1$$

yields a map

$$\epsilon f : C \rightarrow E_1 \quad \text{with} \quad \epsilon f(p_{\text{rel}}) = 0_{E_1}.$$

The cotangent line L_{rel} carries a canonical section via the differential of ϵf ,

$$s : \mathbb{C} = T_{0_{E_1}}^*(E_1) \rightarrow L_{\text{rel}}.$$

The vanishing locus²¹ of the section s is the boundary of moduli space $\overline{M}_{g,n-1}(A/E, (1, d))$ corresponding to the first bubble over E .

Since α is of the form (27) with $k_1 > 0$, a factor $\psi_1 = c_1(L_1)$ can be extracted from α ,

$$\alpha = \psi_1 \cdot \tilde{\alpha}.$$

After pull-back via π , we have

$$\pi^*(\psi_1) = c_1(L_{\text{rel}})$$

by Lemma 11. Via the vanishing locus of the section s , we obtain the following equation for the series (33):

²¹The geometry is pulled-back from the Artin stack of degenerations of A/E .

$$(34) \quad \mathbb{F}_{g,n-1}^{A/E}(\alpha; \gamma_2, \dots, \gamma_n; \omega) = \sum_{(g',n') < (g,n-1)} \mathbb{F}_{g',n'}^{A/E}(\tilde{\alpha}'; (\dots); \xi) \cdot \mathbb{F}_{g'',n''}^{\text{Rub}(\mathbb{P}^1 \times E)}(\tilde{\alpha}''; (\dots); \xi^\vee, \omega).$$

The summation here is over splittings

$$g = g' + g'', \quad n - 1 = n' + n'',$$

and distributions (\dots) of the insertions $\gamma_2, \dots, \gamma_n$. Only insertions γ_i satisfying

$$v_{\mathbf{a}_1}(\gamma_i) = v_{\mathbf{b}_1}(\gamma_i) = 0$$

can be distributed to the rubber series

$$\mathbb{F}_{g'',n''}^{\text{Rub}(\mathbb{P}^1 \times E)}(\tilde{\alpha}''; (\dots); \xi^\vee, \omega) = \sum_{d \geq 0} \left\langle \xi^\vee \mid \tilde{\alpha}''; (\dots) \mid \omega \right\rangle_{g'',(1,d)}^{\text{Rub}(\mathbb{P}^1 \times E)} q^d.$$

By stability of the rubber, either $g'' > 0$ or $n'' > 0$. The class $\tilde{\alpha}$ determines $\tilde{\alpha}'$ and $\tilde{\alpha}''$ by restriction. Finally, there is also a sum on the right side of (34) over relative conditions ξ .

In the sum on the right side of (34), the balancing and modularity of the first factor

$$\mathbb{F}_{g',n'}^{A/E}(\tilde{\alpha}'; (\dots); \xi)$$

is obtained from Lemma 10. The balancing and modularity of the rubber factor

$$\mathbb{F}_{g'',n''}^{\text{Rub}(\mathbb{P}^1 \times E)}(\tilde{\alpha}''; (\dots); \xi^\vee, \omega)$$

follows from the rubber calculus and an argument parallel to the proof of Lemma 9.²² The results together imply the required balancing and modularity for the series (33).

We now control the balancing and modularity of all terms in the sum on the right of (28). As a consequence, Proposition 3 holds for

$$\mathbb{F}_g^A(\alpha; \gamma_1, \dots, \gamma_n).$$

The proof of the induction step for Case (ii-a) is complete.

Case (ii-b): $\alpha = p^*(\zeta)$ for some $\zeta \in R^*(\overline{M}_g)$.

We may assume γ_1 is of minimal degree:

$$\deg(\gamma_1) \leq \deg(\gamma_i) \quad \text{for all } i \in \{2, \dots, n\}.$$

Below, we will distinguish several subcases depending upon $\deg(\gamma_1)$.

²²We leave the details here to the reader.

Consider the map $\overline{M}_{g,n}(A, (1, d)) \rightarrow \overline{M}_{g,n-1}(A, (1, d))$ forgetting the first marking. The coefficients of the series

$$(35) \quad \mathbb{F}_g^A(p^*(\zeta); \gamma_1, \dots, \gamma_n)$$

are integrals where all classes in the integrand, except for $\text{ev}_1^*(\gamma_1)$, are pull-backs via the map forgetting the first marking.

Case $\deg(\gamma_1) \leq 1$. The series (35) vanishes by the push-pull formula since the fiber of the forgetful map has (complex) dimension 1.

Case $\deg(\gamma_1) = 2$. We use the divisor equation for γ_1 and find

$$\mathbb{F}_g^A(p^*(\zeta); \gamma_1, \dots, \gamma_n) = \begin{cases} \mathbb{F}_g^A(p^*(\zeta); \gamma_2, \dots, \gamma_n) & \text{if } \gamma_1 = \mathbf{a}_1 \mathbf{b}_1 \\ q \frac{d}{dq} \mathbb{F}_g^A(p^*(\zeta); \gamma_2, \dots, \gamma_n) & \text{if } \gamma_1 = \mathbf{a}_2 \mathbf{b}_2 \\ 0 & \text{otherwise.} \end{cases}$$

Because the differential operator

$$q \frac{d}{dq} = \frac{1}{2\pi i} \frac{\partial}{\partial \tau}$$

preserves QMod_* and is homogeneous of degree 2, Proposition 3 holds for (35) by the induction hypothesis.

Case $\deg(\gamma_1) = 3$. Since $\sum_i \deg(\gamma_i)$ is even, we must have $n \geq 2$. We order the classes

$$\gamma_2, \dots, \gamma_n$$

so that $\gamma_2, \dots, \gamma_k$ are point classes and $\gamma_{k+1}, \dots, \gamma_n$ are classes of degree 3, for some $1 \leq k < n$.

We will use the abelian vanishing of Lemma 4 for γ_1 and

$$\gamma = \gamma_2 \otimes \cdots \otimes \gamma_n.$$

Let $s \in \{\mathbf{a}_1, \mathbf{b}_1, \mathbf{a}_2, \mathbf{b}_2\}$ be the factor with $v_s(\gamma_1) = 0$. Using the abelian vanishing relation, we find

$$\begin{aligned} \sum_{i=1}^k \mathbb{F}_g^A(p^*(\zeta); \underbrace{\mathbf{p}, \dots, \mathbf{p}}_{i-1}, \gamma_1, \underbrace{\mathbf{p}, \dots, \mathbf{p}}_{k-i}, \gamma_{k+1}, \dots, \gamma_n) \\ = \sum_{\substack{i=k+1 \\ v_s(\gamma_i)=1}}^n \pm \mathbb{F}_g^A(p^*(\zeta); \mathbf{p}, \gamma_2, \dots, \tilde{\gamma}_i, \dots, \gamma_n), \end{aligned}$$

where $\tilde{\gamma}_i = \gamma_i/s$ denotes the class γ_i with the factor s removed. The plus signs in the terms on the left hand side require a careful accounting of the signs. Since the class $p^*(\zeta)$ is symmetric with respect to

interchanging markings, the above equation simplifies to

$$k \cdot \mathbf{F}_g^A(p^*(\zeta); \gamma_1, \dots, \gamma_n) = \sum_{\substack{i=k+1 \\ v_s(\gamma_i)=1}}^n \pm \mathbf{F}_g^A(p^*(\zeta); \mathbf{p}, \gamma_2, \dots, \tilde{\gamma}_i, \dots, \gamma_n),$$

Since $\tilde{\gamma}_i$ is of degree 2, we may apply the divisor equation to each summand on the right side. As result, the right side is reduce to terms of lower order, see Case $\deg(\gamma_1) = 2$ above. By the induction hypothesis, Proposition 3 holds for (35).

Case $\deg(\gamma_1) = 4$. All the insertions $\gamma_1, \dots, \gamma_n$ must be point classes. If $n = 1$, the dimension constraint (26) implies $\deg(\alpha) = 2g - 2$ and hence

$$\zeta \in R^{g-1}(\overline{M}_g)$$

Using the strong form of Looijenga's vanishing

$$R^{\geq g-1}(M_g) = 0$$

proven in [17, Proposition 2], there exists a class

$$\tilde{\zeta} \in R^*(\partial\overline{M}_g)$$

such that $\iota_*\tilde{\zeta} = \zeta$. After pulling back via

$$p : \overline{M}_{g,n} \rightarrow \overline{M}_g,$$

$p^*(\zeta)$ can be written as the push forward of a tautological class on the boundary $\partial\overline{M}_{g,n}$. Proposition 3 holds for (35) by the splitting formula and the induction hypothesis, see Case (i).

If $n \geq 2$, we use the degeneration

$$A \rightsquigarrow A \cup_E (\mathbb{P}^1 \times E),$$

which already appeared in Case (ii-a) above. We choose the point classes γ_1 and γ_2 to lie after degeneration on the component $\mathbb{P}^1 \times E$.

The degeneration formula then yields:

$$(36) \quad \mathbf{F}_g^A(\alpha; \gamma_1, \dots, \gamma_n) = \sum_{(g',n') \leq (g,n)} \mathbf{F}_{g',n'}^{A/E}(\alpha'; (\dots); \xi) \cdot \mathbf{F}_{g'',n''}^{(\mathbb{P}^1 \times E)/E}(\alpha''; \gamma_1, \gamma_2, (\dots); \xi^\vee),$$

where the sum is as in (28).

If $g' = g$ in the sum (36), then the second factor is

$$(37) \quad \mathbf{F}_{0,n''}^{(\mathbb{P}^1 \times E)/E}(\alpha''; \gamma_1, \gamma_2, (\dots); \xi^\vee).$$

Genus 0 stable maps do not represent classes of type $(1, d > 0)$ on $\mathbb{P}^1 \times E$, hence only the curve class $(1, 0)$ need be considered. Since there are no curves of type $(1, 0)$ through two general points of $\mathbb{P}^1 \times E$, (37) vanishes. As a result, only $g' < g$ terms appear in the sum (36). Proposition 3 holds for (35) by Lemmas 9 and 10.

The proof of the induction step has now been established in all cases. The proof of Proposition 3 is complete. \square

4.6. $K3$ surfaces. Theorem 3 of Section 0.2.3 for abelian surfaces is exactly parallel to the modularity results [40, Theorem 4 and Proposition 29] for the primitive descendent potential for $K3$ surfaces. Though the argument for abelian surfaces is more difficult because of the presence of odd cohomology, several aspects are similar.

The refined modularity of Theorem 8 for abelian surfaces is strictly stronger than the statements of [40] for $K3$ surfaces. In fact, the proof of [40] also yields the parallel refined statement for $K3$ surfaces. The crucial point is to use the refined modularity of Lemma 9 part (ii) instead of the weaker modularity of [40, Lemma 30]. We state the refined modularity for $K3$ surfaces below following the notation of [40].

Let S be a nonsingular, projective, elliptically fibered $K3$ surface,

$$S \rightarrow \mathbb{P}^1,$$

with a section. Let $\mathbf{s}, \mathbf{f} \in H_2(S, \mathbb{Z})$ be the section and fiber class. The primitive descendent potential for the reduced Gromov-Witten theory of S is defined by

$$F_g^S(\tau_{a_1}(\gamma_1) \cdots \tau_{a_n}(\gamma_n)) = \sum_{d \geq 0} \left\langle \tau_{a_1}(\gamma_1) \cdots \tau_{a_n}(\gamma_n) \right\rangle_{g, \mathbf{s} + d\mathbf{f}}^{S, \text{red}} q^{d-1}$$

for $g \geq 0$.

We define a new degree function $\underline{\text{deg}}(\gamma)$ for classes $\gamma \in H^*(S, \mathbb{Q})$ by the following rules:

- $\gamma \in H^0(S, \mathbb{Q}) \mapsto \underline{\text{deg}}(\gamma) = 0,$
- $\gamma \in H^4(S, \mathbb{Q}) \mapsto \underline{\text{deg}}(\gamma) = 2.$

For classes $\gamma \in H^2(S, \mathbb{Q})$, the degree is more subtle.

Viewing the section and fiber classes also as elements of cohomology, we define

$$V = \mathbb{Q}\mathbf{s} \oplus \mathbb{Q}\mathbf{f} \subset H^2(S, \mathbb{Q}).$$

We have a direct sum decomposition

$$(38) \quad \mathbb{Q}\mathfrak{f} \oplus V^\perp \oplus \mathbb{Q}(\mathfrak{s} + \mathfrak{f}) \cong H^2(S, \mathbb{Q})$$

where V^\perp is defined with respect to the intersection form. We consider only classes $\gamma \in H^2(S, \mathbb{Q})$ which are pure with respect to the decomposition (38). Then,

- $\gamma \in \mathbb{Q}\mathfrak{f} \mapsto \underline{\deg}(\gamma) = 0$,
- $\gamma \in V^\perp \mapsto \underline{\deg}(\gamma) = 1$,
- $\gamma \in \mathbb{Q}(\mathfrak{s} + \mathfrak{f}) \mapsto \underline{\deg}(\gamma) = 2$.

The modularity of [40, Theorem 4 and Proposition 29] is refined by the following result.

Theorem 9. *For $\underline{\deg}$ -homogeneous classes $\gamma_i \in H^*(S, \mathbb{Q})$,*

$$F_g^S(\tau_{a_1}(\gamma_1) \cdots \tau_{a_n}(\gamma_n)) \in \frac{1}{\Delta(q)} \mathbb{Q}\text{Mod}_\ell$$

for $\ell = 2g + \sum_{i=1}^n \underline{\deg}(\gamma_i)$.

The discriminant modular form entering in Theorem 9 is

$$\Delta(q) = q \prod_{n=1}^{\infty} (1 - q^n)^{24}.$$

5. HYPERELLIPTIC CURVES

5.1. Overview. The correspondence between hyperelliptic curves on a surface S and rational curves in $\text{Hilb}^2(S)$ has been used often to enumerative hyperelliptic curves on S , see [23] for $S = \mathbb{P}^2$ and [50] for $S = \mathbb{P}^1 \times \mathbb{P}^1$. The main difficulty in applying the correspondence is the need of a non-degeneracy result concerning curves in $\mathbb{P}^1 \times S$. For abelian surfaces, the required non-degeneracy, stated as (\dagger) in Section 0.2.4, is expected to hold generically, but is not known in most cases. The above correspondence then yields only conditional or virtual results on the number of hyperelliptic curves on an abelian surface, as pursued, for example, by S. Rose in [53].

We proceed with our study of hyperelliptic curves in three steps. In Section 5.2, we provide several equivalent descriptions of (\dagger) and a proof in genus 2 for a generic abelian surface. In Section 5.3, we prove an unconditional formula for the first non-trivial case of genus 3 hyperelliptic curves via explicit Gromov-Witten integrals, a boundary analysis, and the genus 2 result proven in Section 5.2.

In Section 5.4, we assume the existence of abelian surfaces A and irreducible curve classes β satisfying property (\dagger) in all genera. Employing the correspondence above, we find a closed formula for the $h_{g,\beta}^{A,\text{FLS}}$. While a similar strategy has been used in [53] assuming the crepant resolution conjecture, our closed formula is new. Together with the strong modularity result of Theorem 8, we obtain a formula for the Gromov-Witten numbers $H_{g,(1,d)}^{\text{FLS}}$ which agrees with the genus 3 counts.

5.2. Non-degeneracy for abelian surfaces. We briefly recall the correspondences between hyperelliptic curves in S , curves in $\mathbb{P}^1 \times S$, and rational curves in $\text{Hilb}^2(S)$. For simplicity, we restrict to the case of abelian surfaces $S = A$, see [19, 23, 41] for the general case.

Let A be an abelian surface, and let

$$f : C \rightarrow A$$

be a map from a nonsingular hyperelliptic curve. Let

$$p : C \rightarrow \mathbb{P}^1$$

be the double cover. Since A contains no rational curves, f does not factor through p . Consider the map

$$(p, f) : C \rightarrow \mathbb{P}^1 \times A.$$

The image $\bar{C} = \text{Im}(C) \subset \mathbb{P}^1 \times A$ is an irreducible curve, (flat) of degree 2 over \mathbb{P}^1 , and has normalization $C \rightarrow \bar{C}$.

Let $\text{Hilb}^2(A)$ be the Hilbert scheme of 2 points of A , and let

$$\Delta \subset \text{Hilb}^2(A)$$

denote the subvariety parameterizing non-reduced length 2 subschemes of A . By the universal property of the Hilbert scheme, the curve \bar{C} induces a map

$$\phi : \mathbb{P}^1 \rightarrow \text{Hilb}^2(A)$$

such that the image is not contained in Δ .

Conversely, let $\phi : \mathbb{P}^1 \rightarrow \text{Hilb}^2(A)$ be a map whose image is not contained in Δ . Since A contains no rational curves, by pulling back the universal family

$$Z \subset \text{Hilb}^2(A) \times A,$$

we obtain an irreducible curve $\bar{C} \subset \mathbb{P}^1 \times A$ of degree 2 over \mathbb{P}^1 . The normalization $C \rightarrow \bar{C}$ is hyperelliptic and induces a map $f : C \rightarrow A$.

Hence, there are bijective correspondences between

- maps $f : C \rightarrow A$ from nonsingular hyperelliptic curves,
- irreducible curves $\bar{C} \subset \mathbb{P}^1 \times A$ of degree 2 over \mathbb{P}^1 ,
- maps $\phi : \mathbb{P}^1 \rightarrow \text{Hilb}^2(A)$ with image not contained in Δ .

The correspondences allow us to reformulate the non-degeneracy property (\dagger) .

Lemma 12 (Graber [23]). *Under the correspondences above, the followings are equivalent.*

- (i) *The differential of f is injective at the Weierstrass points of C , and no conjugate non-Weierstrass points are mapped to the same point on A .*
- (ii) *The curve \bar{C} is nonsingular.*
- (iii) *The map ϕ meets Δ transversally.*

Using a recent result of Poonen and Stoll [51], we verify that property (\dagger) holds generically in genus 2:

Lemma 13. *Let A be a generic abelian surface with a curve class β of type $(1, d)$, and let $f : C \rightarrow A$ be a map from a nonsingular genus 2 curve in class β . Then $f : C \rightarrow A$ satisfies condition (i) of Lemma 12.*

Proof. The condition on the differential of f is automatically satisfied by [32, Proposition 2.2] for genus 2 curves on abelian surfaces.

Now suppose there exists a nonsingular genus 2 curve C , two conjugate non-Weierstrass points $x, y \in C$, and a map $f : C \rightarrow A$ in class β such that $f(x) = f(y)$. Up to translation we may assume that f maps a Weierstrass point $q \in C$ to $0_A \in A$. Then f factors as

$$C \xrightarrow{\text{aj}} J \xrightarrow{\pi} A,$$

where J is the Jacobian of C and aj is the Abel-Jacobi map with respect to q . The hyperelliptic involution of C corresponds to the automorphisms -1 of J and A . For x, y conjugate, this implies that $f(x) = f(y)$ is a 2-torsion point on A .

Since C is of genus 2 and β is of type $(1, d)$, the map π is an isogeny of degree d . It follows that both $\text{aj}(x)$ and $\text{aj}(y)$ are $2d$ -torsions on J .

In genus 2, the assumption that A is generic implies C is generic. However, by [51, Theorem 7.1], a generic (Weierstrass-pointed) hyperelliptic curve C meets the torsions of J only at the Weierstrass points. Hence the points x, y do not exist. \square

The proof of Lemma 13 works for any type (d_1, d_2) with $d_1, d_2 > 0$. However, since multiple covered curves may arise, statement (\dagger) is false for imprimitive classes in higher genus. The most basic counterexample is constructed by taking an étale double cover

$$C_3 \rightarrow C_2$$

of a nonsingular genus 2 curve $C_2 \subset A$. Then, C_3 is nonsingular and hyperelliptic of genus 3, but C_2 contains a Weierstrass point whose preimage in C_3 is a pair of conjugate non-Weierstrass points.

Furthermore, by the proof of [30, Theorem 1.6], for generic A and β of type $(1, d)$, property (\dagger) also holds in the maximal geometric genus g_d . The value of g_d is determined by the inequality (5). It is also shown that for every $g \in \{2, \dots, g_d\}$, there exists at least one nonsingular genus g curve in $\mathbb{P}^1 \times A$ of class $(2, \beta)$.

5.3. Genus 3 hyperelliptic counts. We prove here Proposition 1. We proceed in two steps. First, we evaluate $\mathbf{H}_{3,(1,d)}^{\text{FLS}}$. Then we identify the contributions from the boundary of the moduli space.

Lemma 14. *For all $d \geq 1$,*

$$\mathbf{H}_{3,(1,d)}^{\text{FLS}} = d^2 \sum_{m|d} \frac{3m^2 - 4dm}{4}.$$

Proof. On $\overline{\mathcal{M}}_3$, let λ_1 be the first Chern class of the Hodge bundle, δ_0 the class of the curve with a nonseparating node, and δ_1 the class of curves with a separating node. By [26],

$$\mathcal{H}_3 = 9\lambda_1 - \delta_0 - 3\delta_1.$$

The Lemma will be proven by the following three evaluations

$$\langle \lambda_1 \rangle_{3,(1,d)}^{A,\text{FLS}} = \frac{d^2}{12} \sum_{m|d} m^3, \quad \langle \delta_0 \rangle_{3,(1,d)}^{A,\text{FLS}} = d^3 \sum_{m|d} m, \quad \langle \delta_1 \rangle_{3,(1,d)}^{A,\text{FLS}} = 0.$$

The first equation follows directly from Theorem 1. For the second, we have

$$\langle \delta_0 \rangle_{3,(1,d)}^{A,\text{FLS}} = \frac{1}{2} \langle \tau_0(\Delta) \rangle_{2,(1,d)}^{A,\text{FLS}} = \frac{1}{2} \cdot 2d \cdot \langle \mathbf{1} \rangle_{2,(1,d)}^{A,\text{FLS}} = d \cdot d^2 \sum_{m|d} m,$$

where Δ denotes the class of the diagonal in $A \times A$. The divisor δ_1 is associated to the locus of curves which split into genus 1 and genus 2 components. Since generically A contains no genus 1 curves, the class on the genus 1 component must be 0. Since $[\overline{\mathcal{M}}_{1,1}(A, 0)]^{\text{vir}} = 0$, we obtain the third evaluation. \square

Proof of Proposition 1. Let A and β be generic. By Lemma 13 the only contribution to $\mathbf{H}_{g,(1,d)}^{\text{FLS}}$ from maps $f : C \rightarrow A$ with C nodal arises from the locus in \overline{M}_3 with a separating node. The space of these maps are of the form

$$f : B \cup C' \rightarrow A$$

where B is a genus 2 curve and C' is an elliptic tail glued to B along one of the 6 Weierstrass points of B . Under f , the curve B maps to a genus 2 curve in A , while C' gets contracted. By a direct calculation (or examining the case $d = 1$), we find that each genus 2 curve in the FLS contributes

$$6 \cdot \frac{1}{2} \int_{\overline{M}_{1,1}} c_1(\text{Ob}) = -\frac{1}{4},$$

where Ob denotes the obstruction sheaf. Therefore,

$$\mathbf{h}_{3,\beta}^{A,\text{FLS}} = \mathbf{H}_{3,(1,d)}^{\text{FLS}} + d^2 \sigma(d) \cdot \frac{1}{4} = d^2 \sum_{m|d} \frac{m(3m^2 + 1 - 4d)}{4}. \quad \square$$

5.4. A formula for all genera. Consider the composition

$$(39) \quad \text{Hilb}^2(A) \rightarrow \text{Sym}^2(A) \rightarrow A,$$

of the Hilbert-Chow morphism and the addition map. The fiber of $0_A \in A$ is the Kummer $K3$ surface of A , denoted $\text{Km}(A)$. Alternatively, $\text{Km}(A)$ can be defined as the blowup of $A/\pm 1$ at the 16 singular points.

In the notation of Section 5.2, a map

$$\phi : \mathbb{P}^1 \rightarrow \text{Hilb}^2(A)$$

not contained in Δ maps to $\text{Km}(A)$ if and only if the corresponding hyperelliptic curve $f : C \rightarrow A$ maps a Weierstrass point of C to a 2-torsion point of A .

By Nakajima's theorem on the cohomology of Hilbert schemes, we have a natural decomposition

$$H_2(\text{Hilb}^2(A); \mathbb{Z}) = H_2(A, \mathbb{Z}) \oplus \wedge^2 H_1(A, \mathbb{Z}) \oplus \mathbb{Z} \cdot X,$$

where X is the class of an exceptional curve.

A hyperelliptic curve $f : C \rightarrow A$ in class β corresponds to a map $\phi : \mathbb{P}^1 \rightarrow \text{Hilb}^2(A)$ not contained in Δ , which has class

$$\beta + \gamma + kX \in H_2(\text{Hilb}^2(A), \mathbb{Z})$$

for some $\gamma \in \wedge^2 H_1(A, \mathbb{Z})$ and with

$$k = \chi(\mathcal{O}_{\bar{C}}) - 2 = -1 - g_a(\bar{C}),$$

where $g_a(\bar{C})$ is the arithmetic genus of \bar{C} , see [41, Section 1.2].

Proposition 4. *Let β be an irreducible curve class of type $(1, d)$ on an abelian surface A satisfying (\dagger) . Then, after the change of variables $y = -e^{2\pi iz}$ and $q = e^{2\pi i\tau}$,*

$$\sum_{g \geq 2} h_{g,\beta}^{A,\text{FLS}} (y^{1/2} + y^{-1/2})^{2g+2} = \frac{d^2}{16} \text{Coeff}_{q^d} [4K(z, \tau)^4],$$

where Coeff_{q^d} denotes the coefficient of q^d .

Proof. For every hyperelliptic curve $f : C \rightarrow A$ in class β , the map

$$(p, f) : C \rightarrow \bar{C}$$

is an isomorphism by (\dagger) . In particular, the arithmetic genus of \bar{C} is equal to the genus of C .

Hence, there is a bijective correspondence between

- (i) maps $f : C \rightarrow A$ from nonsingular hyperelliptic curves of genus g and class β for which a Weierstrass point of C is mapped to a 2-torsion point of A ,
- (ii) maps $\phi : \mathbb{P}^1 \rightarrow \text{Hilb}^2(A)$ with image not contained in Δ of class

$$\beta + \gamma - (g + 1)X$$

for some $\gamma \in \wedge^2 H_1(A, \mathbb{Z})$ and with image in $\text{Km}(A)$.

Let $h_{g,\beta}^{A,\text{Hilb}}$ be the finite number of such curves.

In every translation class of a hyperelliptic curve $f : C \rightarrow A$ in class β , there are d^2 members (up to automorphisms) in a given fixed linear system, and 16 members (up to automorphisms) with a Weierstrass point of C mapping to a 2-torsion point. Hence

$$h_{g,\beta}^{A,\text{FLS}} = \frac{d^2}{16} h_{g,\beta}^{A,\text{Hilb}}.$$

By assumption (\dagger) and Lemma 12, every map $\phi : \mathbb{P}^1 \rightarrow \text{Hilb}^2(A)$ as in (ii) meets Δ transversely and is isolated. In this situation, Graber in [23, Sections 2 and 3] has explicitly determined the relationship between the genus 0 Gromov-Witten invariants of $\text{Hilb}^2(A)$ and the number of these rational curves.

Let $p : \bar{M}_0(\text{Hilb}^2(A)) \rightarrow A$ be the map induced by (39). Then,

$$\sum_{g \geq 0} h_{g,\beta}^{A,\text{Hilb}} (y^{1/2} + y^{-1/2})^{2g+2} =$$

$$\sum_{k \in \mathbb{Z}} \sum_{\gamma \in \wedge^2 H_1(A, \mathbb{Z})} y^k \int_{[\overline{M}_0(\text{Hilb}^2(A), \beta + \gamma + kA)]^{\text{red}}} p^*(0_A).$$

The integral on the right hand side reduces to the genus 0 invariants of the Kummer $K3$ surfaces and is determined by the Yau-Zaslow formula. Direct calculations and theta function identities, see [41] for details, then provide the closed evaluation

$$\sum_{\substack{k \in \mathbb{Z} \\ \gamma \in \wedge^2 H_1(A, \mathbb{Z})}} y^k \int_{[\overline{M}_0(\text{Hilb}^2(A), \beta + \gamma + kA)]^{\text{red}}} p^*(0_A) = \text{Coeff}_{q^d} [4K(z, \tau)^4]. \quad \square$$

We are now ready to prove Theorem 4.

Proof of Theorem 4. Let β be an irreducible class of type $(1, d)$ on an abelian surface A satisfying (\dagger) . The only contribution to $\mathbf{H}_{g, (1, d)}^{\text{FLS}}$ from maps $f : C \rightarrow A$ with C nodal are of the form

$$(40) \quad f : B \cup C_1 \cup \cdots \cup C_{2h+2} \rightarrow A$$

where:

- $f : B \rightarrow A$ is a map in class β from a nonsingular hyperelliptic curve B of some genus $h < g$,
- the C_i are pairwise disjoint curves, that are glued to the i -th Weierstrass point x_i of B , and are contracted under f ,
- the genera g_i of C_i satisfy $h + g_1 + \cdots + g_{2h+2} = g$,
- if $g_i \geq 2$, then C_i is a hyperelliptic curve and x_i is a Weierstrass point of C_i .

By stability, the case $g_i = 0$ does not appear.

For $g \geq 2$, let

$$\mathcal{H}_{g,1} \in A^{g-1}(\overline{M}_{g,1})$$

be the stack fundamental class of the closure of nonsingular hyperelliptic curves with marked point at a Weierstrass point. By convention, we set

$$\mathcal{H}_{1,1} = \frac{1}{2}[\overline{M}_{1,1}].$$

Then, the contribution of a nonsingular hyperelliptic curve $f : B \rightarrow A$ of genus h in class β to $\mathbf{H}_{g, (1, d)}^{\text{FLS}}$ is

$$(41) \quad \sum_{\substack{g_1, \dots, g_{2h+2} \geq 0 \\ g_1 + \dots + g_{2h+2} = g - h}} \prod_{\substack{i=1 \\ g_i > 0}}^{2h+2} \int_{\overline{M}_{g_i,1}} \mathcal{H}_{g_i,1} \cup c(\text{Ob}).$$

where Ob denotes the obstruction sheaf. Analyzing the tangent obstruction sequence, we obtain

$$c(\text{Ob}) = \frac{c(\mathbb{E}^\vee)^2}{1 - \psi_1}.$$

Define the generating series

$$F(u) = u + \sum_{g \geq 1} u^{2g+1} \int_{\overline{M}_{g,1}} \frac{\mathcal{H}_{g,1} \cup c(\mathbb{E}^\vee)^2}{1 - \psi_1},$$

Then from relation (41) and the definition of $\mathbf{h}_{g,\beta}^{A,\text{FLS}}$, we obtain

$$\sum_{h \geq 2} \mathbf{h}_{h,\beta}^{A,\text{FLS}} F(u)^{2h+2} = \sum_{g \geq 2} \mathbf{H}_{g,(1,d)}^{\text{FLS}} u^{2g+2}.$$

The series $F(u)$ has been computed by J. Wise using orbifold Gromov-Witten theory [58]. The result is

$$F(u) = 2 \sin(u/2) = u - \frac{1}{24}u^3 + \frac{1}{1920}u^5 \pm \dots$$

Together with Proposition 4, the claim follows. □

The calculation of the invariants $\mathbf{H}_{g,(1,d)}^{\text{FLS}}$ is similar to the calculations of the orbifold genus 0 Gromov-Witten theory of the second symmetric product of a nonsingular surface as pursued in [53, 59]. We expect a connection can be made to their work.

The main step in the proof of Theorem 4 is the evaluation of the generating series $F(u)$. Below we will give a second proof of Theorem 4 under slightly stronger assumptions. The main new input here is the refined modularity statement of Theorem 8. Using the modularity property, the evaluation of $F(u)$ will follow automatically from the theory of modular forms.

For the second proof, we will assume the following holds:

($\exists \dagger$) *For every $d \geq 1$, there exists an abelian surface A and an irreducible curve class β of type $(1, d)$ satisfying property (\dagger).*

Second proof of Theorem 4 under assumption ($\exists \dagger$). For all $d \geq 1$, let β_d be an irreducible class of type $(1, d)$ on an abelian surface A_d satisfying (\dagger).

Step 1. Define the generating series

$$\varphi_g(q) = \sum_{d \geq 1} \mathbf{h}_{g,\beta_d}^{A_d,\text{FLS}} q^d.$$

By Proposition 4, we have, after the change of variables $u = 2\pi z$ and $y = -e^{iu}$,

$$(42) \quad \sum_{g \geq 2} (y^{1/2} + y^{-1/2})^{2g+2} \varphi_g(q) = \left(q \frac{d}{dq} \right)^2 \frac{K(z, \tau)^4}{4} = \sum_{m \geq 2} u^{2m} f_m(q),$$

where $f_m(q)$ are quasi-modular forms of weight $2m$,

$$f_m(q) \in \text{QMod}_{2m}.$$

Let $r = -(y^{1/2} + y^{-1/2}) = 2 \sin(u/2)$, and let

$$u = 2 \arcsin(r/2) = r + \frac{1}{24} r^3 + \frac{3}{640} r^5 + \dots$$

be the inverse transform. After inserting into (42), we obtain

$$\sum_{g \geq 2} \varphi_g(q) r^{2g+2} = \sum_{m \geq 2} \left(r + \frac{1}{24} r^3 + \dots \right)^{2m} f_m(q).$$

Hence, $\varphi_g(q)$ is a quasi-modular form with highest weight term $f_{g+1}(q)$:

$$(43) \quad \varphi_g(q) = f_{g+1}(q) + R(q)$$

for $R(q) \in \text{QMod}_{\leq 2g}$.

Step 2. By trading of the FLS for insertions as in (18), the vanishing of the $d = 0$ term and deformation invariance,

$$(44) \quad \mathbb{F}_g^{E_1 \times E_2}(\mathcal{H}_g; \mathbf{a}_1 \omega_2, \mathbf{b}_1 \omega_2, \omega_1 \mathbf{a}_2, \omega_1 \mathbf{b}_2) = \sum_{d \geq 1} \mathbb{H}_{g,(1,d)}^{\text{FLS}} q^d,$$

where we use the notation of Section 4. Applying Theorem 8, the series (44) is hence a quasi-modular form of pure weight $2g + 2$.

Step 3. By assumption (†) and the discussion after (40), the Gromov-Witten invariant $\mathbb{H}_{g,(1,d)}^{\text{FLS}}$ equals the sum

$$(45) \quad \mathbb{H}_{g,(1,d)}^{\text{FLS}} = \sum_{2 \leq g' \leq g} c_{g',g} h_{g',\beta_d}^{A_d, \text{FLS}}$$

for coefficients $c_{g',g} \in \mathbb{Q}$. Summing up (45) over all d , we obtain

$$\sum_{d \geq 1} \mathbb{H}_{g,(1,d)}^{\text{FLS}} q^d = \sum_{2 \leq g' \leq g} c_{g',g} \varphi_{g'}(q).$$

The left hand side is homogeneous of weight $2g + 2$, hence must equal the weight $2g + 2$ part of the right hand side. Therefore, by (43),

$$\sum_{d \geq 1} \mathbb{H}_{g,(1,d)}^{\text{FLS}} q^d = f_{g+1}(q).$$

By the definition of the $f_{g+1}(q)$ this shows part (ii) of the Theorem:

$$(46) \quad \sum_{g \geq 2} u^{2g+2} \sum_{d \geq 1} \mathbf{H}_{g,(1,d)}^{\text{FLS}} q^d = \sum_{g \geq 2} u^{2g} f_g(q) = \left(q \frac{d}{dq} \right)^2 \frac{1}{4} K(z, \tau)^4.$$

Comparing (46) with (42), also part (i) follows. □

Part II. Abelian threefolds

6. DONALDSON-THOMAS THEORY

6.1. Overview. Let A be a generic abelian surface with a curve class $\beta_{d'}$ of type $(1, d' > 0)$, and let E be a generic elliptic curve. Throughout Section 6, we will work with the abelian threefold

$$X = A \times E.$$

Here we compute the topological Euler characteristic of the stack $\mathrm{Hilb}^n(X, (\beta_{d'}, d))/X$ in the cases $d' \in \{1, 2\}$ proving Theorem 5. Next, we present a conjectural relationship between the Behrend function weighted Euler characteristic and the topological Euler characteristic via a simple sign change, and show how it implies Corollary* 5. We discuss the motivation and plausibility for the conjecture.

Our computation here is parallel to the computation of the reduced Donaldson-Thomas invariants for $K3 \times E$ in [5]. We will frequently refer to results of [5]. The technique used was developed by Bryan and Kool in [7].

6.2. Notation. Since the translation action of X on $\mathrm{Hilb}^n(X, (\beta_{d'}, d))$ has finite stabilizer, the reduced Donaldson-Thomas invariants

$$\mathrm{DT}_{n, (\beta_{d'}, d)} = e(\mathrm{Hilb}^n(X, (\beta_{d'}, d))/X, \nu) = \sum_{k \in \mathbb{Z}} k \cdot e(\nu^{-1}(k))$$

and the topological (unweighted) Euler characteristics

$$\widehat{\mathrm{DT}}_{n, (\beta_{d'}, d)} = e(\mathrm{Hilb}^n(X, (\beta_{d'}, d))/X).$$

are well-defined. We have dropped the superscript X in the notation for the Donaldson-Thomas invariants of Section 0.3.1.

We also use the short hand notation

$$\mathrm{Hilb}^{n, d', d}(X) = \mathrm{Hilb}^n(X, (\beta_{d'}, d))$$

and the following bullet convention:

Convention. *When an index in a space is replaced by a bullet (\bullet), we sum over the index, multiplying by the appropriate variable. The result is a formal series with coefficients in the Grothendieck ring.*

For example, we let

$$\mathrm{Hilb}^{\bullet, d', \bullet}(X)/X = \sum_{d \geq 0} \sum_{n \in \mathbb{Z}} [\mathrm{Hilb}^{n, d', d}(X)/X] p^n q^d,$$

which we regard as an element in $K_0(\mathrm{DM}_{\mathbb{C}})((p))[[q]]$, the ring of formal power series in q , Laurent in p , with coefficients in the Grothendieck ring of Deligne-Mumford stacks over \mathbb{C} .

Define the Donaldson-Thomas partition functions of X ,

$$\begin{aligned} \mathrm{DT}_{d'} &= \sum_{d \geq 0} \sum_{n \in \mathbb{Z}} \mathrm{DT}_{n, (\beta_{d'}, d)} (-p)^n q^d, \\ \widehat{\mathrm{DT}}_{d'} &= \sum_{d \geq 0} \sum_{n \in \mathbb{Z}} \widehat{\mathrm{DT}}_{n, (\beta_{d'}, d)} p^n q^d. \end{aligned}$$

By the bullet convention,

$$\widehat{\mathrm{DT}}_{d'} = e(\mathrm{Hilb}^{\bullet, d', \bullet}(X)/X),$$

where we extend the Euler characteristic

$$e : K_0(\mathrm{DM}_{\mathbb{C}}) \rightarrow \mathbb{Q}$$

termwise to the ring of formal power series in p and q over $K_0(\mathrm{DM}_{\mathbb{C}})$.

6.3. Vertical and diagonal loci. Let p_A and p_E be the projections of $X = A \times E$ onto the factors A and E respectively. We say an irreducible curve $C \subset X$ is

- *vertical*, if $p_E : C \rightarrow E$ has degree 0,
- *horizontal*, if $p_A : C \rightarrow A$ has degree 0,
- *diagonal*, if p_A, p_E have both non-zero degree.

The various definitions are illustrated in Figure 1.

Consider a subscheme $C \subset X$ which defines a point in $\mathrm{Hilb}^{n, d', d}(X)$. Since the class $p_{A*}[C] = \beta_{d'}$ is irreducible, there is a unique irreducible component of C of dimension 1, which is either vertical or diagonal. All other irreducible components of C of dimension 1 are horizontal.

Consider the sublocus

$$(47) \quad \mathrm{Hilb}_{\mathrm{vert}}^{n, d', d}(X) \subset \mathrm{Hilb}^{n, d', d}(X),$$

parametrizing subschemes $C \subset X$ with

$$C_0 \times \{z_0\} \subset C$$

for some $z_0 \in E$ and for some curve $C_0 \subset A$ of class β . We endow $\mathrm{Hilb}_{\mathrm{vert}}^{n, d', d}(X)$ with the natural scheme structure. It is a closed subscheme of $\mathrm{Hilb}^{n, d', d}(X)$.

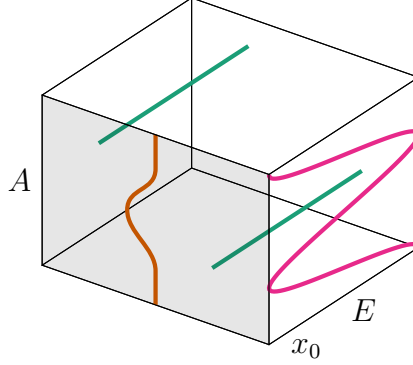


FIGURE 1. A vertical curve (orange) contained in the slice $A \times \{x_0\}$ (light grey), a diagonal curve (pink), and two horizontal curves (green).

Let $\text{Hilb}_{\text{diag}}^{n,d',d}(X)$ be the complement of the inclusion (47),

$$\text{Hilb}_{\text{diag}}^{n,d',d}(X) = \text{Hilb}^{n,d',d}(X) \setminus \text{Hilb}_{\text{vert}}^{n,d',d}(X).$$

Hence, every point in $\text{Hilb}_{\text{diag}}^{n,d',d}(X)$ corresponds to a subscheme $C \subset X$, which contains a diagonal component.

Since the condition defining the subscheme (47) is invariant under the translation action of X , we have an induced action of X on $\text{Hilb}_{\text{vert}}^{n,d',d}(X)$ and its complement. We exhibit the stack $\text{Hilb}_{\text{vert}}^{n,d',d}(X)/X$ as a global quotient stack of a scheme by a finite group of order d'^2 as follows.

Let $L \rightarrow A$ be a fixed line bundle on A with $c_1(L) = \beta_{d'}$, and let $z_0 \in E$ be a fixed point. Consider the subscheme

$$\text{Hilb}_{\text{vert, fixed}}^{n,d',d}(X) \subset \text{Hilb}_{\text{vert}}^{n,d',d}(X)$$

parametrizing subschemes $C \subset X$ with $C_0 \times \{z_0\} \subset C$ for some

$$(48) \quad C_0 \in |L|.$$

The stabilizer of $\text{Hilb}_{\text{vert, fixed}}^{n,d',d}(X)$ under the translation action of X is the subgroup

$$(49) \quad \text{Ker}(\phi : A \rightarrow \widehat{A}) \subset A,$$

where $\phi : a \mapsto L \otimes t_a^* L^{-1}$ and $t_a : A \rightarrow A$ denotes the translation by $a \in A$. By (6), the subgroup (49) is isomorphic to $\mathbb{Z}_{d'} \times \mathbb{Z}_{d'}$. Hence, we have the stack equivalence

$$(50) \quad \text{Hilb}_{\text{vert}}^{n,d',d}(X)/X \cong \text{Hilb}_{\text{vert, fixed}}^{n,d',d}(X)/(\mathbb{Z}_{d'} \times \mathbb{Z}_{d'}).$$

6.4. **Proof of Theorem 5 (i).** Let L be a line bundle on A with $c_1(L) = \beta_1$, and let

$$C_0 \in |L|$$

be the unique nonsingular genus 2 curve in $|L|$. Since L has type $(1, 1)$, the class $c_1(L)$ is a principal polarization of A . In particular, A is isomorphic to the Jacobian J of C_0 .

Step 1. Every irreducible diagonal curve $C \subset X$ in class (β_1, d) maps isomorphically to C_0 and, therefore, induces a non-constant map

$$C_0 \rightarrow E.$$

Dualizing, we obtain a non-constant map $E \rightarrow J(C_0) \cong A$, whose image is an abelian subvariety of A of dimension 1. Hence, by the genericity of A , no diagonal curve exists and $\text{Hilb}_{\text{diag}}^{n,d',d}(X)$ is empty.

Since there are no diagonal curves, we write

$$\text{Hilb}_{\text{fixed}}^{n,d',d}(X) = \text{Hilb}_{\text{vert, fixed}}^{n,d',d}(X).$$

Then, by the equivalence (50) with $d' = 1$,

$$e(\text{Hilb}^{n,d',d}(X)/X) = e(\text{Hilb}_{\text{fixed}}^{n,d',d}(X)).$$

Using the bullet convention, we find

$$\widehat{\text{DT}}_1 = e(\text{Hilb}_{\text{fixed}}^{\bullet,1,\bullet}(X)).$$

Step 2. Let $\widehat{X}_{C_0 \times E}$ be the formal completion of X along the closed subvariety $C_0 \times E$, and let

$$U = X \setminus C_0 \times E$$

be the open complement. The subschemes $\{\widehat{X}_{C_0 \times E}, U\}$ forms a fpqc cover of X . By fpqc descent, subschemes in X are determined by their restrictions to $\widehat{X}_{C_0 \times E}$ and U . Since subschemes parameterized by $\text{Hilb}_{\text{fixed}}^{n,1,d}(X)$ are disjoint unions of components contained entirely in $\widehat{X}_{C_0 \times E}$ or U , see Figure 2, there is no overlap condition for descent.

Consequently, we can stratify $\text{Hilb}_{\text{fixed}}^{n,1,d}(X)$ by locally closed subsets isomorphic to the product of Hilbert schemes of $\widehat{X}_{C_0 \times E}$ and U respectively. The result is succinctly expressed as an equality in the Grothendieck ring $K_0(\text{Var}_{\mathbb{C}})((p))[[q]]$:

$$(51) \quad \text{Hilb}_{\text{fixed}}^{\bullet,1,\bullet}(X) = \text{Hilb}_{\text{fixed}}^{\bullet,1,\bullet}(\widehat{X}_{C_0 \times E}) \cdot \text{Hilb}^{\bullet,0,\bullet}(U),$$

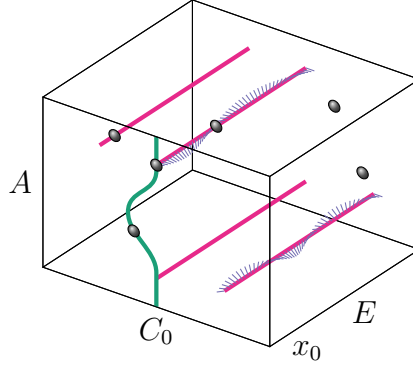


FIGURE 2. Subschemes in $A \times E$ up to translation. Horizontal curves (pink) can have nilpotent thickenings (blue), and there can be embedded and floating points (gray). The unique vertical curve $C_0 \in |L|$ (green) lies in $A \times \{x_0\}$ and is generically reduced.

where we regard $\text{Hilb}_{\text{fixed}}^{n,1,d}(\widehat{X}_{C_0 \times E})$ and $\text{Hilb}^{n,0,d}(U)$ as subschemes of $\text{Hilb}_{\text{fixed}}^{n,1,d}(X)$ and $\text{Hilb}^{n,0,d}(X)$ respectively. Taking Euler characteristics in (51), we obtain

$$(52) \quad \widehat{\text{DT}}_1 = e(\text{Hilb}_{\text{fixed}}^{\bullet,1,\bullet}(\widehat{X}_{C_0 \times E})) \cdot e(\text{Hilb}^{\bullet,0,\bullet}(U)).$$

Step 3. We calculate the second factor $e(\text{Hilb}^{\bullet,0,\bullet}(U))$.

The E action on U induces an action of E on $\text{Hilb}^{n,0,d}(U)$. This new E action exists because the fixed condition (48) only concerns the $\text{Hilb}_{\text{fixed}}^{n,1,d}(\widehat{X}_{C_0 \times E})$ factors and is independent of U and $\text{Hilb}^{n,0,d}(U)$.

Since a scheme with a free E action has trivial Euler characteristic, we have

$$e(\text{Hilb}^{n,0,d}(U)) = e(\text{Hilb}^{n,0,d}(U)^E),$$

where $\text{Hilb}^{n,0,d}(U)^E$ is the fixed locus of the E -action on $\text{Hilb}^{n,0,d}(U)$. Every element of $\text{Hilb}^{n,0,d}(U)^E$ corresponds to an E -invariant subscheme, or equivalently, is of the form $Z \times E$ for a zero-dimensional subscheme $Z \subset A \setminus C_0$ of length d . Since $\chi(\mathcal{O}_{Z \times E}) = 0$ for every such

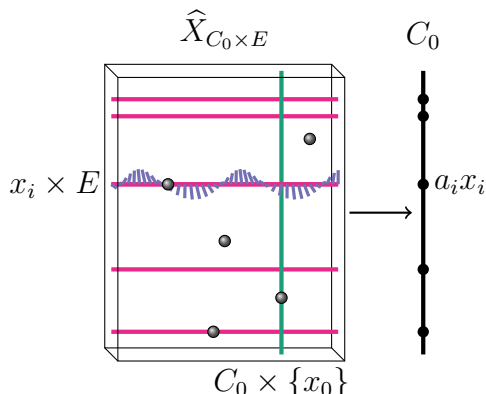


FIGURE 3. The map $\rho_d : \text{Hilb}_{\text{fixed}}^{n,1,d}(\widehat{X}_{C_0 \times E}) \rightarrow \text{Sym}^d(C_0)$ records the location and multiplicity of the horizontal curve components.

Z , we find

$$\begin{aligned}
 e(\text{Hilb}^{\bullet,0,\bullet}(U)) &= e\left(\sum_{d \geq 0} \text{Hilb}^d(A \setminus C_0) q^d\right) \\
 (53) \qquad \qquad \qquad &= \left(\prod_{m \geq 1} (1 - q^m)^{-1}\right)^{e(A \setminus C_0)} \\
 &= \prod_{m \geq 1} (1 - q^m)^{-2}.
 \end{aligned}$$

We have used Göttsche’s formula for the Euler characteristic of the Hilbert scheme of points of a surface [20].

Step 4. We calculate the first factor $e(\text{Hilb}_{\text{fixed}}^{\bullet,1,\bullet}(\widehat{X}_{C_0 \times E}))$.

Consider the morphism

$$(54) \qquad \rho_d : \text{Hilb}_{\text{fixed}}^{n,1,d}(\widehat{X}_{C_0 \times E}) \rightarrow \text{Sym}^d(C_0),$$

defined as follows. Let $[C] \in \text{Hilb}_{\text{fixed}}^{n,1,d}(\widehat{X}_{C_0 \times E})$ be a scheme with curve support $C_0 \times z_0 \cup_i (x_i \times E)$ and multiplicity a_i along $x_i \times E$. Then

$$\rho_d([C]) = \sum_i a_i x_i \in \text{Sym}^d(C_0).$$

Hence, $\rho_d([C])$ records the intersection (with multiplicities) of C_0 with all horizontal components of C , see Figure 3.

We determine the Euler characteristic of $\text{Hilb}_{\text{fixed}}^{\bullet,1,\bullet}(\widehat{X}_{C_0 \times E})$ by computing the Euler characteristic of $\text{Sym}^d(C_0)$, weighted by the constructible function given by the Euler characteristic of the fibers of ρ_d . Hence,

we write

$$\begin{aligned} e(\mathrm{Hilb}_{\mathrm{fixed}}^{n,1,d}(\widehat{X}_{C_0 \times E})) &= \int_{\mathrm{Hilb}_{\mathrm{fixed}}^{n,1,d}(\widehat{X}_{C_0 \times E})} 1 \, de \\ &= \int_{\mathrm{Sym}^d C_0} (\rho_d)_*(1) \, de, \end{aligned}$$

where de is the measure on constructible subsets induced by the Euler characteristic and $\rho_{d*}(1)$ denotes integration along the fiber. By writing

$$\mathrm{Sym}^\bullet C_0 = \sum_{d \geq 0} \mathrm{Sym}^d C_0 q^d$$

and extending the integration to the \bullet notation termwise, we obtain

$$(55) \quad e(\mathrm{Hilb}_{\mathrm{fixed}}^{\bullet,1,\bullet}(\widehat{X}_{C_0 \times E})) = \int_{\mathrm{Sym}^\bullet C_0} \rho_*(1) \, de$$

where the measurable function $\rho_*(1)$ is given by

$$\rho_*(1)\left(\sum_i a_i x_i\right) = e\left(\rho^{-1}\left(\sum_i a_i x_i\right)\right) \in \mathbb{Z}((p)).$$

The following result shows that $\rho_*(1)$ only depends on the underlying partition of the point in the symmetric product.

Proposition 5. *We have*

$$\rho_*(1)\left(\sum_i a_i x_i\right) = (p^{1/2}(1-p)^{-1})^{e(C_0)} \prod_i F(a_i)$$

where

$$\sum_{a \geq 0} F(a) q^a = \prod_{m \geq 1} \frac{(1-q^m)}{(1-pq^m)(1-p^{-1}q^m)}.$$

The proof of Proposition 5 is identical to the proof of [5, Proposition 4.1 and Lemma 4.3] with $e(C_0) = -2$ here (instead of Euler characteristic 2 in [5]).

We apply the following result regarding weighted Euler characteristics of symmetric products.

Lemma 15. *Let S be a scheme, and let $\mathrm{Sym}^\bullet(S) = \sum_{d \geq 0} \mathrm{Sym}^d(S) q^d$. Let G be a constructible function on $\mathrm{Sym}^\bullet(S)$ such that*

$$G\left(\sum_i a_i x_i\right) = \prod_i g(a_i),$$

for a function g with $g(0) = 1$. Then

$$\int_{\mathrm{Sym}^\bullet S} G \, de = \left(\sum_{a \geq 0} g(a) q^a\right)^{e(S)}.$$

An elementary proof of Lemma 15 is given in [7], but see also [5, Lemma 4.2].

After applying Proposition 5 and Lemma 15 to (55), we obtain

$$\begin{aligned} e(\mathrm{Hilb}_{\mathrm{fixed}}^{\bullet,1,\bullet}(\widehat{X}_{C_0 \times E})) &= p^{-1}(1-p)^2 \left(\sum_{a \geq 0} F(a) q^a \right)^{-2} \\ &= p^{-1}(1-p)^2 \prod_{m \geq 1} \frac{(1-pq^m)^2(1-p^{-1}q^m)^2}{(1-q^m)^2}. \end{aligned}$$

Using (52), (53), and the definition of $K(p, q)$, we obtain the evaluation of part (i) of Theorem 5. \square

6.5. Proof of Theorem 5 (ii). Let A be a generic abelian surface with curve class β_2 of type $(1, 2)$, and let $L \rightarrow A$ be a fixed line bundle with $c_1(L) = \beta_2$. The linear system

$$|L| = \mathbb{P}^1$$

is a pencil of irreducible genus 3 curves. The generic curve in the pencil is nonsingular, but there are exactly 12 singular curves (each of which has a single nodal), see [8].

By the disjoint union

$$\mathrm{Hilb}^{n,d',d}(X) = \mathrm{Hilb}_{\mathrm{diag}}^{n,d',d}(X) \sqcup \mathrm{Hilb}_{\mathrm{vert}}^{n,d',d}(X)$$

and the isomorphism (50), we have

$$\mathrm{Hilb}^{n,2,d}(X)/X = \mathrm{Hilb}_{\mathrm{vert, fixed}}^{n,2,d}(X)/(\mathbb{Z}/2 \times \mathbb{Z}/2) \sqcup \mathrm{Hilb}_{\mathrm{diag}}^{n,2,d}(X)/X.$$

Using the bullet convention, it follows

$$(56) \quad \widehat{\mathrm{DT}}_2 = \frac{1}{4} e(\mathrm{Hilb}_{\mathrm{vert, fixed}}^{\bullet,2,\bullet}(X)) + e(\mathrm{Hilb}_{\mathrm{diag}}^{\bullet,2,\bullet}(X)/X).$$

Step 1. We begin to evaluate $e(\mathrm{Hilb}_{\mathrm{vert, fixed}}^{\bullet,2,\bullet}(X))$. Consider the map

$$\tau : \mathrm{Hilb}_{\mathrm{vert, fixed}}^{\bullet,2,\bullet}(X) \rightarrow |L| = \mathbb{P}^1,$$

which maps a subscheme C to the divisor in $|L|$ associated to $p_A(C)$. The fiber of τ over a point $C \in |L|$, denoted

$$\mathrm{Hilb}_C^{n,2,d}(X) \subset \mathrm{Hilb}_{\mathrm{vert, fixed}}^{n,2,d}(X),$$

is the sublocus of $\mathrm{Hilb}_{\mathrm{vert, fixed}}^{n,2,d}(X)$ which parametrizes curves which contain the curve $C \times \{z_0\}$.

As we have done in (55), we may write

$$e(\mathrm{Hilb}_{\mathrm{vert, fixed}}^{\bullet,2,\bullet}(X)) = \int_{|L|} \tau_*(1) de$$

where $\tau_*(1)$ denotes the constructible function obtained by integration along the fiber:

$$\tau_*(1)([C]) = e(\mathrm{Hilb}_C^{\bullet,2,\bullet}(X)).$$

Step 2. Let $C \subset A$ be a curve in $|L|$. Following a strategy similar to the proof of part (i), we will compute explicit expressions for $\tau_*(1)([C])$ depending only upon whether C is nodal or not.

Following Step 2 of the proof of part (i), we have

$$\mathrm{Hilb}_C^{\bullet,2,\bullet}(X) = \mathrm{Hilb}_C^{\bullet,2,\bullet}(\widehat{X}_{C \times E}) \cdot \mathrm{Hilb}_C^{\bullet,2,\bullet}(X \setminus C \times E).$$

Using the extra E action on the second factors, we obtain

$$(57) \quad e(\mathrm{Hilb}_C^{\bullet,2,\bullet}(X)) = e(\mathrm{Hilb}_C^{\bullet,2,\bullet}(\widehat{X}_{C \times E})) \cdot \prod_{m \geq 1} (1 - q^m)^{-e(A \setminus C)}.$$

For the first factor, we use the map

$$\rho : \mathrm{Hilb}_C^{\bullet,2,\bullet}(\widehat{X}_{C \times E}) \rightarrow \mathrm{Sym}^\bullet(C)$$

which records the location and multiplicity of the horizontal components (and has already appeared in (54)).

Step 3. If C is nonsingular, we apply Proposition 5 with C in place of C_0 for the integration along the fiber of ρ . By Lemma 15, we have

$$\begin{aligned} e(\mathrm{Hilb}_C^{\bullet,2,\bullet}(\widehat{X}_{C \times E})) &= \int_{\mathrm{Sym}^\bullet C} \rho_*(1) de \\ &= (p^{1/2}(1-p)^{-1})^{e(C)} \left(\sum_{a \geq 0} F(a)q^a \right)^{e(C)} \\ &= p^{-2}(1-p)^4 \prod_{m \geq 1} \frac{(1-pq^m)^4(1-p^{-1}q^m)^4}{(1-q^m)^4}. \end{aligned}$$

Using (57) with $e(A \setminus C) = 4$, we find

$$(58) \quad \tau_*(1)([C]) = e(\mathrm{Hilb}_C^{\bullet,2,\bullet}(X)) = K(p, q)^4.$$

Step 4. Let $C = N \in |L|$ be a curve with a nodal point $z \in C$. The corresponding moduli space $\mathrm{Hilb}_N^{n,2,d}(X)$ is depicted in Figure 4. We have the following result.

Proposition 6. *Let $x_1, \dots, x_l \in N \setminus \{z\}$, then*

$$(59) \quad \rho_*(1)\left(bz + \sum_{i=1}^l a_i x_i\right) = p^{-2}(1-p)^4 N(b) \prod_{i=1}^l F(a_i)$$

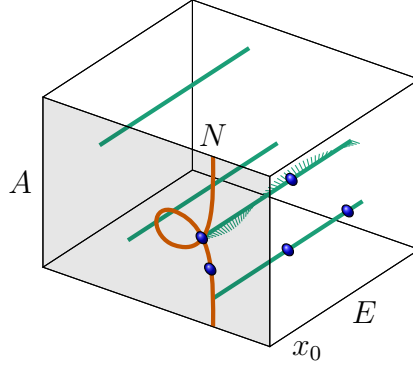


FIGURE 4. A subscheme parameterized by $\text{Hilb}_N^{\bullet,2,\bullet}(X)$ which includes a thickened horizontal curve (green) attached to the node of a nodal vertical curve (orange). For the subscheme to have a non-zero contribution to the Euler characteristic, embedded points (blue) can only occur on N or on horizontal curves attached to N .

where

$$\sum_{b \geq 0} N(b)q^b = \prod_{m \geq 1} (1 - q^m)^{-1} \cdot \left(1 + \frac{p}{(1 - p)^2} + \sum_{d \geq 1} \sum_{k|d} k(p^k + p^{-k})q^d \right).$$

The proof is identical to the proof of the corresponding statement for contributions of nodal curves in the $K3 \times E$ geometry of [5, Section 5]. The only difference is that in our case $e(N \setminus \{z\}) = -4$, whereas in the $K3$ case $e(N \setminus \{z\}) = 0$. The different Euler characteristic results in the different prefactor $p^{-2}(1 - p)^4$ in (59). The prefactor in general is

$$(p^{1/2}(1 - p)^{-1})^{e(N \setminus \{z\})}.$$

The geometry of the term $N(b)$ arises as the contribution

$$N(b) = e(\text{Hilb}^{\bullet,2,b}(\widehat{X}_{\{z\} \times E})).$$

In [5], the right hand side is expressed in terms of the topological vertex. By results of [3], we obtain the closed form of Proposition 6.

By Proposition 6 and Lemma 15, we obtain

$$\begin{aligned} e(\text{Hilb}_N^{\bullet,2,\bullet}(\widehat{X}_{N \times E})) &= \int_{\text{Sym}^{\bullet} N} \rho_*(1) de \\ &= p^{-2}(1 - p)^4 \int_{\text{Sym}^{\bullet}(N \setminus \{z\})} \prod_i F(a_i) de \int_{\text{Sym}^{\bullet}(\{z\})} N(b) de \end{aligned}$$

$$\begin{aligned}
&= p^{-2}(1-p)^4 \left(\sum_{a \geq 0} F(a)q^a \right)^{e(N \setminus \{z\})} \cdot \left(\sum_{b \geq 0} N(b)q^b \right) \\
&= p^{-2}(1-p)^4 \left(\prod_{m \geq 1} \frac{(1-pq^m)^4(1-p^{-1}q^m)^4}{(1-q^m)^5} \right) \\
&\quad \cdot \left(1 + \frac{p}{(1-p)^2} + \sum_{d \geq 1} \sum_{k|d} k(p^k + p^{-k})q^d \right).
\end{aligned}$$

By (57) with $e(A \setminus N) = 3$, we find

$$\begin{aligned}
(60) \quad &\tau_*(1)([N]) = e(\text{Hilb}_{N^{\bullet,2,\bullet}}^{\bullet,2,\bullet}(X)) \\
&= K(p, q)^4 \cdot \left(1 + \frac{p}{(1-p)^2} + \sum_{d \geq 1} \sum_{k|d} k(p^k + p^{-k})q^d \right).
\end{aligned}$$

Step 5. We complete the calculation of $e(\text{Hilb}_{\text{vert, fixed}}^{\bullet,2,\bullet}(X))$.

By (58) and (60), the function $\tau_*(1)([C])$ only depends upon whether $C \in |L|$ is nodal or not. Therefore,

$$\begin{aligned}
&e(\text{Hilb}_{\text{vert, fixed}}^{\bullet,2,\bullet}(X)) = \int_{|L|} \tau_*(1)de \\
&= e(\mathbb{P}^1 \setminus 12 \text{ points}) \cdot K(p, q)^4 + e(12 \text{ points}) \cdot \tau_*(1)(N) \\
&= -10K(p, q)^4 + 12K(p, q)^4 \cdot \left(1 + \frac{p}{(1-p)^2} + \sum_{d \geq 1} \sum_{k|d} k(p^k + p^{-k})q^d \right) \\
&= K(p, q)^4 \cdot \left(2 + 12 \frac{p}{(1-p)^2} + 12 \sum_{d \geq 1} \sum_{k|d} k(p^k + p^{-k})q^d \right).
\end{aligned}$$

Step 6. We compute the contribution $e(\text{Hilb}_{\text{diag}}^{\bullet,2,\bullet}(X)/X)$ arising from the locus of curves with a diagonal component.

By Lemma 21 of Section 7.4, there are

$$12 \sigma \left(\frac{d}{2} \right) \delta_{d, \text{even}}$$

isolated translation classes of diagonal curves of class (β_2, d) . Moreover, the translation action of X on each translation class is free.

Choose one representative from each X -orbit of the diagonal classes.

Let

$$(61) \quad \text{Hilb}_{\text{diag, fixed}}^{n,2,d}(X) \subset \text{Hilb}_{\text{diag}}^{n,2,d}(X)$$

be the subscheme parameterizing curves, who contain one of the chosen representatives. The moduli space (61) defines a slice for the action of

X on $\text{Hilb}_{\text{diag}}^{n,2,d}(X)$,

$$\text{Hilb}_{\text{diag}}^{n,2,d}(X)/X \cong \text{Hilb}_{\text{diag, fixed}}^{n,2,d}(X).$$

The contribution of such subschemes to the Euler characteristic is computed precisely as the contribution with a genus 3 vertical component in Step 3 above. Taking into account the number of diagonal curves and their degree in the horizontal direction, we find

$$\begin{aligned} e(\text{Hilb}_{\text{diag, fixed}}^{\bullet,2,\bullet}(X)) &= e(\text{Hilb}_C^{\bullet,2,\bullet}(X)) \cdot \left(12 \sum_{d \geq 1} \sum_{k|d} kq^{2d}\right) \\ &= K(p, q)^4 \cdot \left(12 \sum_{d \geq 1} \sum_{k|d} kq^{2d}\right). \end{aligned}$$

Step 7. We have calculated all terms in the sum (56) in Steps 5 and 6. After summing, the proof of part (ii) of Theorem 5 is complete. \square

6.6. The Behrend function. In the cases $d' \in \{1, 2\}$, we conjecture that the Behrend function weighted Euler characteristic of the Hilbert schemes differs from the ordinary Euler characteristic by a factor of $\pm(-1)^n$. Here, n is the holomorphic Euler characteristic, and the overall sign depends upon whether the component of the Hilbert scheme corresponds to subschemes with diagonal curves or vertical curves.

The Behrend function on the quotient

$$\nu : \text{Hilb}^{n,d',d}(X)/X \rightarrow \mathbb{Z}$$

induces, by our identification of the various components with different slices of the X -action, constructible functions on

$$\text{Hilb}_{\text{fixed}}^{n,1,d}(X), \quad \text{Hilb}_{\text{vert, fixed}}^{n,2,d}(X), \quad \text{and} \quad \text{Hilb}_{\text{diag, fixed}}^{n,2,d}(X).$$

We will denote these functions by ν as well and write $e(\cdot, \nu)$ for the topological Euler characteristic weighted by ν .

Conjecture D. *We have*

$$\begin{aligned} e(\text{Hilb}_{\text{fixed}}^{n,1,d}(X)) &= -(-1)^n e(\text{Hilb}_{\text{fixed}}^{n,1,d}(X), \nu), \\ e(\text{Hilb}_{\text{vert, fixed}}^{n,2,d}(X)) &= -(-1)^n e(\text{Hilb}_{\text{vert, fixed}}^{n,2,d}(X), \nu), \\ e(\text{Hilb}_{\text{diag, fixed}}^{n,2,d}(X)) &= +(-1)^n e(\text{Hilb}_{\text{diag, fixed}}^{n,2,d}(X), \nu). \end{aligned}$$

Assuming Conjecture D, we prove Corollary* 5.

Proof of Corollary 5. In case $d' = 1$, we have, by Conjecture D,

$$DT_1 = -\widehat{DT}_1.$$

Part (i) of Corollary* 5 hence follows from part (i) of Theorem 5.

In case $d' = 2$, we have, following (56),

$$DT_2 = \sum_{d \geq 0} \sum_{n \in \mathbb{Z}} \left(\frac{1}{4} e(\text{Hilb}_{\text{vert, fixed}}^{\bullet, 2, \bullet}(X), \nu) + e(\text{Hilb}_{\text{diag, fixed}}^{\bullet, 2, \bullet}(X), \nu) \right) (-p)^n q^d.$$

By Conjecture D, the right side equals

$$\sum_{d \geq 0} \sum_{n \in \mathbb{Z}} \left(-\frac{1}{4} e(\text{Hilb}_{\text{vert, fixed}}^{\bullet, 2, \bullet}(X)) + e(\text{Hilb}_{\text{diag, fixed}}^{\bullet, 2, \bullet}(X)) \right) p^n q^d.$$

These terms have been calculated in Steps 5 and 6 of the proof of Theorem 5 (ii). Summing up, we obtain

$$K(p, q)^4 \cdot \left(-3\wp(p, q) - \frac{1}{4} + 6 \sum_{d \geq 1} \sum_{k|d} k(2q^{2d} - q^d) \right),$$

where

$$\wp(p, q) = \frac{1}{12} + \frac{p}{(1-p)^2} + \sum_{d \geq 1} \sum_{k|d} k(p^k - 2 + p^{-k})q^d$$

is the Weierstrass elliptic function expanded in p and q . Rewriting

$$\begin{aligned} & -\frac{1}{4} + 6 \sum_{d \geq 1} \sum_{k|d} k(2q^{2d} - q^d) \\ &= -\frac{1}{4} \left(1 + 24 \sum_{d \geq 1} \sum_{k|d} kq^d - 24 \sum_{d \geq 1} \sum_{\substack{k|d \\ k \text{ even}}} kq^d \right) = \frac{1}{4} \cdot \vartheta_{D_4}(q) \end{aligned}$$

where

$$\vartheta_{D_4}(q) = 1 + 24 \sum_{d \geq 1} \sum_{\substack{k|d \\ k \text{ odd}}} kq^d$$

is the theta function of the D_4 lattice, we find

$$DT_2 = -K(p, q)^4 \cdot \left(3\wp(p, q) + \frac{1}{4} \vartheta_{D_4}(q) \right).$$

Hence, part (ii) of Corollary* 5 follows from Lemma 16 below. \square

Lemma 16. *We have*

$$K(p, q)^4 \cdot \left(3\wp(p, q) + \frac{1}{4} \vartheta_{D_4}(q) \right) = \frac{3}{2} K(p, q)^4 \wp(p, q) + \frac{3}{8} K(p^2, q^2)^2.$$

Proof. The Lemma is stated as an equality of formal power series. Since both sides converge for the variables

$$p = e^{2\pi iz} \quad \text{and} \quad q = e^{2\pi i\tau}$$

with $z \in \mathbb{C}$ and $\tau \in \mathbb{H}$, we may work with the actual functions $K(z, \tau)$, $\wp(z, \tau)$, and $\vartheta_{D_4}(\tau)$.

The statement of the Lemma is then equivalent to

$$(62) \quad \varphi(z, \tau) = \frac{K(2z, 2\tau)^2}{K(z, \tau)^4} - 4\wp(z, \tau) = \frac{2}{3}\vartheta_{D_4}(\tau).$$

From the definition of $K(z, \tau)$, we obtain

$$K(z + \lambda\tau + \mu, \tau) = (-1)^{\lambda+\mu} q^{-\lambda/2} p^{-\lambda} K(z, \tau)$$

for all $\lambda, \mu \in \mathbb{Z}$. Combined with the double-periodicity of the Weierstrass \wp -function, this implies

$$\varphi(z + \lambda\tau + \mu, \tau) = \varphi(z, \tau)$$

for all $\lambda, \mu \in \mathbb{Z}$. Since

$$K(z, \tau) = 2\pi iz + O(z^3) \quad \text{and} \quad \wp(z, \tau) = \frac{1}{(2\pi iz)^2} + O(1),$$

the function $\varphi(z, \tau)$ has no pole at $z = 0$. Because the only zero of $K(z, \tau)$ and $\vartheta_1(z, \tau)$ and the only pole of $\wp(z, \tau)$ in the fundamental region are at $z = 0$, the function $\varphi(z, \tau)$ is entire. By double-periodicity, $\varphi(z, \tau)$ is hence a constant only depending on τ .

We evaluate $\varphi(z, \tau)$ at $z = 1/2$. We have

$$\wp\left(\frac{1}{2}, \tau\right) = -\frac{1}{6}\vartheta_{D_4}(\tau).$$

Since $K(1/2, \tau) \neq 0$, but $K(1, \tau) = 0$, this shows

$$\varphi(z, \tau) = \varphi\left(\frac{1}{2}, \tau\right) = -4 \cdot \left(-\frac{1}{6}\vartheta_{D_4}(\tau)\right) = \frac{2}{3}\vartheta_{D_4}(\tau). \quad \square$$

6.7. Discussion of Conjecture D. The phenomenon proposed by Conjecture D is parallel to the phenomenon exhibited by the Donaldson-Thomas invariants of toric Calabi-Yau threefolds. In the case of toric Calabi-Yau threefolds, the only subschemes which contribute to the DT invariants are the torus fixed subschemes, namely those which are locally given by monomial ideals. The value of the Behrend function at such a subscheme Z is given by $\pm(-1)^n$ where $n = \chi(\mathcal{O}_Z)$ and the overall sign depends only on the 1-dimensional component of Z (and not on the embedded points) [37].

One route to prove Conjecture D would be to show the following two properties.

- (i) The motivic methods of the previous section are compatible with the Behrend function, specifically that the group actions defined on the various substrata of $\text{Hilb}(X)/X$ respect the Behrend function.
- (ii) The value of the Behrend function at a subscheme Z which is formally locally given by monomial ideals is given by $\pm(-1)^n$ where the overall sign is positive if Z contains a diagonal curve and negative if Z contains a vertical curve.

7. GROMOV-WITTEN THEORY

7.1. Overview. Let X be an abelian threefold, let $g \geq 2$ be the genus, and let $\beta \in H_2(X, \mathbb{Z})$ be a curve class of type (d_1, d_2, d_3) with $d_1, d_2 > 0$.

In Section 7.2, we define a virtual fundamental class on the quotient stack

$$\overline{M}_g(X, \beta)/X.$$

The degree of the virtual class is the *quotient Gromov-Witten invariant* of X .

The reduced Gromov-Witten invariants of X are defined by integration against the 3-reduced virtual class (defined in Section 1.4) on the moduli space $\overline{M}_{g,n}(X, \beta)$. In Section 7.3, we prove that these invariants are fully determined by the quotient Gromov-Witten invariants and classical intersections.

In Section 7.4, we relate the quotient invariants in genus 3 to the lattice counts of Section 1.3. We also prove the fundamental Lemma 20 needed in Section 6. In Section 7.5, we use Jacobi form techniques to show Conjectures B and C are consistent with Theorem 5.

7.2. Quotient invariants. Since $g \geq 2$, X acts on $\overline{M}_g(X, \beta)$ with finite stabilizers. Let

$$(63) \quad q : \overline{M}_g(X, \beta) \rightarrow \overline{M}_g(X, \beta)/X.$$

be the quotient map.

Let $0_A \in A$ be the identity element, let

$$\text{ev} : \overline{M}_{g,1}(X, \beta) \rightarrow A$$

be the evaluation map, let ψ_1 be the first Chern class of the cotangent line $L_1 \rightarrow \overline{M}_{g,1}(X, \beta)$ and let

$$\pi : \overline{M}_{g,1}(X, \beta) \rightarrow \overline{M}_g(X, \beta)$$

be the forgetful map.

We define the reduced virtual class on $\overline{M}_g(X, \beta)/X$ by

$$[\overline{M}_g(X, \beta)/X]^{\text{red}} = \frac{1}{2g-2} (q \circ \pi)_* \left((\text{ev}^{-1}(0_A) \cup \psi_1) \cap [\overline{M}_{g,1}(X, \beta)]^{\text{red}} \right).$$

The definition is justified by the following Lemma.

Lemma 17. *Let $p : \overline{M}_{g,n}(X, \beta) \rightarrow \overline{M}_g(X, \beta)/X$ be the composition of the forgetful with the quotient map. Then,*

$$p^* [\overline{M}_g(X, \beta)/X]^{\text{red}} = [\overline{M}_{g,n}(X, \beta)]^{\text{red}}.$$

Proof. The map p factors as

$$p : \overline{M}_{g,n}(X, \beta) \xrightarrow{p'} \overline{M}_g(X, \beta) \xrightarrow{q} \overline{M}_g(X, \beta)/X$$

where p' is the forgetful and q is the quotient map (63). Since we have

$$p'^* [\overline{M}_g(X, \beta)]^{\text{red}} = [\overline{M}_{g,n}(X, \beta)]^{\text{red}},$$

it is enough to prove

$$q^* [\overline{M}_g(X, \beta)/X]^{\text{red}} = [\overline{M}_g(X, \beta)]^{\text{red}}.$$

Consider the product decomposition

$$(64) \quad \overline{M}_{g,1}(X, \beta) = \overline{M}_{g,1}^0(X, \beta) \times X,$$

where

$$\overline{M}_{g,1}^0(X, \beta) = \text{ev}^{-1}(0_A).$$

Under the decomposition (64), write

$$q' : \overline{M}_{g,1}(X, \beta) \rightarrow \overline{M}_{g,1}^0(X, \beta)$$

for the projection to the first factor. Since the obstruction theory of $\overline{M}_{g,1}(X, \beta)$ is X -equivariant, we have

$$\psi_1 \cap [\overline{M}_{g,1}(X, \beta)]^{\text{red}} = q'^* \alpha$$

for some class α on $\overline{M}_{g,1}^0(X, \beta)$.

Consider the inclusion

$$\iota : \overline{M}_{g,1}^0(X, \beta) \rightarrow \overline{M}_{g,1}(X, \beta)$$

defined by $\overline{M}_{g,1}^0(X, \beta) \times 0_A$ under (64) and the fiber diagram

$$\begin{array}{ccc} \overline{M}_{g,1}(X, \beta) & \xrightleftharpoons[\iota]{q'} & \overline{M}_{g,1}^0(X, \beta) \\ \downarrow \pi & & \downarrow \pi' \\ \overline{M}_g(X, \beta) & \xrightarrow{q} & \overline{M}_g(X, \beta)/X, \end{array}$$

where π' is the map induced by π . Then

$$\begin{aligned} & (2g-2)q^*[\overline{M}_g(X, \beta)/X]^{\text{red}} \\ &= q^*\pi'_*q'_*\left((\text{ev}^{-1}(0_A) \cup \psi_1) \cap [\overline{M}_{g,1}(X, \beta)]^{\text{red}}\right) \\ &= \pi_*q'^*q'_*\left((\text{ev}^{-1}(0_A) \cup \psi_1) \cap [\overline{M}_{g,1}(X, \beta)]^{\text{red}}\right) \\ &= \pi_*q'^*\iota^*\left(\psi_1 \cap [\overline{M}_{g,1}(X, \beta)]^{\text{red}}\right) \\ &= \pi_*q'^*\alpha \\ &= \pi_*(\psi_1 \cap [\overline{M}_{g,1}(X, \beta)]^{\text{red}}). \end{aligned}$$

The Lemma now follows directly from the dilaton equation. \square

We define the *quotient Gromov-Witten invariants* of X by

$$(65) \quad \mathbf{N}_{g,\beta} = \int_{[\overline{M}_g(X,\beta)/X]^{\text{red}}} \mathbf{1}.$$

7.3. Reduced Gromov-Witten invariants. Let $g \geq 2$ and let β be a curve class of type (d_1, d_2, d_3) with $d_1, d_2 > 0$. Let

$$[\overline{M}_{g,n}(X, \beta)]^{\text{red}}$$

be the 3-reduced virtual class on the moduli space $\overline{M}_{g,n}(X, \beta)$ constructed in Section 1.4. The *reduced Gromov-Witten invariants* of X are defined by

$$(66) \quad \left\langle \tau_{a_1}(\gamma_1) \cdots \tau_{a_n}(\gamma_n) \right\rangle_{g,\beta}^{X,\text{red}} = \int_{[\overline{M}_{g,n}(X,\beta)]^{\text{red}}} \prod_{i=1}^n \text{ev}_i^*(\gamma_i) \cup \psi_i^{a_i},$$

for $\gamma_1, \dots, \gamma_n \in H^*(X, \mathbb{Q})$ and $a_1, \dots, a_n \geq 0$.

By the definition of the virtual class $[\overline{M}_g(X, \beta)/X]^{\text{red}}$ and the quotient Gromov-Witten invariants (65), we have

$$\mathbf{N}_{g,\beta} = \frac{1}{2g-2} \cdot \left\langle \tau_1(\mathbf{p}) \right\rangle_{g,\beta}^{X,\text{red}},$$

where $\mathbf{p} \in H^6(X, \mathbb{Z})$ is the class of a point. The invariants $\mathbf{N}_{g,\beta}$ will be shown to determine all reduced Gromov-Witten invariants (66) of X .

We first determine all primary Gromov-Witten invariants in terms of $\mathbf{N}_{g,\beta}$. Consider the translation action

$$(67) \quad t : X^{n+1} \rightarrow X, \quad (a, x_1, \dots, x_n) \mapsto (x_1 - a, \dots, x_n - a).$$

Lemma 18. For $\gamma_1, \dots, \gamma_n \in H^*(X, \mathbb{Q})$,

$$(68) \quad \left\langle \tau_0(\gamma_1) \dots \tau_0(\gamma_n) \right\rangle_{g,\beta}^{X,\text{red}} = \mathbf{N}_{g,\beta} \cdot \int_{t_*([X]^{\otimes \beta \otimes n})} \gamma_1 \otimes \dots \otimes \gamma_n.$$

Proof. Let $\gamma_1, \dots, \gamma_n \in H^*(X, \mathbb{Q})$ be homogeneous classes. We may assume the dimension constraint

$$\sum_{i=1}^n \deg(\gamma_i) = 2(3+n)$$

holds²³ – otherwise both sides of (68) vanish.

For every k , let

$$\pi_k : \overline{M}_{g,k}(X, \beta) \rightarrow \overline{M}_g(X)/X$$

be the composition of the map that forgets all markings with the quotient map. By Lemma 17,

$$[\overline{M}_{g,n}(X, \beta)]^{\text{red}} = \pi_n^*[\overline{M}_g(X, \beta)/X]^{\text{red}},$$

hence by the push-pull formula

$$\left\langle \tau_0(\gamma_1) \dots \tau_0(\gamma_n) \right\rangle_{g,\beta}^{X,\text{red}} = \int_{[\overline{M}_g(X,\beta)/X]^{\text{red}}} \pi_{n*} \left(\prod_i \text{ev}_i^*(\gamma_i) \right).$$

Since the map π_n is of relative dimension $3+n$, the cohomology class

$$\pi_{n*} \left(\prod_i \text{ev}_i^*(\gamma_i) \right)$$

has degree 0. To proceed, we evaluate $\prod_i \text{ev}_i^*(\gamma_i)$ on the fibers of π_n .

Let $f : C \rightarrow X$ be a stable map of genus g and class β , let

$$[f] \in \overline{M}_g(X, \beta)/X$$

be the associated point, and let F be the (stack) fiber of π_n over $[f]$.

By the definition of $\overline{M}_g(X, \beta)/X$ as a quotient stack [52], we may identify,

$$(69) \quad X = \pi_0^{-1}([f]),$$

where the induced map $X \rightarrow \overline{M}_g(X, \beta)$ is $x \mapsto (f - x)$. Here, (69) is the stack fiber.

²³Here, $\deg(\cdot)$ denotes the real degree of a class in X .

Under (69), let

$$b_0 : F \rightarrow X$$

be the map which forgets all markings. For $i \in \{1, \dots, n\}$, let

$$b_i : F \rightarrow C$$

be the map which forgets the map and all except the i -th marking. The induced map

$$b = (b_0, \dots, b_n) : F \rightarrow X \times C^n$$

is birational on components.

The evaluation map $\text{ev} : F \rightarrow X^n$ factors as

$$F \xrightarrow{b} X \times C^n \xrightarrow{(\text{id}, f, \dots, f)} X^{n+1} \xrightarrow{t} X^n,$$

where t is the translation map (67). We find

$$\begin{aligned} \int_F \text{ev}_1^*(\gamma_1) \cdots \text{ev}_n^*(\gamma_n) &= \int_{\text{ev}_*[F]} \gamma_1 \otimes \cdots \otimes \gamma_n \\ &= \int_{t_*(\text{id}, f^n)_*([X] \otimes [C]^{\otimes n})} \gamma_1 \otimes \cdots \otimes \gamma_n \\ &= \int_{t_*([X] \otimes \beta^{\otimes n})} \gamma_1 \otimes \cdots \otimes \gamma_n. \end{aligned}$$

Since this only depends on β and the γ_i , we conclude

$$\pi_{n*} \left(\prod_i \text{ev}_i^*(\gamma_i) \right) = \left(\int_{t_*([X] \otimes \beta^n)} \gamma_1 \otimes \cdots \otimes \gamma_n \right) \cdot \mathbf{1}.$$

The claim of the Lemma follows. \square

We state the abelian vanishing relation for abelian threefolds. Let

$$p : X^n \rightarrow X^{n-1}, \quad (x_1, \dots, x_n) \mapsto (x_2 - x_1, \dots, x_n - x_1).$$

Lemma 19. *Let $\gamma \in H^*(X^{n-1}, \mathbb{Q})$ and let $a_1, \dots, a_n \geq 0$. For any $\gamma_1 \in H^*(X, \mathbb{Q})$ of degree $\deg(\gamma_1) \leq 5$,*

$$\int_{[\overline{M}_{g,n}(X, \beta)]^{\text{red}}} \text{ev}_1^*(\gamma_1) \cup \text{ev}^* p^*(\gamma) \cup \prod_i \psi_i^{a_i} = 0.$$

The proof is identical to the proof of Lemma 4.

Proposition 7. *The full reduced descendent Gromov-Witten theory of X in genus g and class β is determined from $\mathbf{N}_{g, \beta}$ by the following operations:*

- (i) *the string, dilaton, and divisor equations,*
- (ii) *the abelian vanishing relation of Lemma 19,*

- (iii) the evaluation by Lemma 18 of primary invariants,
 (iv) the evaluation $\langle \tau_1(\mathbf{p}) \rangle_{g,\beta}^{X,\text{red}} = (2g - 2) \cdot \mathbf{N}_{g,\beta}$.

Proof. Let $\gamma_1, \dots, \gamma_n \in H^*(X, \mathbb{Q})$ be homogeneous classes. We must determine the Gromov-Witten invariant

$$(70) \quad \left\langle \tau_{a_1}(\gamma_1) \cdots \tau_{a_n}(\gamma_n) \right\rangle_{g,\beta}^{X,\text{red}}$$

for $a_1, \dots, a_n \geq 0$. We may assume the dimension constraint

$$(71) \quad \sum_{i=1}^n \deg(\gamma_i) + 2a_i = 2(3 + n),$$

where $\deg(\cdot)$ is the real degree of a class in X . In particular, $n \geq 1$.

We proceed by induction on n . In case $n = 1$, the insertion must be

$$\tau_1(\mathbf{p}), \tau_2(\gamma), \tau_3(\gamma'), \text{ or } \tau_4(\gamma'')$$

for classes $\gamma, \gamma', \gamma''$ of degrees 4, 2, 0 respectively. The case $\tau_1(\mathbf{p})$ follows from (iv). The cases $\tau_2(\gamma)$, $\tau_3(\gamma')$, and $\tau_4(\gamma'')$ all vanish by the abelian vanishing relation (ii).

Suppose $n > 1$ and assume the Proposition is true for all $n' < n$. If $a_i = 0$ for all i , the statement follows from the evaluation (iii). Hence we may assume $a_1 > 0$. If $\deg(\gamma_1) < 6$, we first apply the vanishing of Lemma 19 for γ_1 and

$$\gamma = \gamma_2 \otimes \cdots \otimes \gamma_n.$$

We find, that (70) can be expressed as a sum of series

$$\pm \left\langle \tau_{a_1}(\gamma_1 \cup \delta) \tau_{a_2}(\gamma'_2) \cdots \tau_{a_n}(\gamma'_n) \right\rangle_{g,\beta}^{X,\text{red}}$$

for homogeneous classes $\delta, \gamma'_2, \dots, \gamma'_n \in H^*(X, \mathbb{Q})$ with $\deg(\delta) \geq 1$. The above relation *increases* the degree of γ_1 . By induction on $\deg(\gamma_1)$, we may assume $\deg(\gamma_1) = 6$.

By the dimension constraint (71), we have

$$\sum_{i=2}^n \deg(\gamma_i) + 2a_i = 2(n - a_1),$$

hence there exists a $k \in \{2, \dots, n\}$, such that $\deg(\gamma_k) + 2a_k \leq 2$.

If $a_k = 1$, then $\deg(\gamma_k) = 0$ and we use the dilaton equation. If $a_k = 0$ and $\deg(\gamma_i) \in \{0, 1\}$, we use the string equation. If $a_k = 0$ and $\deg(\gamma_i) = 2$, we use the divisor equation. In each case, we reduce to Gromov-Witten invariants with less than n marked points. The proof of the Proposition now follows from the induction hypothesis. \square

In (14), we defined quotient invariants $\mathbf{N}_{g,(d_1,d_2)}^{\mathbf{Q}}$ counting genus g curves on an abelian surface A in class of type (d_1, d_2) , with $g \geq 2$ and $d_1, d_2 > 0$. By trading the FLS condition for insertions, moving the calculation to the threefold $A \times E$ via the $k = 2$ case of Section 1.5, and by the evaluation of Lemma 18, one obtains

$$\mathbf{N}_{g,(d_1,d_2)}^{\mathbf{Q}} = \mathbf{N}_{g,(d_1,d_2,0)}.$$

Hence, the quotient invariants of abelian surfaces agree with the degenerate case of the quotient invariants of abelian threefolds.

7.4. Genus 3 counts. We determine the genus 3 invariants of X using the lattice method of Section 1.3. The strategy is similar to the proof of Lemma 3.

Lemma 20. *For all $d_1, d_2, d_3 > 0$,*

$$\mathbf{N}_{3,(d_1,d_2,d_3)} = 2\nu(d_1, d_2, d_3).$$

Proof. Let β be a curve class of type (d_1, d_2, d_3) on a generic abelian threefold X . Since X is simple, every genus 3 stable map

$$f : C \rightarrow X$$

in class β has a nonsingular domain C , and induces a polarized isogeny $(\widehat{X}, \widehat{\beta}) \rightarrow (J, \theta)$.

Conversely, every simple principally polarized abelian threefold (B, θ) is the Jacobian of a unique nonsingular genus 3 curve C . Hence, each polarized isogeny $(\widehat{X}, \widehat{\beta}) \rightarrow (B, \theta)$ induces a map

$$f : C \xrightarrow{\text{aj}} B \rightarrow X.$$

However, for a generic abelian threefold X we have $\text{Aut}(C) = \{1\}$ and $\text{Aut}(X) = \{\pm 1\}$. The composition

$$f^- = (-1) \circ f : C \rightarrow X$$

is *not* translation equivalent to f and the given polarized isogeny corresponds to *two* genus 3 stable maps up to translation.²⁴

The argument in the proof of Lemma 3 also shows that X acts freely on $\overline{M}_3(X, \beta)$. The only point to verify is that given a nonsingular genus 3 curve C and the Abel-Jacobi map $\text{aj} : C \rightarrow J$, the only element in J fixing $\text{aj}(C)$ is 0_J . For this we consider the map

$$\text{Sym}^2(\text{aj}) : \text{Sym}^2(C) \rightarrow J.$$

²⁴This fact was overlooked in [33].

The image of $\text{Sym}^2(C)$ is a theta divisor, and is only fixed by $0_J \in J$. Then, if a point $a \in J$ fixes $\mathbf{aj}(C)$, it must also fix the image of $\text{Sym}^2(C)$ under $\text{Sym}^2(\mathbf{aj})$. Hence $a = 0_J$.

It follows that $\overline{M}_3(X, \beta)/X$ is a set of $2\nu(d_1, d_2, d_3)$ isolated reduced points. \square

By Lemma 3, Theorem 6, and Lemma 20,

$$(72) \quad \mathbf{N}_{3,(1,d,d')} = 2\mathbf{N}_{2,(d,d')}^{\mathbb{Q}} = 2 \sum_{k|\gcd(d,d')} \sum_{m|\frac{dd'}{k^2}} k^3 m.$$

The right hand side of (72) matches precisely the genus 3 predictions of Conjectures B and C.

Further, the lattice method can be adjusted to count diagonal curves in the $X = A \times E$ setting. Let A , E , and (β_d, d) be as in Section 6. Recall that an irreducible curve $C \subset X$ is diagonal if both projections $p_A : C \rightarrow A$ and $p_E : C \rightarrow E$ are of non-zero degree.

Lemma 21. *For even d , there are*

$$12\sigma\left(\frac{d}{2}\right) = 12 \sum_{k|\frac{d}{2}} k$$

isolated diagonal curves in class (β_2, d) up to translation. All diagonal curves are nonsingular of genus 3. The translation action of $A \times E$ on the diagonal curves is free.

Proof. Let C be a diagonal curve in class (β_2, d) . Since β_2 is irreducible, the projection $p_A : C \rightarrow A$ is generically injective. The image

$$C_0 = p_A(C) \subset A$$

is either a nonsingular genus 3 curve or a nodal genus 2 curve. We claim that the latter does not happen.

Suppose it does, and let $q : \tilde{C} \rightarrow C$ be the normalization map. Then $p_A \circ q : \tilde{C} \rightarrow A$ factors through an isogeny $J(\tilde{C}) \rightarrow A$, where $J(\tilde{C})$ is the Jacobian of the genus 2 curve \tilde{C} . We also know that $p_E \circ q : \tilde{C} \rightarrow E$ factors through $J(\tilde{C}) \rightarrow E$, which is surjective since $d > 0$. This contradicts the assumption that A is simple.

Hence, C_0 is nonsingular of genus 3 and so is C . As before, every such C induces a polarized isogeny

$$(\widehat{A \times E}, \widehat{(\beta_2, d)}) \rightarrow (J, \theta).$$

Conversely, every principally polarized abelian threefold (B, θ) is either

- the Jacobian of a unique nonsingular genus 3 curve, or
- the product of a principally polarized abelian surface and an elliptic curve, with the product polarization.

Given (β_2, d) of type $(1, 2, d)$, we know exactly which maximal totally isotropic subgroups of $\text{Ker}(\phi_{(\beta_2, d)}) \cong (\mathbb{Z}/2 \times \mathbb{Z}/d)^2$ correspond to polarized isogenies

$$(73) \quad (\widehat{A \times E}, \widehat{(\beta_2, d)}) \rightarrow (B, \theta)$$

to Jacobians (B, θ) . They are precisely the subgroups *not* of the form

$$G_1 \times G_2 \quad \text{with} \quad G_1 < (\mathbb{Z}/2)^2, \quad G_2 < (\mathbb{Z}/d)^2.$$

In particular, d must be even for these subgroups to exist. In terms of (7), there are the following two possibilities:

- (i) $K = \mathbb{Z}/2k$ for some $k | \frac{d}{2}$, generated by

$$\left(1, \frac{d}{2k}\right) \in \mathbb{Z}/2 \times \mathbb{Z}/d,$$

together with an arbitrary element in $\text{Hom}^{\text{sym}}(K, \widehat{K})$,

- (ii) $K = \mathbb{Z}/2 \times \mathbb{Z}/2k$ for some $k | \frac{d}{2}$, generated by

$$(1, 0), \left(0, \frac{d}{2k}\right) \in \mathbb{Z}/2 \times \mathbb{Z}/d,$$

together with a non-diagonal element in $\text{Hom}^{\text{sym}}(K, \widehat{K})$.

Summing up (i) and (ii), we find

$$\sum_{k | \frac{d}{2}} 2k + \sum_{k | \frac{d}{2}} 2 \cdot 2k = 6 \sum_{k | \frac{d}{2}} k$$

polarized isogenies to Jacobians. We claim that each of the isogenies corresponds to *two* diagonal curves up to translation.

We have seen that a diagonal curve $C \subset A \times E$ is isomorphic to its image $C_0 \subset A$. By [4, Section 10.8 (1)], every nonsingular genus 3 curve $C' \subset A$ in class β_2 admits a double cover to an elliptic curve E' . In particular, the Jacobian $J(C')$ is isogenous to $A \times E'$. Hence,

$$\mathbb{Z}/2 \subset \text{Aut}(C_0) = \text{Aut}(C).$$

On the other hand, we have generically $\text{Aut}(A \times E) = \mathbb{Z}/2 \times \mathbb{Z}/2$. Since the Jacobian J of C is isogenous to $A \times E$, we also have

$$\text{Aut}(J) \subset \mathbb{Z}/2 \times \mathbb{Z}/2.$$

A strong form of the Torelli theorem (see [4, Section 11.12 (19)]) says

$$\mathrm{Aut}(C) = \begin{cases} \mathrm{Aut}(J, \theta) & \text{if } C \text{ is hyperelliptic} \\ \mathrm{Aut}(J, \theta)/\{\pm 1\} & \text{if } C \text{ is not hyperelliptic.} \end{cases}$$

In our case this means

$$\mathrm{Aut}(C) = \begin{cases} \mathbb{Z}/2 \times \mathbb{Z}/2 & \text{if } C \text{ is hyperelliptic} \\ \mathbb{Z}/2 & \text{if } C \text{ is not hyperelliptic.} \end{cases}$$

To see that C is generically not hyperelliptic, recall from Section 5.3 that up to translation there are three²⁵ hyperelliptic genus 3 curves

$$C'_1, C'_2, C'_3 \subset A$$

in class β_2 with $\mathbb{Z}/2$ -stabilizers. For $i = 1, 2, 3$, the Jacobian $J(C'_i)$ is isogenous to $A \times E'_i$ for some E'_i . Hence, by taking E non-isogenous to E'_1, E'_2, E'_3 , we find that the diagonal curve $C \subset A \times E$ is not isomorphic to C'_1, C'_2, C'_3 .

To conclude, we have $\mathrm{Aut}(C) = \mathbb{Z}/2$ and $\mathrm{Aut}(J) = \mathrm{Aut}(A \times E) = \mathbb{Z}/2 \times \mathbb{Z}/2$. Therefore, each polarized isogeny (73) gives two diagonal curves up to translation. We find in total

$$2 \cdot 6 \sum_{k|\frac{d}{2}} k = 12 \sum_{k|\frac{d}{2}} k$$

diagonal curves up to translation. The proof that $A \times E$ acts freely is identical to the one given in the proof of Lemma 20. \square

7.5. Consistency check of Conjectures B and C. Conjecture C expresses the invariants $\mathbf{N}_{g,(1,d',d)}$ in terms of the invariants $\mathbf{N}_{g,(1,1,d)}$. By Conjecture B, we obtain a prediction for the Donaldson-Thomas invariants of type $(1, 2, d)$ in terms of those of $(1, 1, d)$. We show here that these predictions match the calculations of Theorem 5.

For $d \geq 0$, let $f_d(p), g_d(p) \in \mathbb{Q}((p))$ be the unique Laurent series with

$$(74) \quad \begin{aligned} \sum_{d \geq 0} f_d(p) q^d &= K(z, \tau)^2 \\ \sum_{d \geq 0} g_d(p) q^d &= \frac{3}{2} K(z, \tau)^4 \wp(z, \tau) + \frac{3}{8} K(2z, 2\tau)^2 \end{aligned}$$

under the variable change

$$p = e^{2\pi iz} \quad \text{and} \quad q = e^{2\pi i\tau}.$$

²⁵Each corresponds to a degree 2 polarized isogeny $(A, \beta_2) \rightarrow (B, \theta)$, with B the Jacobian of a genus 2 curve. The hyperelliptic curve is obtained by taking the preimage of the genus 2 curve.

The functions on the right hand side of (74) are exactly the negative of the functions appearing in Corollary* 5. The following Lemma shows that Corollary* 5 is consistent with Conjectures B and C.

Lemma 22. *We have*

$$g_d(p) = \begin{cases} f_{2d}(p) & \text{if } d \text{ is odd} \\ f_{2d}(p) + \frac{1}{2}f_{d/2}(p^2) & \text{if } d \text{ is even.} \end{cases}$$

Proof. We use basic results from the theory of Jacobi forms [15]. We will work with the actual variables $p = e^{2\pi iz}$ and $q = e^{2\pi i\tau}$, where $z \in \mathbb{C}$ and $\tau \in \mathbb{H}$.

Let $\varphi_{-2,1}(z, \tau)$ be the weight -2 , index 1 generator of the ring of weak Jacobi forms defined in [15, Section 9]. We have the basic identity

$$\varphi_{-2,1}(z, \tau) = K(z, \tau)^2,$$

see, for example, [12, Equation 4.29]. Applying the Hecke operator $|_{-2,1}V_2$ defined in [15, Section 4], we obtain the weak weight -2 , index 2 Jacobi form

$$(\varphi_{-2,1}|_{-2,1}V_2)(z, \tau) = \sum_{d \geq 0} \left(f_{2d}(p) + \frac{f_{d/2}(p^2)}{2^3} \right) q^d,$$

where $f_a(p) = 0$ whenever a is fractional. Using [15, Theorem 9.3] and comparing the first coefficients, we find

$$\sum_{d \geq 0} \left(f_{2d}(p) + \frac{f_{d/2}(p^2)}{2^3} \right) q^d = \frac{3}{2}K(z, \tau)^4 \wp(z, \tau).$$

We conclude

$$\begin{aligned} \sum_{d \geq 0} \left(f_{2d}(p) + \frac{f_{d/2}(p^2)}{2} \right) q^d &= \frac{3}{2}K(z, \tau)^4 \wp(z, \tau) + \sum_{d \geq 0} \frac{3}{8}f_{d/2}(p^2)q^d \\ &= \frac{3}{2}K(z, \tau)^4 \wp(z, \tau) + \frac{3}{8}K(2z, 2\tau)^2 \\ &= \sum_{d \geq 0} g_d(p)q^d. \quad \square \end{aligned}$$

REFERENCES

- [1] A. Beauville, *Counting rational curves on K3 surfaces*, Duke Math. J. **97** (1999), no. 1, 99–108.
- [2] K. Behrend, *The product formula for Gromov-Witten invariants*, J. Algebraic Geom. **8** (1999), no. 3, 529–541.
- [3] S. Bloch and A. Okounkov, *The character of the infinite wedge representation*, Adv. Math. **149** (2000), no. 1, 1–60.
- [4] C. Birkenhake and H. Lange, *Complex abelian varieties*, Second edition, Grundlehren Math. Wiss., **302**, Springer-Verlag, Berlin, 2004, xii+635 pp.

- [5] J. Bryan, *The Donaldson-Thomas theory of $K3 \times E$ via the topological vertex*, arXiv:1504.02920.
- [6] J. Bryan and T. Graber, *The crepant resolution conjecture*, in *Algebraic geometry—Seattle 2005*, Part 1, 23–42, Proc. Sympos. Pure Math., **80**, Part 1, Amer. Math. Soc., Providence, RI, 2009.
- [7] J. Bryan and M. Kool, in preparation.
- [8] J. Bryan and N. C. Leung, *Generating functions for the number of curves on abelian surfaces*, Duke Math. J. **99** (1999), no. 2, 311–328.
- [9] J. Bryan and N. C. Leung, *The enumerative geometry of $K3$ surfaces and modular forms*, J. Amer. Math. Soc. **13** (2000), no. 2, 371–410.
- [10] L. M. Butler, *Subgroup lattices and symmetric functions*, Mem. Amer. Math. Soc. **112** (1994), no. 539, vi+160 pp.
- [11] K. Chandrasekharan, *Elliptic functions*, Grundlehren Math. Wiss., **281**. Springer-Verlag, Berlin, 1985, xi+189 pp.
- [12] A. Dabholkar, S. Murthy, and D. Zagier, *Quantum black holes, wall crossing, and mock modular forms*, arXiv:1208.4074.
- [13] O. Debarre, *On the Euler characteristic of generalized Kummer varieties*, Amer. J. Math. **121** (1999), no. 3, 577–586.
- [14] O. Debarre, *Complex tori and abelian varieties*, SMF/AMS Texts and Monographs, **11**, Amer. Math. Soc., Providence, RI; Soc. Math. France, Paris, 2005, x+109 pp.
- [15] M. Eichler and D. Zagier, *The theory of Jacobi forms*, Progress in Mathematics, **55**, Birkhäuser Boston, Inc., Boston, MA, 1985, v+148 pp.
- [16] C. Faber and R. Pandharipande, *Hodge integrals and Gromov-Witten theory*, Invent. Math. **139** (2000), no. 1, 173–199.
- [17] C. Faber and R. Pandharipande, *Relative maps and tautological classes*, J. Eur. Math. Soc. (JEMS) **7** (2005), no. 1, 13–49.
- [18] C. Faber and R. Pandharipande, *Tautological and non-tautological cohomology of the moduli space of curves*, in *Handbook of moduli*, Vol. I, 293–330, Adv. Lect. Math. (ALM), **24**, Int. Press, Somerville, MA, 2013.
- [19] F. Flamini, A. L. Knutsen, G. Pacienza, *On families of rational curves in the Hilbert square of a surface*, with an appendix by E. Sernesi, Michigan Math. J. **58** (2009), no. 3, 639–682.
- [20] L. Göttsche, *The Betti numbers of the Hilbert scheme of points on a smooth projective surface*, Math. Ann. **286** (1990), no. 1-3, 193–207.
- [21] L. Göttsche, *A conjectural generating function for numbers of curves on surfaces*, Comm. Math. Phys. **196** (1998), no. 3, 523–533.
- [22] L. Göttsche and V. Shende, *The chi-y genera of relative Hilbert schemes for linear systems on Abelian and $K3$ surfaces*, Algebr. Geom. **2** (2015), no. 4, 405–421.
- [23] T. Graber, *Enumerative geometry of hyperelliptic plane curves*, J. Algebraic Geom. **10** (2001), no. 4, 725–755.
- [24] T. Graber and R. Pandharipande, *Localization of virtual classes*, Invent. Math. **135** (1999), no. 2, 487–518.
- [25] M. G. Gulbrandsen, *Donaldson-Thomas invariants for complexes on abelian threefolds*, Math. Z. **273** (2013), no. 1-2, 219–236.
- [26] J. Harris and D. Mumford, *On the Kodaira dimension of the moduli space of curves*, with an appendix by W. Fulton, Invent. Math. **67** (1982), no. 1, 23–88.
- [27] T. Kawai and K. Yoshioka, *String partition functions and infinite products*, Adv. Theor. Math. Phys. **4** (2000), no. 2, 397–485.
- [28] Y.-H. Kiem and J. Li, *Localizing virtual cycles by cosections*, J. Amer. Math. Soc. **26** (2013), no. 4, 1025–1050.

- [29] A. Klemm, D. Maulik, R. Pandharipande, and E. Scheidegger, *Noether-Lefschetz theory and the Yau-Zaslow conjecture*, J. Amer. Math. Soc. **23** (2010), no. 4, 1013–1040.
- [30] A. L. Knutsen, M. Lelli-Chiesa, and G. Mongardi, *Severi varieties and Brill-Noether theory of curves on abelian surfaces*, arXiv:1503.04465.
- [31] M. Kool and R. P. Thomas, *Reduced classes and curve counting on surfaces I: theory*, Algebr. Geom. **1** (2014), no. 3, 334–383.
- [32] H. Lange and E. Sernesi, *Severi varieties and branch curves of abelian surfaces of type (1, 3)*, Internat. J. Math. **13** (2002), no. 3, 227–244.
- [33] H. Lange and E. Sernesi, *Curves of genus g on an abelian variety of dimension g* , Indag. Math. (N.S.) **13** (2002), no. 4, 523–535.
- [34] J. Li, *Stable morphisms to singular schemes and relative stable morphisms*, J. Differential Geom. **57** (2001), no. 3, 509–578.
- [35] J. Li, *A degeneration formula for Gromov-Witten invariants*, J. Differential Geom. **60** (2002), no. 2, 199–293.
- [36] E. Looijenga, *On the tautological ring of M_g* , Invent. Math. **121** (1995), no. 2, 411–419.
- [37] D. Maulik, N. Nekrasov, A. Okounkov, and R. Pandharipande, *Gromov-Witten theory and Donaldson-Thomas theory. I*, Compos. Math., **142** (2006), no. 5, 1263–1285.
- [38] D. Maulik and R. Pandharipande, *A topological view of Gromov-Witten theory*, Topology **45** (2006), no. 5, 887–918.
- [39] D. Maulik and R. Pandharipande, *Gromov-Witten theory and Noether-Lefschetz theory*, in *A celebration of algebraic geometry*, 469–507, Clay Math. Proc., **18**, Amer. Math. Soc., Providence, RI, 2013.
- [40] D. Maulik, R. Pandharipande, and R. P. Thomas, *Curves on K3 surfaces and modular forms*, with an appendix by A. Pixton, J. Topol. **3** (2010), no. 4, 937–996.
- [41] G. Oberdieck, *Gromov-Witten invariants of the Hilbert scheme of points of a K3 surface*, arXiv:1406.1139.
- [42] G. Oberdieck and R. Pandharipande, *Curve counting on $K3 \times E$, the Igusa cusp form χ_{10} , and descendent integration*, arXiv:1411.1514.
- [43] A. Okounkov and R. Pandharipande, *Gromov-Witten theory, Hurwitz theory, and completed cycles*, Ann. of Math. (2) **163** (2006), no. 2, 517–560.
- [44] A. Okounkov and R. Pandharipande, *Virasoro constraints for target curves*, Invent. Math. **163** (2006), no. 1, 47–108.
- [45] R. Pandharipande and A. Pixton, *Gromov-Witten/Pairs correspondence for the quintic 3-fold*, arXiv:1206.5490.
- [46] R. Pandharipande and R. P. Thomas, *Curve counting via stable pairs in the derived category*, Invent. Math. **178** (2009), no. 2, 407–447.
- [47] R. Pandharipande and R. P. Thomas, *The Katz-Klemm-Vafa conjecture for K3 surfaces*, arXiv:1404.6698.
- [48] R. Pandharipande and R. P. Thomas, *13/2 ways of counting curves*, in *Moduli spaces*, 282–333, London Math. Soc. Lecture Note Ser., **411**, Cambridge Univ. Press, Cambridge, 2014.
- [49] G. P. Pirola, *Curves on generic Kummer varieties*, Duke Math. J. **59** (1989), no. 3, 701–708.
- [50] D. Pontoni, *Quantum cohomology of $\text{Hilb}^2(\mathbb{P}^1 \times \mathbb{P}^1)$ and enumerative applications*, Trans. Amer. Math. Soc. **359** (2007), no. 11, 5419–5448.
- [51] B. Poonen and M. Stoll, *Most odd degree hyperelliptic curves have only one rational point*, Ann. of Math. (2) **180** (2014), no. 3, 1137–1166.

- [52] M. Romagny, *Group actions on stacks and applications*, Michigan Math. J. **53** (2005), no. 1, 209–236.
- [53] S. C. F. Rose, *Counting hyperelliptic curves on an Abelian surface with quasi-modular forms*, Commun. Number Theory Phys. **8** (2014), no. 2, 243–293.
- [54] Y. Ruan, *The cohomology ring of crepant resolutions of orbifolds*, in *Gromov-Witten theory of spin curves and orbifolds*, 117–126, Contemp. Math., **403**, Amer. Math. Soc., Providence, RI, 2006.
- [55] T. Schürg, B. Toën, and G. Vezzosi, *Derived algebraic geometry, determinants of perfect complexes, and applications to obstruction theories for maps and complexes*, J. Reine Angew. Math. **702** (2015), 1–40.
- [56] J. Shen, *The Euler characteristics of generalized Kummer schemes*, arXiv:1502.03973.
- [57] J. Tate, *Algebraic cycles and poles of zeta functions*, in *Arithmetical algebraic geometry*, (Proc. Conf. Purdue Univ., 1963), 93–110, Harper & Row, New York, 1965.
- [58] J. Wise, *A hyperelliptic Hodge integral*, arXiv:0807.3964.
- [59] J. Wise, *The genus zero Gromov-Witten invariants of the symmetric square of the plane*, Comm. Anal. Geom. **19** (2011), no. 5, 923–974.
- [60] S.-T. Yau and E. Zaslow, *BPS states, string duality, and nodal curves on K3*, Nuclear Phys. B **471** (1996), no. 3, 503–512.

UNIVERSITY OF BRITISH COLUMBIA, DEPARTMENT OF MATHEMATICS

E-mail address: `jbryan@math.ubc.ca`

ETH ZÜRICH, DEPARTMENT OF MATHEMATICS

E-mail address: `georgo@math.ethz.ch`

ETH ZÜRICH, DEPARTMENT OF MATHEMATICS

E-mail address: `rahul@math.ethz.ch`

ETH ZÜRICH, DEPARTMENT OF MATHEMATICS

E-mail address: `yin@math.ethz.ch`